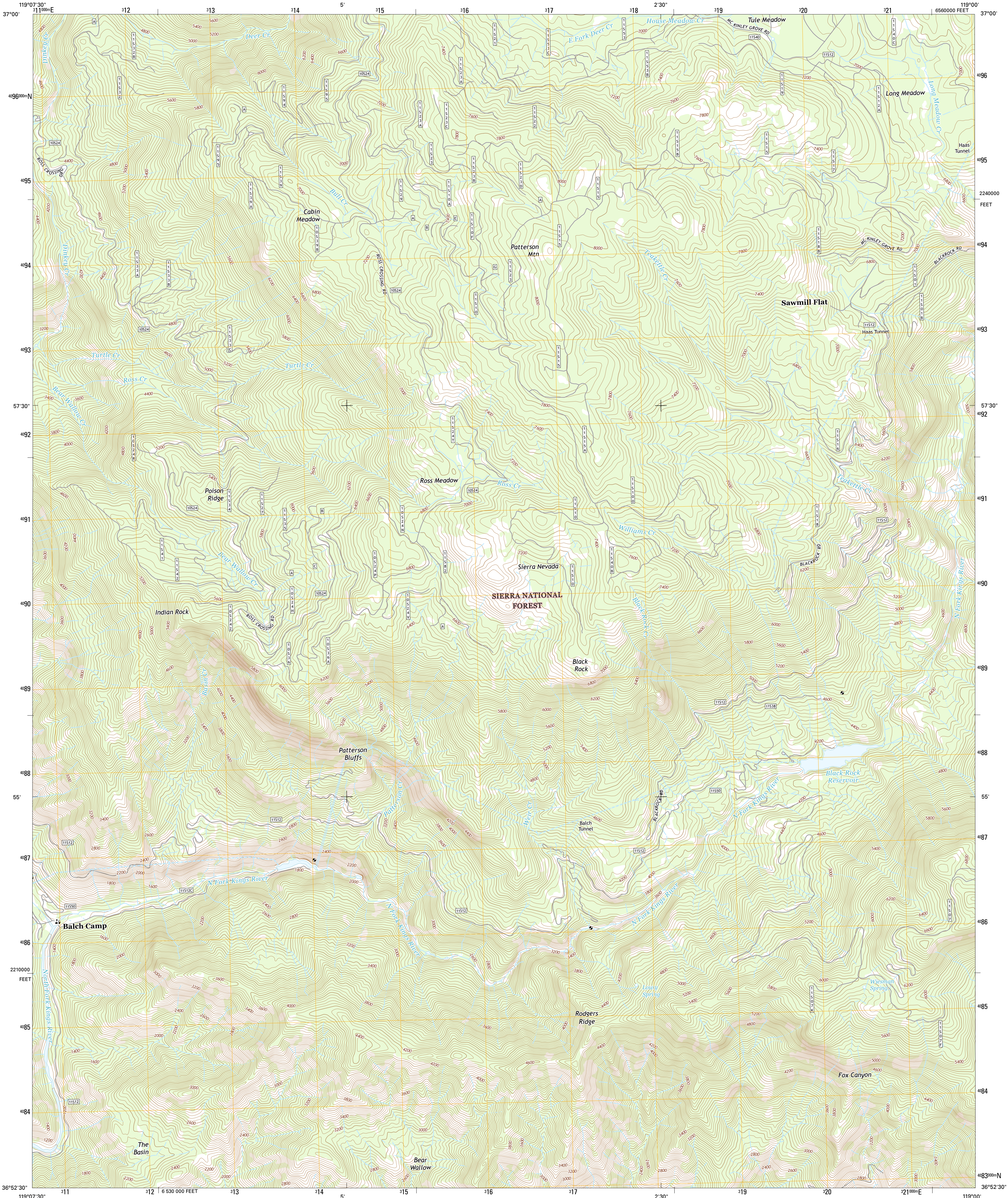




U.S. DEPARTMENT OF THE INTERIOR  
U.S. GEOLOGICAL SURVEY



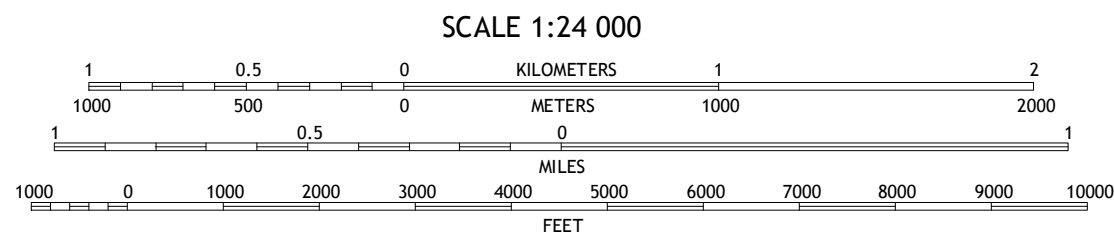
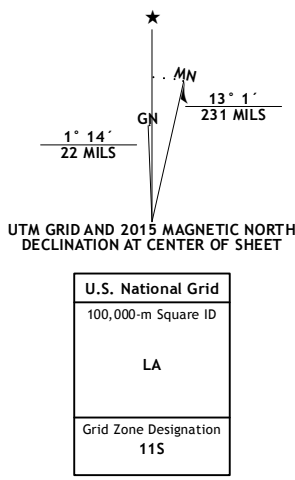
PATTERSON MOUNTAIN QUADRANGLE  
CALIFORNIA-FRESNO CO.  
7.5-MINUTE SERIES



Produced by the United States Geological Survey  
North American Datum of 1983 (NAD83)  
World Geodetic System of 1984 (WGS84) Projection and  
1 000-meter grid; Universal Transverse Mercator, Zone 11S  
10 000-foot ticks: California Coordinate System of 1983 (zone 4)

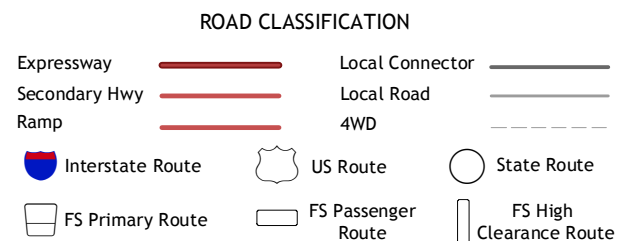
This map is not a legal document. Boundaries may be  
generalized for this map scale. Private lands within government  
reservations may not be shown. Obtain permission before  
entering private lands.

Imagery.....NAIP, June 2012  
Roads.....HERE, ©2013 - 2014  
Roads within US Forest Service Lands.....FSTopo Data  
with limited Forest Service updates, 2012 - 2015  
Names.....GNIS, 2015  
Hydrography.....National Hydrography Dataset, 2012  
Contours.....National Elevation Dataset, 1999  
Boundaries.....Multiple sources; see metadata file 1972 - 2015  
Public Land Survey System.....BLM, 2011



CONTOUR INTERVAL 40 FEET  
NORTH AMERICAN VERTICAL DATUM OF 1988

This map was produced to conform with the  
National Geospatial Program US Topo Product Standard, 2011.  
A metadata file associated with this product is draft version 0.6.18



Check with local Forest Service unit  
for current travel conditions and restrictions.

1	2	3	1 Dinky Creek
			2 Nelson Mountain
4		5	3 Courtright Reservoir
			4 Sacate Ridge
6	7	8	5 Rough Spur
			6 Luckett Mountain
			7 Verplank Ridge
			8 Hume

ADJOINING QUADRANGLES

PATTERSON MOUNTAIN, CA  
2015

