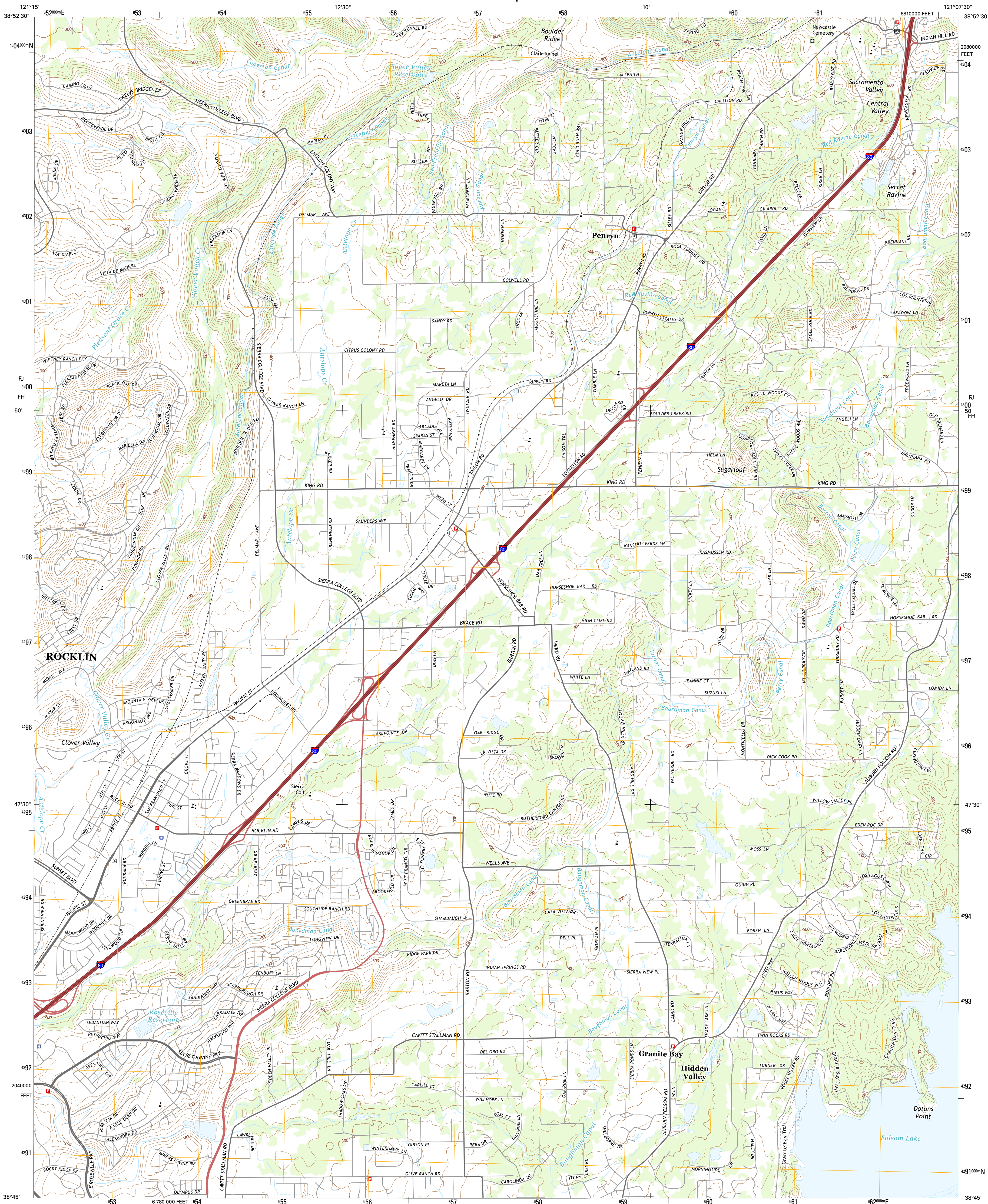




U.S. DEPARTMENT OF THE INTERIOR  
U.S. GEOLOGICAL SURVEY



ROCKLIN QUADRANGLE  
CALIFORNIA-PLACER CO.  
7.5-MINUTE SERIES



Produced by the United States Geological Survey  
North American Datum of 1983 (NAD83)  
World Geodetic System of 1984 (WGS84). Projection and  
1000-meter grid: Universal Transverse Mercator, Zone 10S  
10 000-foot ticks: California Coordinate System of 1983 (zone 2)

This map is not a legal document. Boundaries may be  
generalized for this map scale. Private lands within government  
reservations may not be shown. Obtain permission before  
entering private lands.

Imagery.....NAIP, July 2012  
Roads.....HERE, ©2013 - 2014  
Names.....GNIS, 2015  
Hydrography.....National Hydrography Dataset, 2012  
Contours.....National Elevation Dataset, 2003  
Boundaries.....Multiple sources; see metadata file 1972 - 2015  
Public Land Survey System.....BLM, 2011

UTM GRID AND 2015 MAGNETIC NORTH  
DECLINATION AT CENTER OF SHEET

U.S. National Grid  
100,000-m Square ID  
FJ 12 49  
FH 100  
Grid Zone Designation  
10S

SCALE 1:24 000  
1 0.5 0 1 2  
1000 500 0 1000 2000  
KILOMETERS  
1 0.5 0 1000 2000  
METERS  
1 0 1000 2000 3000 4000 5000 6000 7000 8000 9000 10000  
MILES  
FEET

CONTOUR INTERVAL 20 FEET  
NORTH AMERICAN VERTICAL DATUM OF 1988  
This map was produced to conform with the  
National Geospatial Program US Topo Product Standard, 2011.  
A metadata file associated with this product is draft version 0.6.18



ADJOINING QUADRANGLES

1	2	3
4	5	6
7	8	

1 Lincoln  
2 Gold Hill  
3 Auburn  
4 Roseville  
5 Pilot Hill  
6 Citrus Heights  
7 Folsom  
8 Clarksville

ROAD CLASSIFICATION

Expressway	Local Connector
Secondary Hwy	Local Road
Ramp	4WD
Interstate Route	US Route
	State Route

ROCKLIN, CA  
2015

