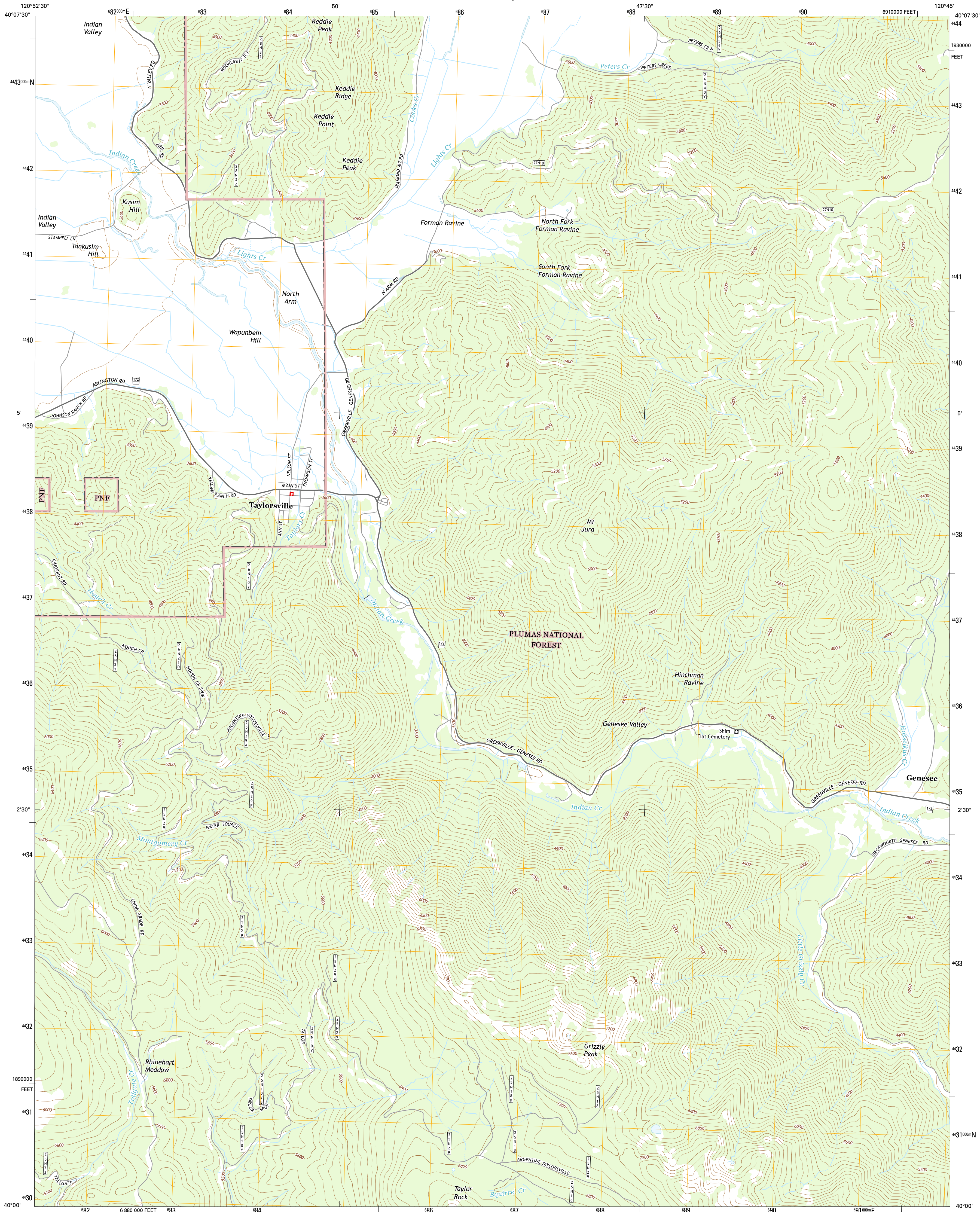




U.S. DEPARTMENT OF THE INTERIOR
U.S. GEOLOGICAL SURVEY



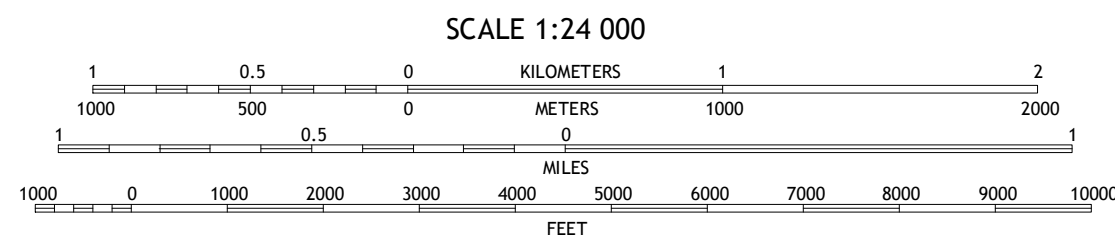
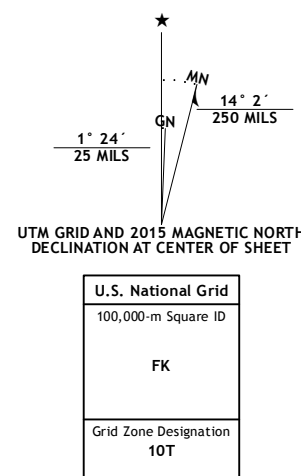
TAYLORSVILLE QUADRANGLE
CALIFORNIA-PLUMAS CO.
7.5-MINUTE SERIES



Produced by the United States Geological Survey
North American Datum of 1983 (NAD83)
World Geodetic System of 1984 (WGS84). Projection and
1000-meter grid: Universal Transverse Mercator, Zone 10T
10 000-foot ticks: California Coordinate System of 1983 (zone 1)

This map is not a legal document. Boundaries may be
generalized for this map scale. Private lands within government
reservations may not be shown. Obtain permission before
entering private lands.

Imagery.....NAIP, June 2012
Roads.....HERE, ©2013 - 2014
Roads within US Forest Service Lands.....FS Topo Data
with limited Forest Service updates, 2012 - 2015
Names.....National Hydrography Dataset, 2012
Hydrography.....National Elevation Dataset, 1999
Contours.....Multiple sources; see metadata file 1972 - 2015
Boundaries.....BLM, 2011

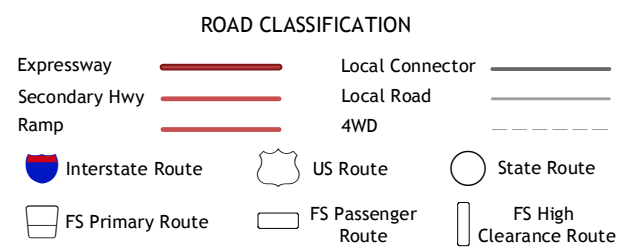


CONTOUR INTERVAL 80 FEET
NORTH AMERICAN VERTICAL DATUM OF 1988
This map was produced to conform with the
National Geospatial Program US Topo Product Standard, 2011.
A metadata file associated with this product is draft version 0.6.18



1	2	3
4	5	6
7	8	9

1 Greenville
2 Moonlight Peak
3 Kettle Rock
4 Crescent Mills
5 Genesee Valley
6 Quincy
7 Spring Garden
8 Mount Ingalls



Check with local Forest Service unit
for current travel conditions and restrictions.

TAYLORSVILLE, CA
2015

