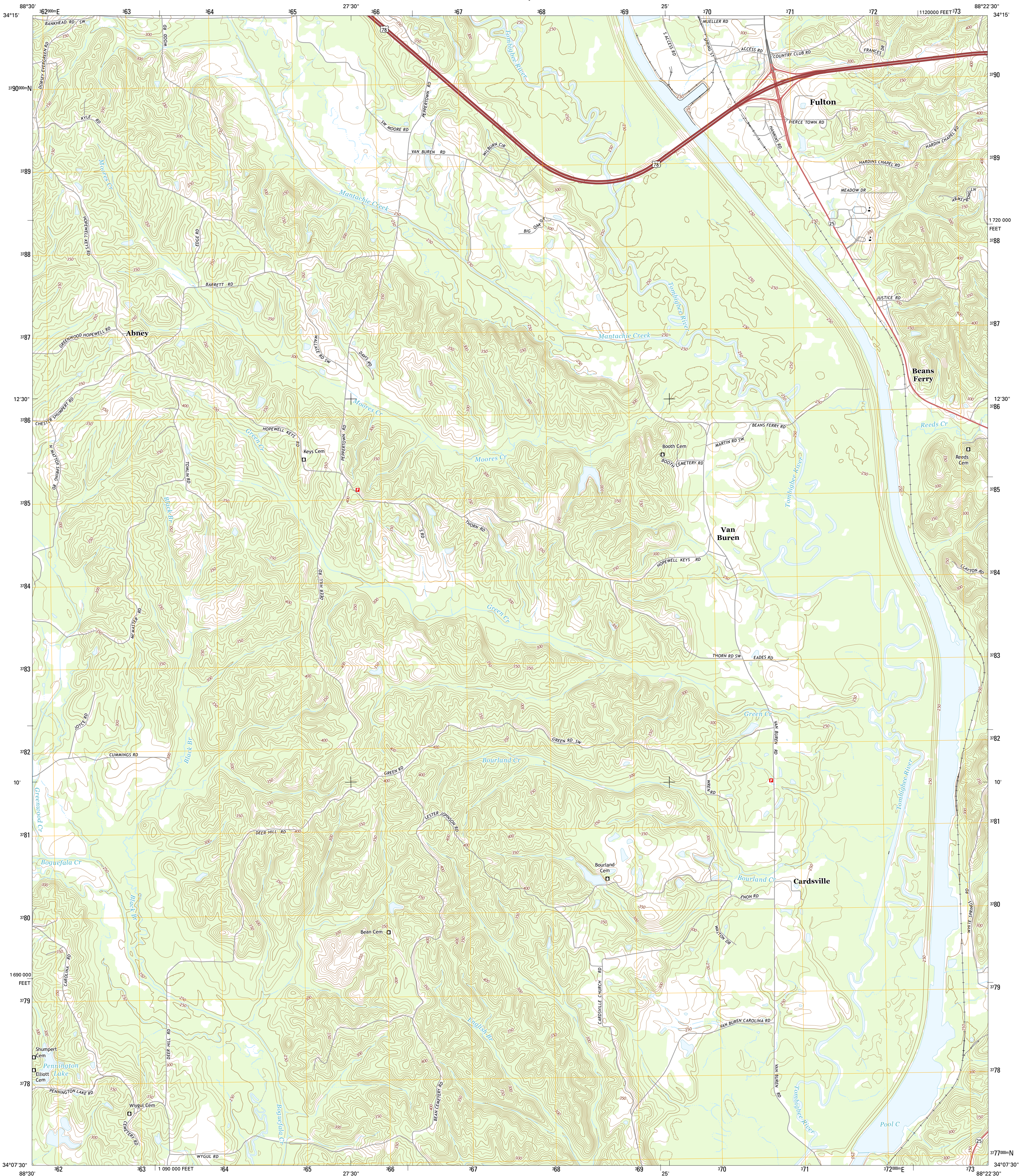




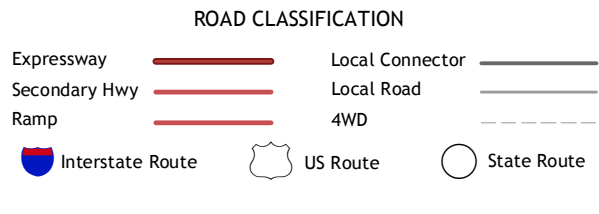
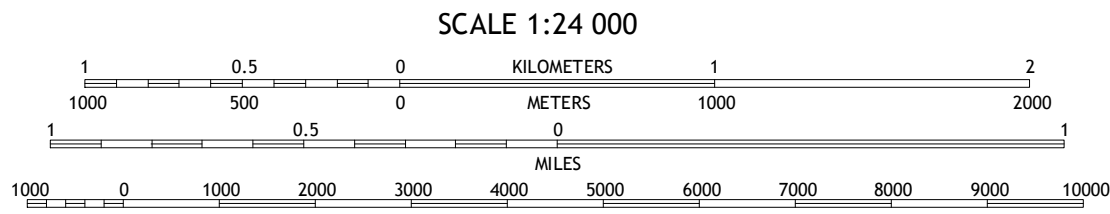
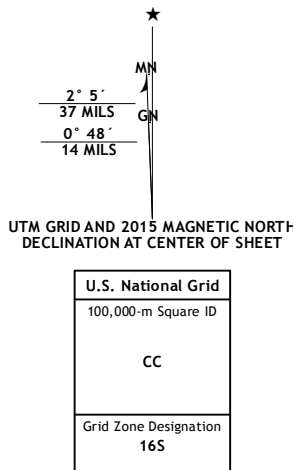
U.S. DEPARTMENT OF THE INTERIOR  
U.S. GEOLOGICAL SURVEY



BEANS FERRY QUADRANGLE  
MISSISSIPPI-ITAWAMBA CO.  
7.5-MINUTE SERIES



**Produced by the United States Geological Survey**  
North American Datum of 1983 (NAD83)  
World Geodetic System of 1984 (WGS84), Projection and  
1 000-meter grid; Universal Transverse Mercator, Zone 16S  
10 000-foot ticks; Mississippi Coordinate System of 1983 (east  
zone)  
  
This map is not a legal document. Boundaries may be  
generalized for this map scale. Private lands within government  
reservations may not be shown. Obtain permission before  
entering private lands.  
  
Imagery.....NAIP, July 2014  
Roads.....HERE, ©2013 - 2014  
Names.....GNIS, 2015  
Hydrography.....National Hydrography Dataset, 2014  
Contours.....National Elevation Dataset, 2008  
Boundaries.....Multiple sources; see metadata file 1972 - 2015  
Public Land Survey System.....BLM, 2015



1	2	3
4	5	6
7	8	9

ADJOINING QUADRANGLES

1 Mooreville  
2 Fulton  
3 Fulton SE  
4 Evergreen  
5 Tremont  
6 Nettleton  
7 Smithville  
8 Turon

BEANS FERRY, MS  
2015

