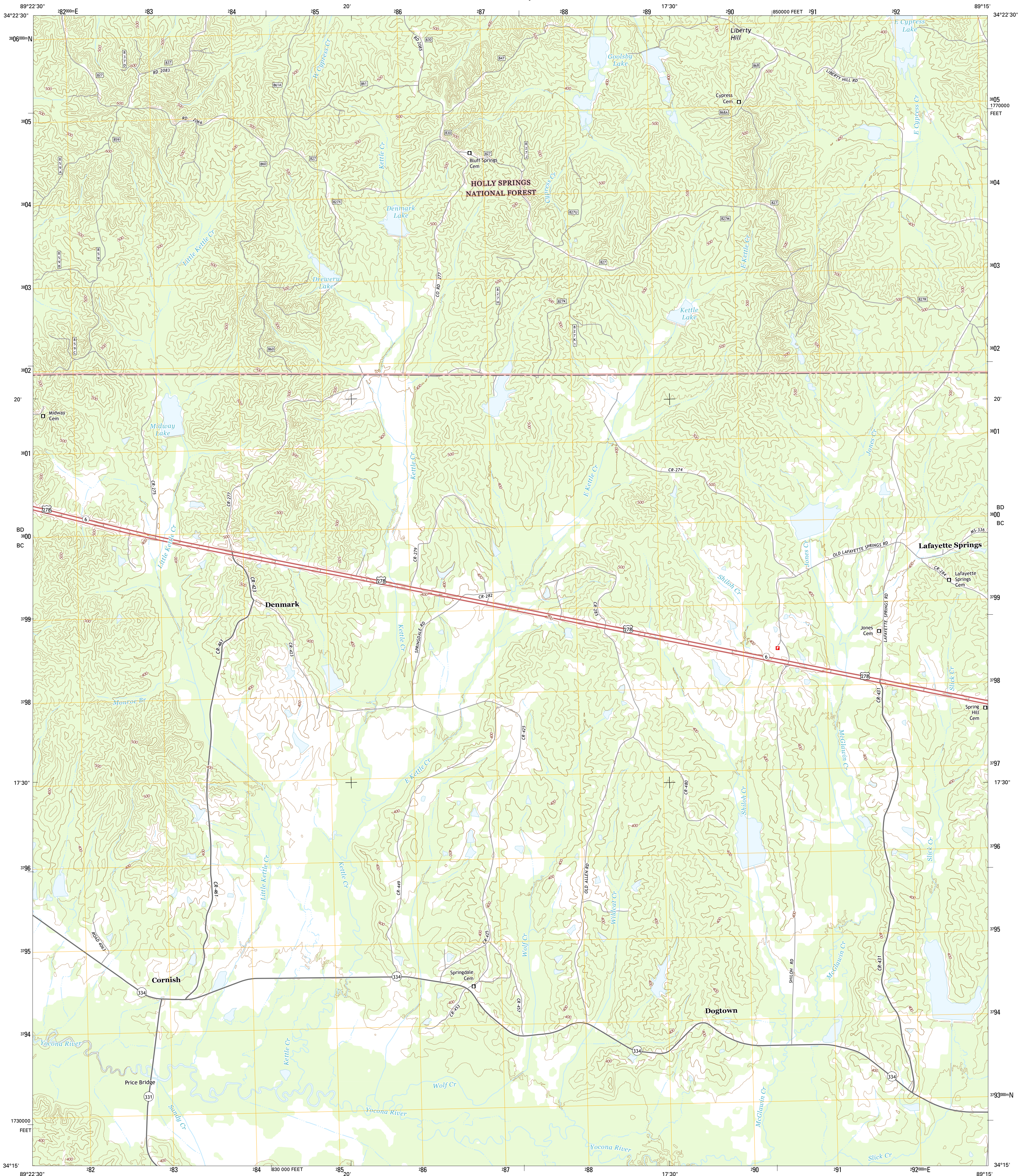




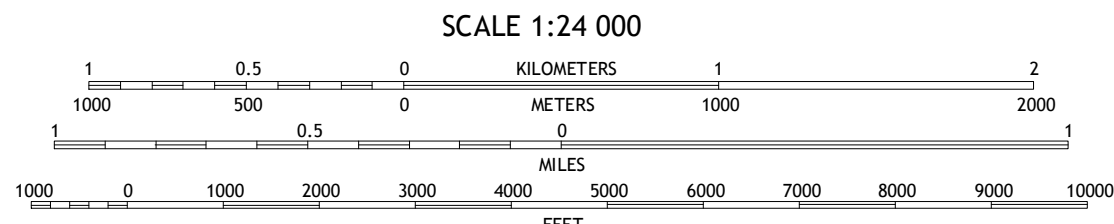
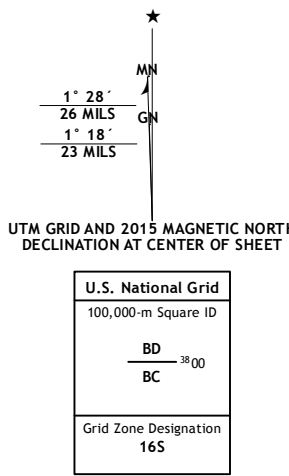
U.S. DEPARTMENT OF THE INTERIOR
U.S. GEOLOGICAL SURVEY



DENMARK QUADRANGLE
MISSISSIPPI-LAFAYETTE CO.
7.5-MINUTE SERIES



Produced by the United States Geological Survey
North American Datum of 1983 (NAD83)
World Geodetic System of 1984 (WGS84). Projection and
1 000-meter grid: Universal Transverse Mercator, Zone 16S
10 000-foot ticks: Mississippi Coordinate System of 1983 (east
zone)
This map is not a legal document. Boundaries may be
generalized for this map scale. Private lands within government
reservations may not be shown. Obtain permission before
entering private lands.
Imagery.....NAIP, July 2014
Roads.....HERE, ©2013 - 2014
Data within US Forest Service Lands.....FSTopo
Data with limited Forest Service updates, 2012 - 2015
Names.....GNIS, 2015
Hydrography.....National Hydrography Dataset, 2014
Contours.....National Elevation Dataset, 2013
Boundaries.....Multiple sources; see metadata file 1972 - 2015
Public Land Survey System.....BLM, 2015



CONTOUR INTERVAL 20 FEET
NORTH AMERICAN VERTICAL DATUM OF 1988
This map was produced to conform with the
National Geospatial Program US Topo Product Standard, 2011.
A metadata file associated with this product is draft version 0.6.18



ROAD CLASSIFICATION
Expressway
Secondary Hwy
Ramp
Interstate Route
US Route
FS Primary Route
Local Connector
Local Road
4WD
State Route
FS Passenger Route
FS High
Clearance Route
Check with local Forest Service unit
for current travel conditions and restrictions.

1	2	3
4	5	6
7	8	9

1 Bagley Lake
2 Puskus Lake
3 Etta
4 Yocona
5 Thaxton
6 Paris
7 Tula
8 Randolph

DENMARK, MS
2015

