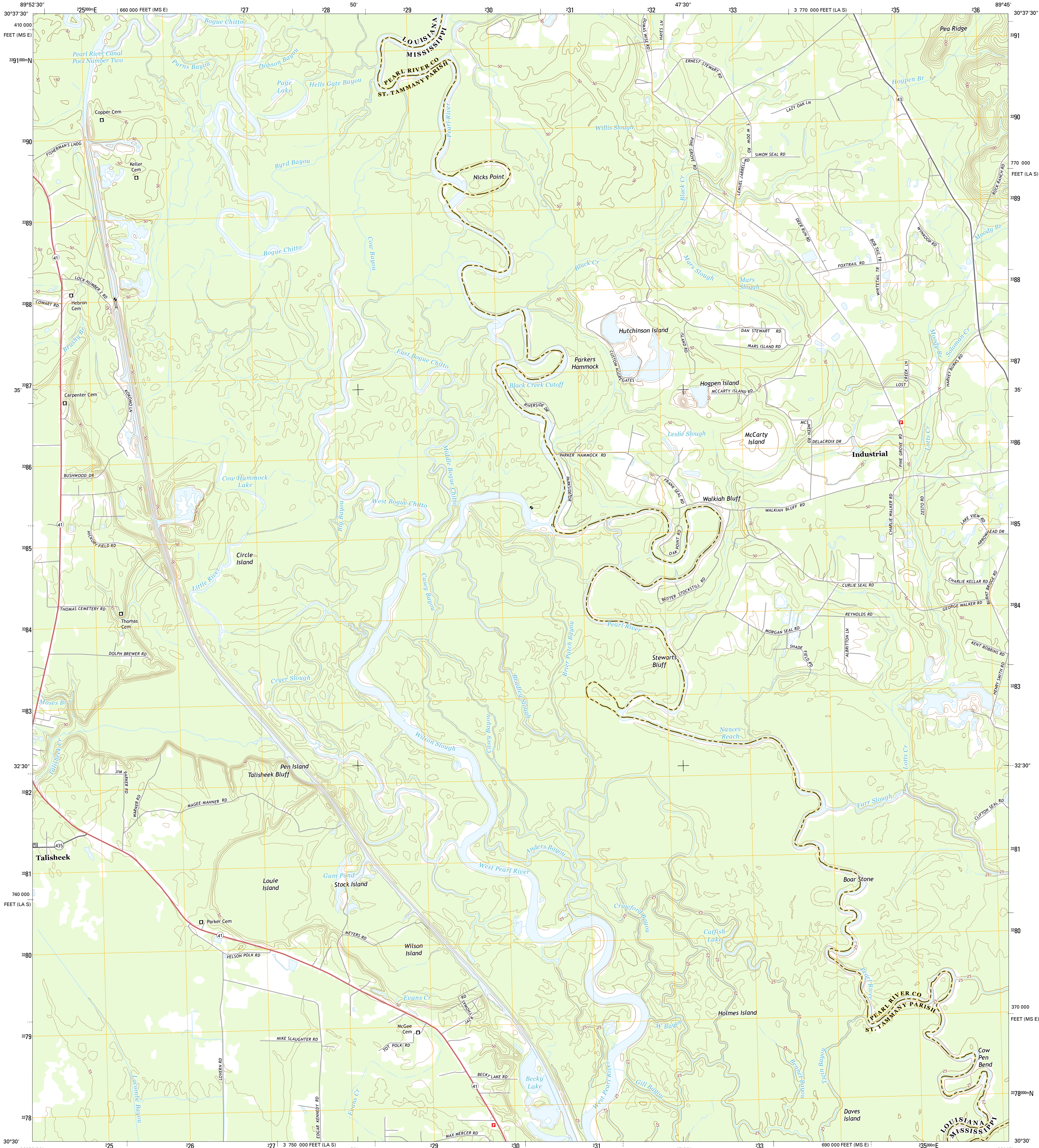




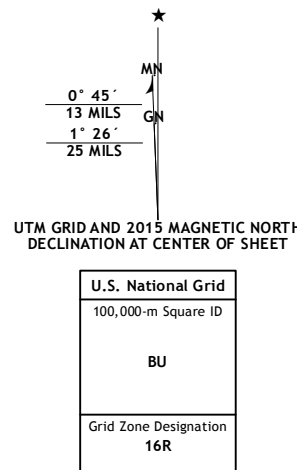
U.S. DEPARTMENT OF THE INTERIOR
U.S. GEOLOGICAL SURVEY



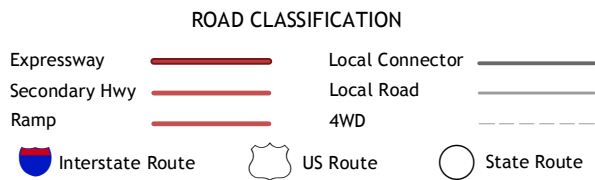
INDUSTRIAL QUADRANGLE
MISSISSIPPI-LOUISIANA
7.5-MINUTE SERIES



Produced by the United States Geological Survey
North American Datum of 1983 (NAD83)
World Geodetic System of 1984 (WGS84), Projection and
1000-meter grid: Universal Transverse Mercator, Zone 16R
10 000-foot ticks: Louisiana Coordinate System of 1983 (south zone), Mississippi Coordinate System of 1983 (east zone)
This map is not a legal document. Boundaries may be generalized for this map scale. Private lands within government reservations may not be shown. Obtain permission before entering private lands.
Imagery: NAIP, August 2013
Roads: HERE, ©2013 - 2014
Names: GNIS, 2015
Hydrography: National Hydrography Dataset, 2013
Contours: National Elevation Dataset, 2008
Boundaries: Multiple sources; see metadata file 1972 - 2015
Public Land Survey System: BLM, 2015



CONTOUR INTERVAL 5 FEET
NORTH AMERICAN VERTICAL DATUM OF 1988
This map was produced to conform with the National Geospatial Program US Topo Product Standard, 2011. A metadata file associated with this product is draft version 0.6.18



1	2	3
4	5	6
7	8	9

ADJOINING QUADRANGLES

1 Sun
2 Henleyfield
3 McNeill
4 Bush
5 Picayune
6 Saint Tammany
7 Hickory
8 Nicholson

INDUSTRIAL, MS-LA
2015

