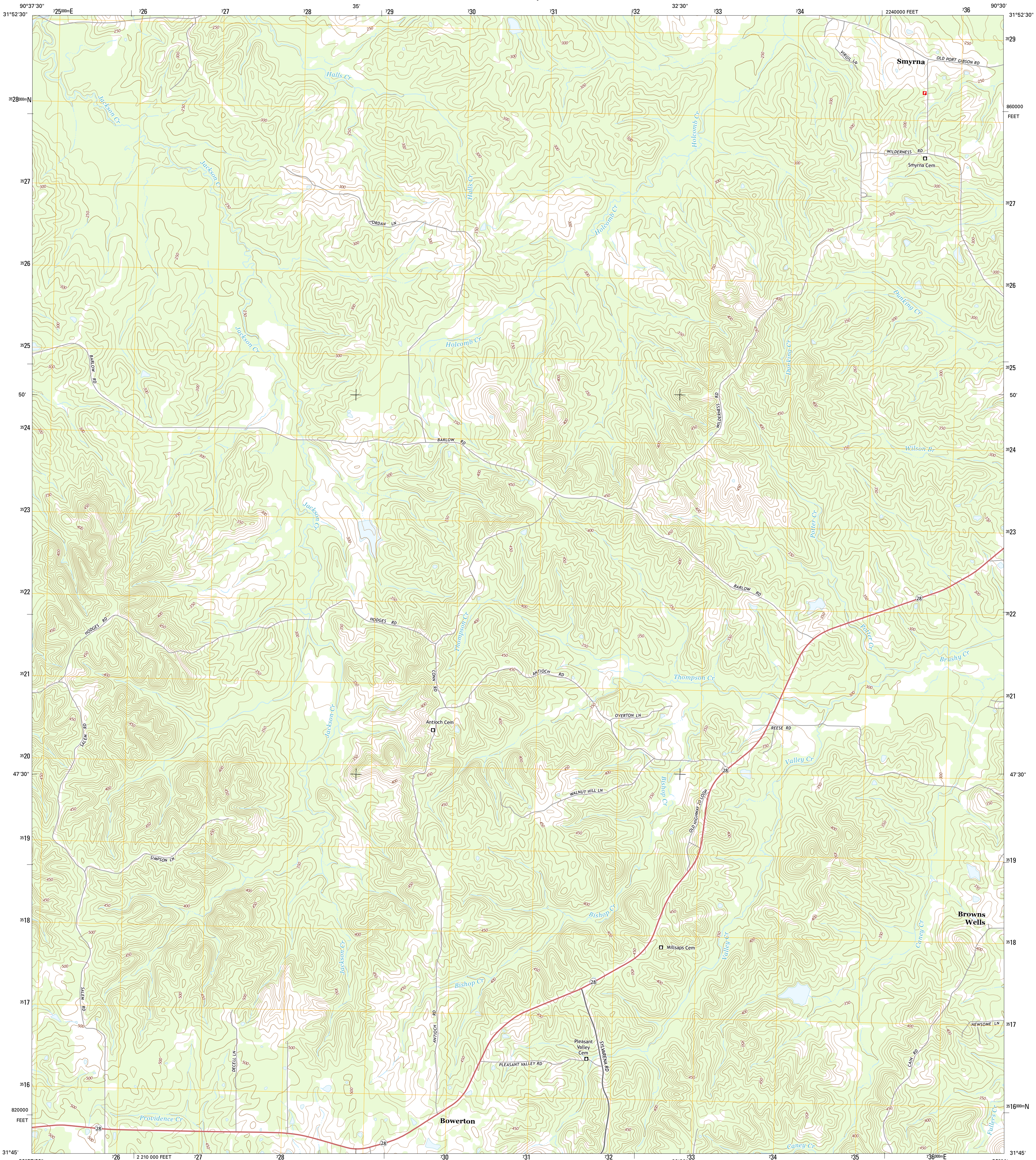




U.S. DEPARTMENT OF THE INTERIOR  
U.S. GEOLOGICAL SURVEY



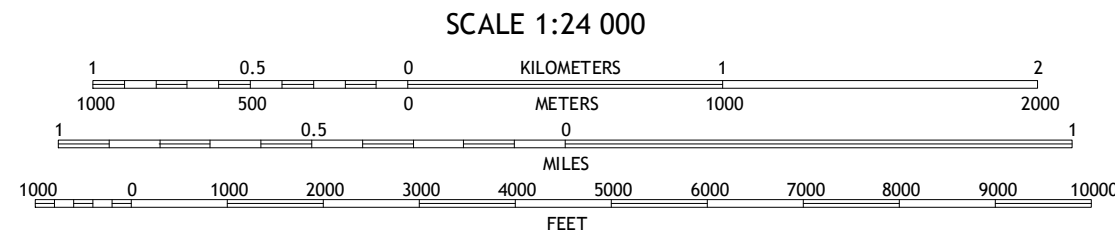
SMYRNA QUADRANGLE  
MISSISSIPPI-COPIAH CO.  
7.5-MINUTE SERIES



**Produced by the United States Geological Survey**  
North American Datum of 1983 (NAD83)  
World Geodetic System of 1984 (WGS84) Projection and  
1 000-meter grid: Universal Transverse Mercator, Zone 15R  
10 000-foot ticks: Mississippi Coordinate System of 1983 (west zone)  
  
This map is not a legal document. Boundaries may be generalized for this map scale. Private lands within government reservations may not be shown. Obtain permission before entering private lands.  
  
Imagery.....NAIP, July 2014  
Roads.....HERE, ©2013 - 2014  
Names.....GNIS, 2015  
Hydrography.....National Hydrography Dataset, 2014  
Contours.....National Elevation Dataset, 2008  
Boundaries.....Multiple sources; see metadata file 1972 - 2015  
Public Land Survey System.....BLM, 2015

UTM GRID AND 2015 MAGNETIC NORTH DECLINATION AT CENTER OF SHEET

U.S. National Grid
100,000-m Square ID
YR
Grid Zone Designation 15R



CONTOUR INTERVAL 10 FEET  
NORTH AMERICAN VERTICAL DATUM OF 1988  
  
This map was produced to conform with the National Geospatial Program US Topo Product Standard, 2011. A metadata file associated with this product is draft version 0.6.18



**ROAD CLASSIFICATION**

Expressway	Secondary Hwy	Ramp	Interstate Route	Local Connector	Local Road	4WD	US Route	State Route
------------	---------------	------	------------------	-----------------	------------	-----	----------	-------------

1	2	3
4	5	6
7	8	9

ADJOINING QUADRANGLES

- 1 Dentville NW
- 2 Dentville
- 3 Gallman
- 4 Barlow
- 5 Hazlehurst
- 6 Caseyville
- 7 Midway
- 8 Wesson

SMYRNA, MS  
2015

