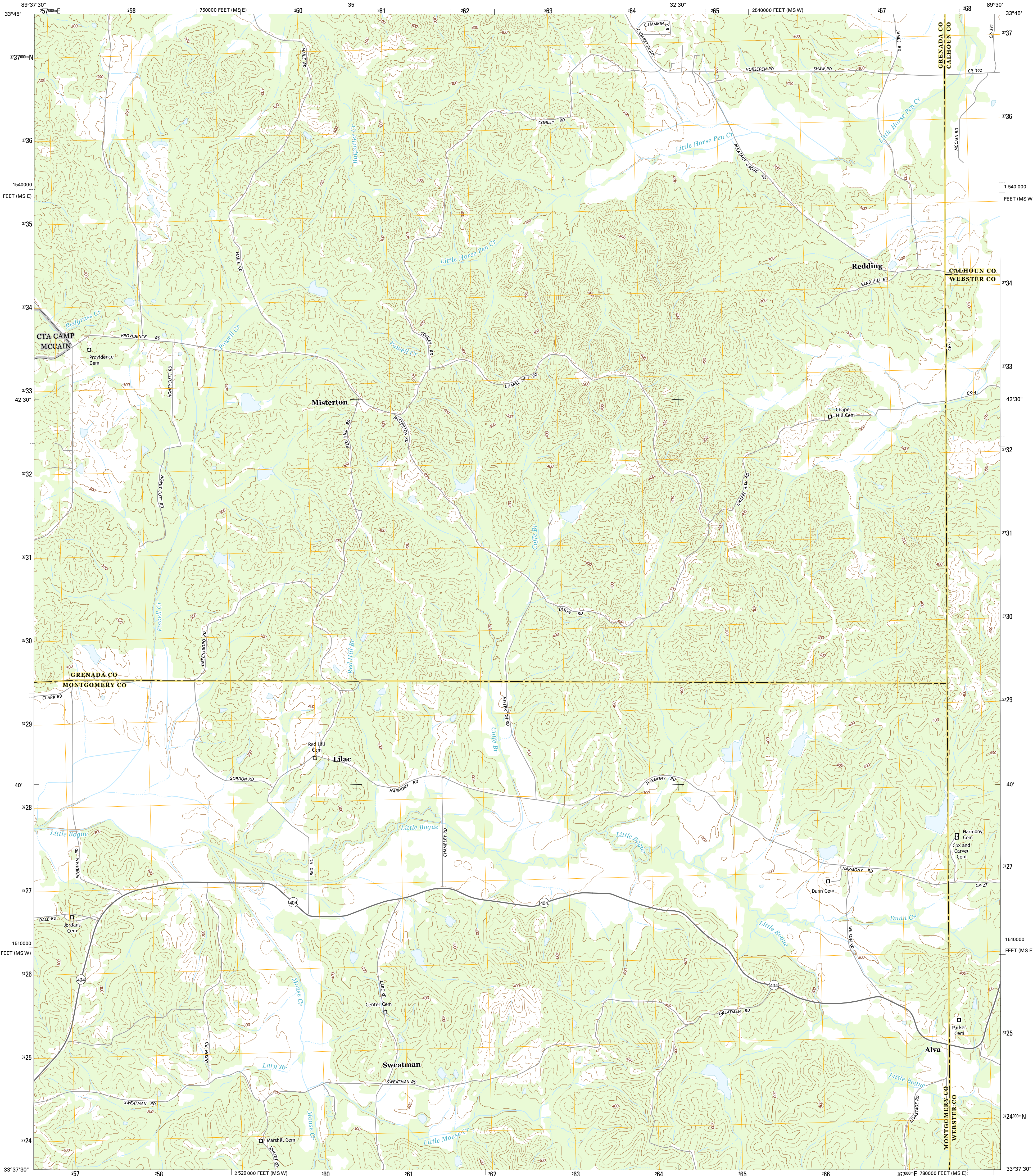




U.S. DEPARTMENT OF THE INTERIOR
U.S. GEOLOGICAL SURVEY



SWEATMAN QUADRANGLE
MISSISSIPPI
7.5-MINUTE SERIES



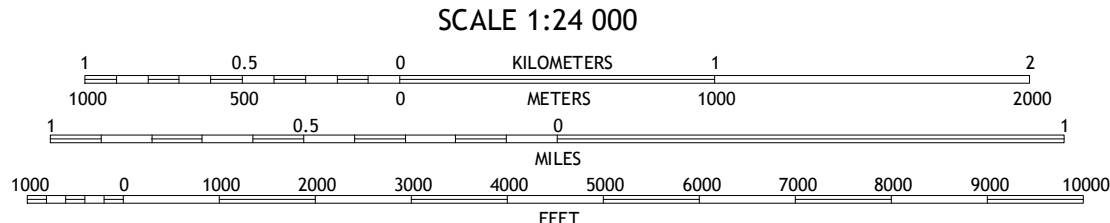
Produced by the United States Geological Survey
North American Datum of 1983 (NAD83)
World Geodetic System of 1984 (WGS84), Projection and
1 000-meter grid; Universal Transverse Mercator, Zone 16S
10 000-foot ticks; Mississippi Coordinate System of 1983 (west
and east zones)

This map is not a legal document. Boundaries may be
generalized for this map scale. Private lands within government
reservations may not be shown. Obtain permission before
entering private lands.

Imagery.....NAIP, July 2014
Roads.....HERE, ©2013 - 2014
Names.....GNIS, 2015
Hydrography.....National Hydrography Dataset, 2014
Contours.....National Elevation Dataset, 2013
Boundaries.....Multiple sources; see metadata file 1972 - 2015
Public Land Survey System.....BLM, 2015

UTM GRID AND 2015 MAGNETIC NORTH
DECLINATION AT CENTER OF SHEET

U.S. National Grid
100,000-m Square ID
BC
Grid Zone Designation
16S



CONTOUR INTERVAL 20 FEET
NORTH AMERICAN VERTICAL DATUM OF 1988
This map was produced to conform with the
National Geospatial Program US Topo Product Standard, 2011.
A metadata file associated with this product is draft version 0.6.18

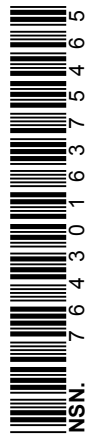


ROAD CLASSIFICATION
Expressway
Secondary Hwy
Ramp
Interstate Route
Local Connector
Local Road
4WD
US Route
State Route

1	2	3
4	5	6
7	8	9

1 Kincaid
2 Gore Springs
3 Big Creek
4 Duck Hill
5 Cadaretta
6 Eskridge
7 Lodi
8 Little Sand Creek

SWEATMAN, MS
2015



NSN 764 016 375 446 0
NGA REF NO. USGS X 24 K 717 1