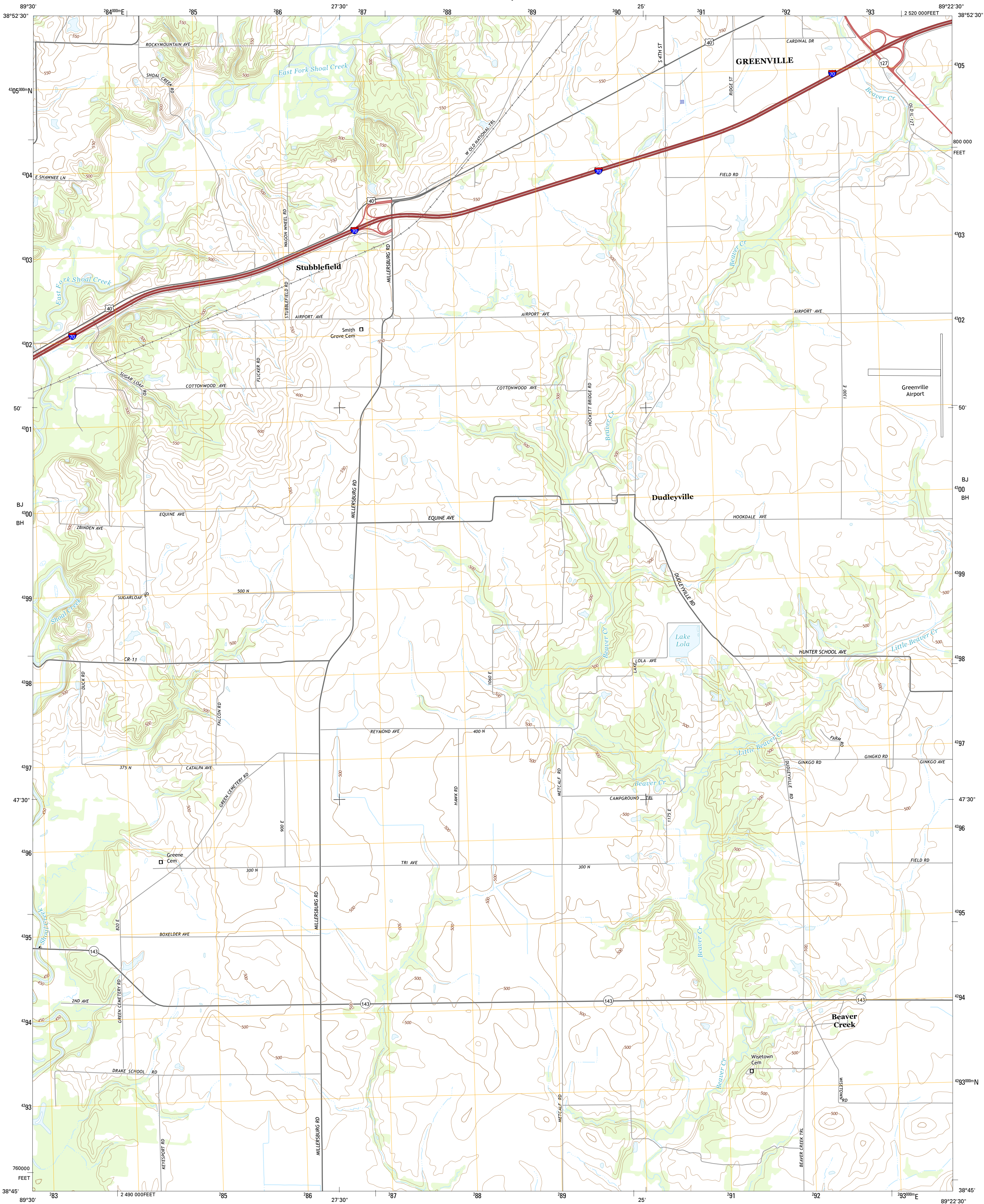




U.S. DEPARTMENT OF THE INTERIOR  
U.S. GEOLOGICAL SURVEY



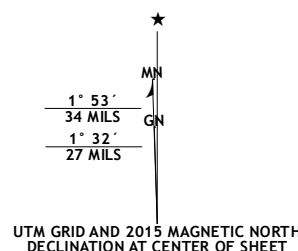
BEAVER CREEK QUADRANGLE  
ILLINOIS-BOND CO.  
7.5-MINUTE SERIES



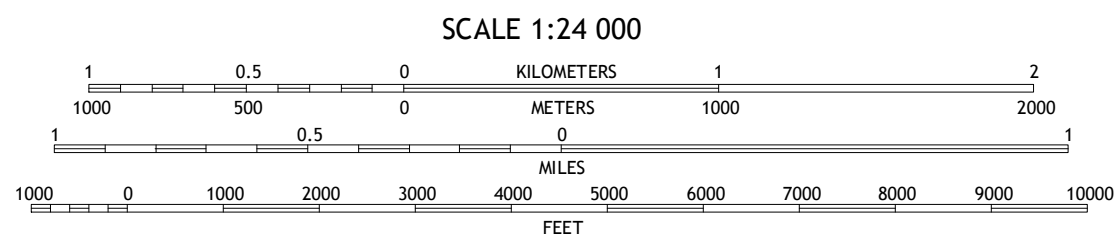
Produced by the United States Geological Survey  
North American Datum of 1983 (NAD83)  
World Geodetic System of 1984 (WGS84). Projection and  
1000-meter grid: Universal Transverse Mercator, Zone 16S  
10 000-foot ticks: Illinois Coordinate System of 1983 (west zone)

This map is not a legal document. Boundaries may be  
generalized for this map scale. Private lands within government  
reservations may not be shown. Obtain permission before  
entering private lands.

Imagery.....NAIP, July 2014  
Roads.....HERE, ©2013 - 2014  
Names.....GNIS, 2015  
Hydrography.....National Hydrography Dataset, 2014  
Contours.....National Elevation Dataset, 2008  
Boundaries.....Multiple sources; see metadata file 1972 - 2015



U.S. National Grid
100,000-m Square ID
BJ
BH
Grid Zone Designation
16S



CONTOUR INTERVAL 10 FEET  
NORTH AMERICAN VERTICAL DATUM OF 1988  
This map was produced to conform with the  
National Geospatial Program US Topo Product Standard, 2011.  
A metadata file associated with this product is draft version 0.6.18



1	2	3
4		5
6	7	8

1 Sorento South

2 Greenville

3 Mulberry Grove

4 Pocahontas

5 Pleasant Mound




6 Saint Rose

7 Stolltown

8 Keyesport

ADJOINING QUADRANGLES

1 Sorrento South  
2 Greenville  
3 Mulberry Grove  
4 Pleasant Mound  
5 Pleasant Mound  
6 Saint Rose  
7 Saint Rose  
8 Keyesport

ROAD CLASSIFICATION	
Expressway	Local Connector
Secondary Hwy	Local Road
Ramp	4WD
 Interstate Route	 US Route
	 State Route

BEAVER CREEK, IL  
2015

