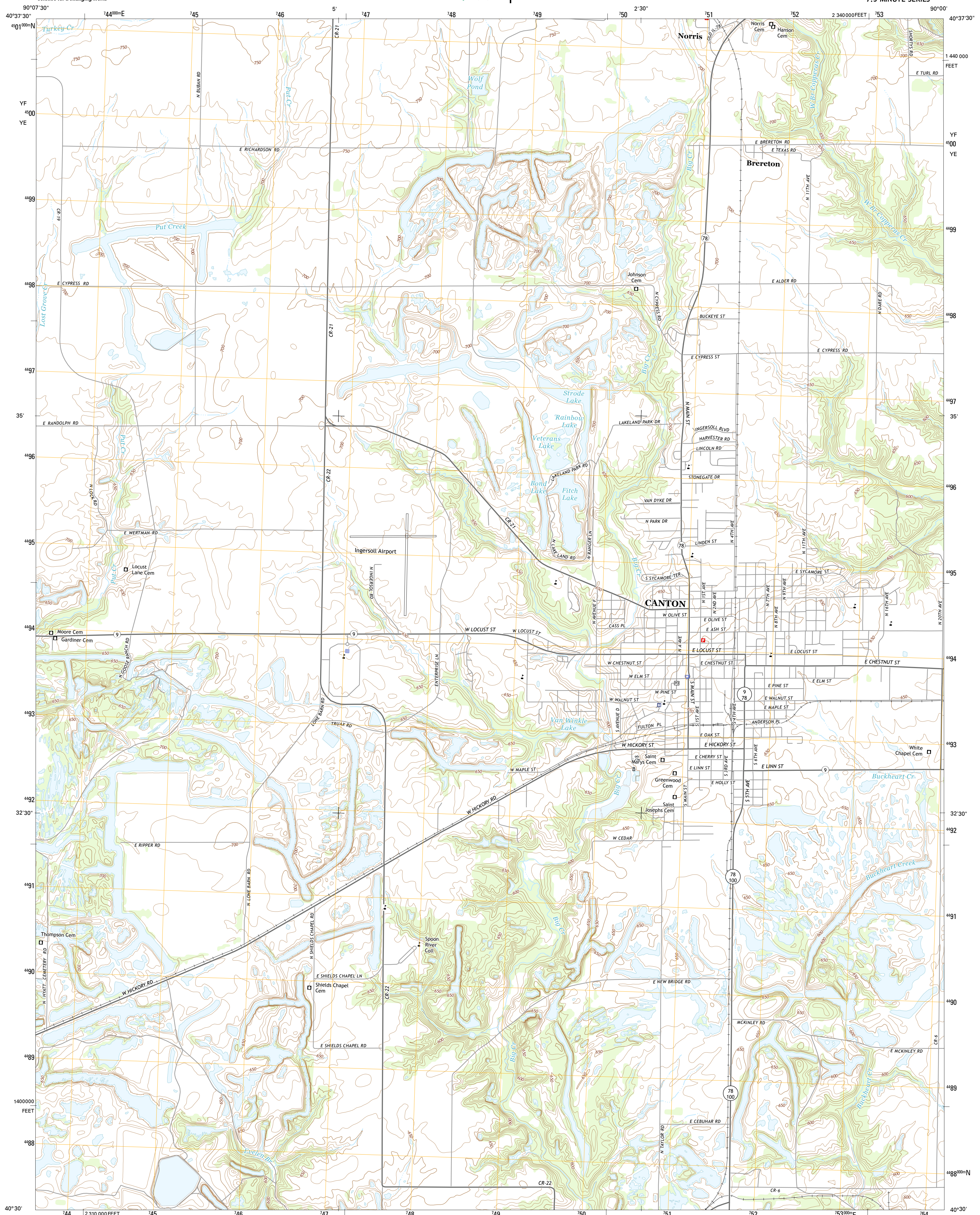




U.S. DEPARTMENT OF THE INTERIOR
U.S. GEOLOGICAL SURVEY



CANTON QUADRANGLE
ILLINOIS-FULTON CO.
7.5-MINUTE SERIES



Produced by the United States Geological Survey
North American Datum of 1983 (NAD83)
World Geodetic System of 1984 (WGS84). Projection and
1 000-meter grid: Universal Transverse Mercator, Zone 15T
10 000-foot ticks: Illinois Coordinate System of 1983 (west zone)

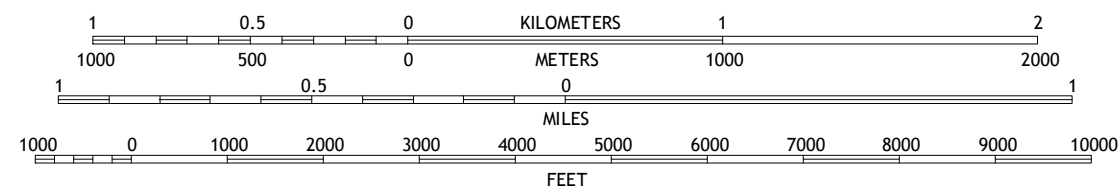
This map is not a legal document. Boundaries may be generalized for this map scale. Private lands within government reservations may not be shown. Obtain permission before entering private lands.

Imagery.....	NAIP, July 2014
Roads.....	HERE, ©2013 - 2014
Names.....	.GNIS, 2015
Hydrography.....	National Hydrography Dataset, 2014
Contours.....	National Elevation Dataset, 2012
Boundaries.....	Multiple sources; see metadata file 1972 - 2015

UTM GRID AND 2015 MAGNETIC NORTH

U.S. National Grid
100,000-m Square ID
$\frac{YF}{YE} \approx 00$
Grid Zone Designation
15T

SCALE 1:24 000



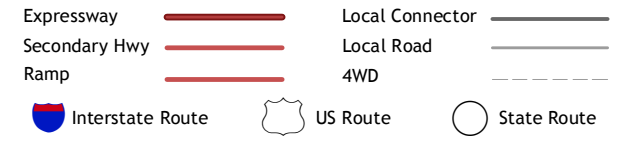
CONTOUR INTERVAL 10 FEET
NORTH AMERICAN VERTICAL DATUM OF 1988

This map was produced to conform with the
National Geospatial Program US Topo Product Standard, 2011.
Data file associated with this product is draft version 0.6.18



QUADRANGLE LOCATION

ROAD CLASSIFICATION



1	2	3
4		5
6	7	8

ADJOINING QUADRANGLES

- 1 Fairview
- 2 Farmington West
- 3 Farmington East
- 4 Fiatt
- 5 Banner
- 6 Lewistown
- 7 Saint David
- 8 Duck Island

ADJOINING QUADRANGLE

CANTON, IL
2015

