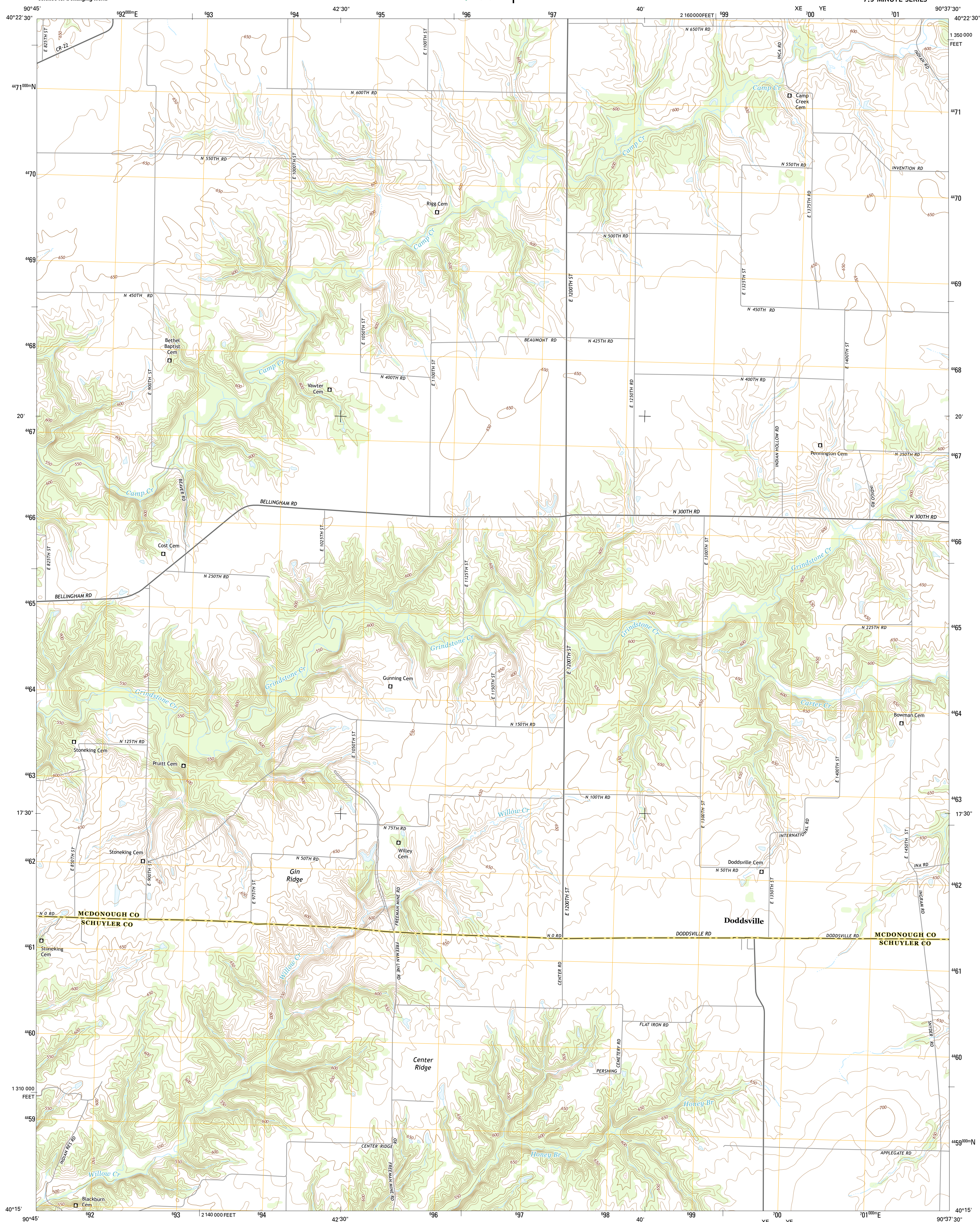




U.S. DEPARTMENT OF THE INTERIOR
U.S. GEOLOGICAL SURVEY

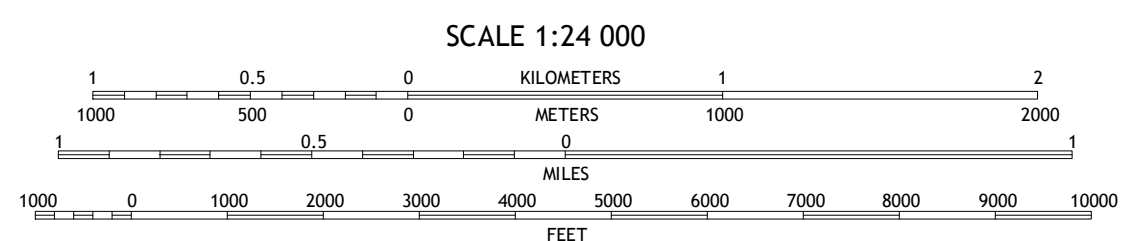
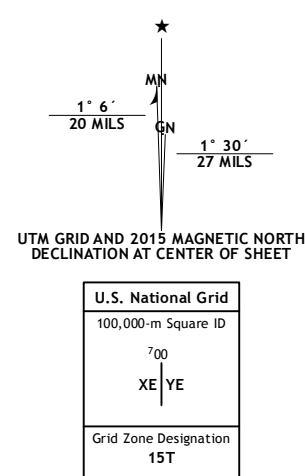


DODDSVILLE QUADRANGLE
ILLINOIS
7.5-MINUTE SERIES



Produced by the United States Geological Survey
North American Datum of 1983 (NAD83)
World Geodetic System of 1984 (WGS84). Projection and
1 000-meter grid: Universal Transverse Mercator, Zone 15T
10 000-foot ticks: Illinois Coordinate System of 1983 (west zone)

Imagery.....	NAIP, June 2014
Roads.....	HERE, ©2013 - 2014
Names.....	GNIS, 2015
Hydrography.....	National Hydrography Dataset, 2014
Contours.....	National Elevation Dataset, 2012
Boundaries.....	Multiple sources; see metadata file 1972 - 2015



CONTOUR INTERVAL 10 FEET
NORTH AMERICAN VERTICAL DATUM OF 1988

This map was produced to conform with the
National Geospatial Program US Topo Product Standard, 2011.
A metadata file associated with this product is draft version 0.6.18








1	2	3
4		5
6	7	8

AD JOINING QUADRANGLES

- 1 Colchester
- 2 Macomb
- 3 Bardolph
- 4 Fandon
- 5 Industry
- 6 Camden
- 7 Erwin
- 8 Rushville North

ROAD CLASSIFICATION

Expressway		Local Connector	
Secondary Hwy		Local Road	
Ramp		4WD	

 Interstate Route  US Route  State Route

DODDSVILLE, IL
2015

