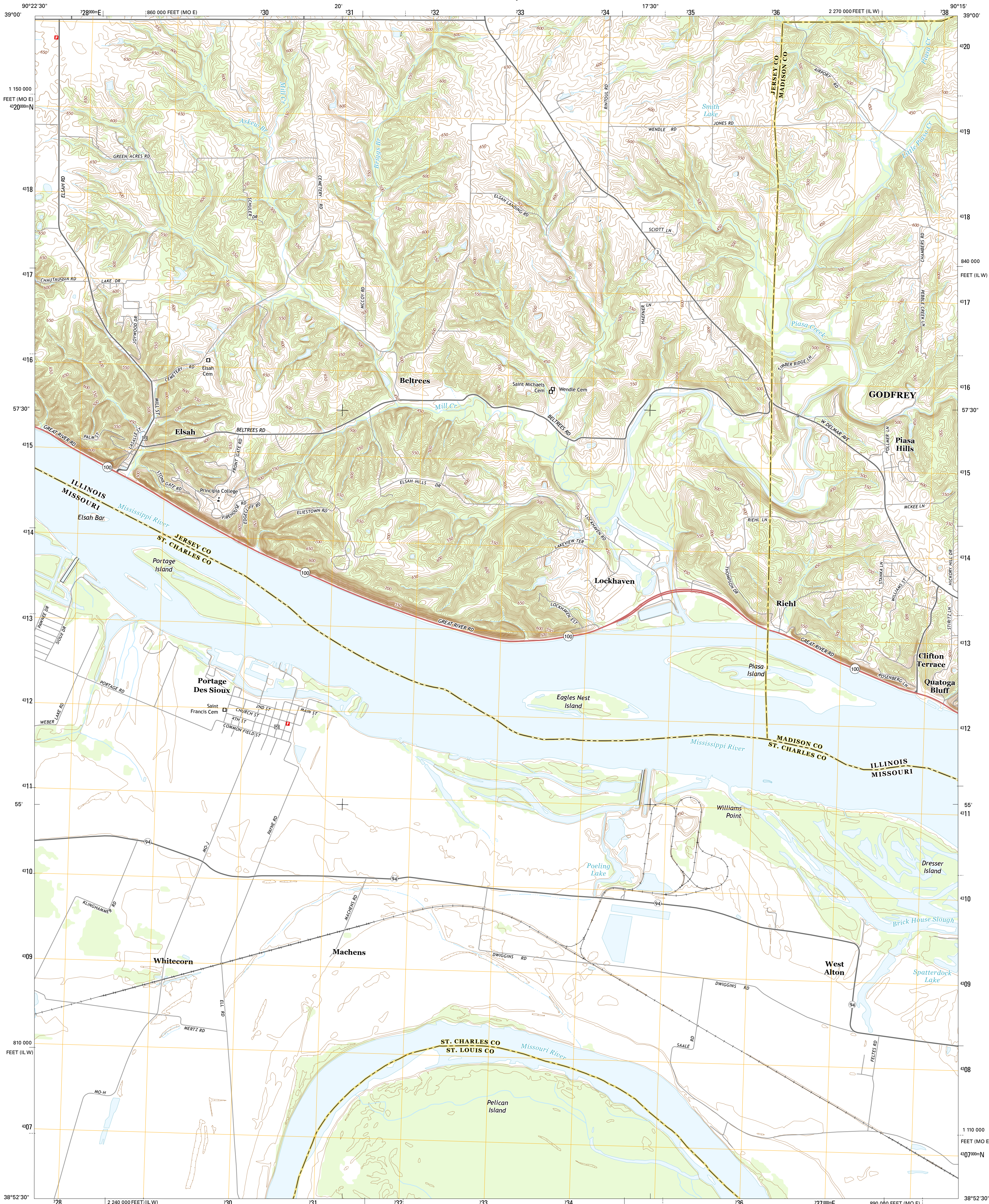




U.S. DEPARTMENT OF THE INTERIOR
U.S. GEOLOGICAL SURVEY



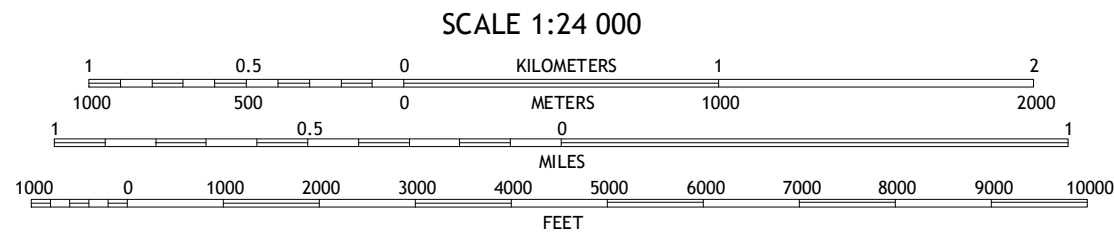
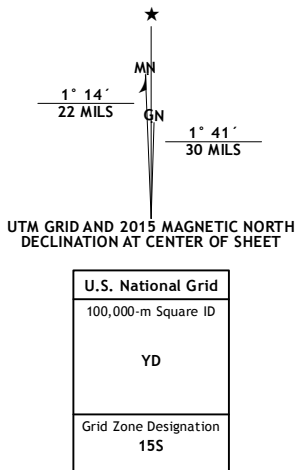
ELSAH QUADRANGLE
ILLINOIS-MISSOURI
7.5-MINUTE SERIES



Produced by the United States Geological Survey
North American Datum of 1983 (NAD83)
World Geodetic System of 1984 (WGS84). Projection and
1000-meter grid: Universal Transverse Mercator, Zone 15S
10 000-foot ticks: Illinois Coordinate System of 1983 (west
zone), Missouri Coordinate System of 1983 (east zone)

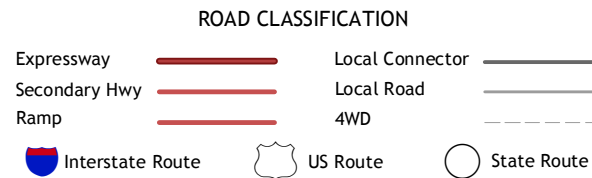
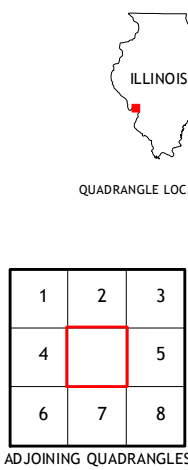
This map is not a legal document. Boundaries may be
generalized for this map scale. Private lands within government
reservations may not be shown. Obtain permission before
entering private lands.

Imagery:.....NAIP, July 2014
Roads:.....HERE, ©2013 - 2014
Names:.....GNIS, 2015
Hydrography:.....National Hydrography Dataset, 2014
Contours:.....National Elevation Dataset, 2000
Boundaries:.....Multiple sources; see metadata file 1972 - 2015
Public Land Survey System:.....BLM, 2011



CONTOUR INTERVAL 10 FEET
NORTH AMERICAN VERTICAL DATUM OF 1988

This map was produced to conform with the
National Geospatial Program US Topo Product Standard, 2011.
A metadata file associated with this product is draft version 0.6.18



1	2	3
4	5	6
7	8	9

ADJOINING QUADRANGLES

ELSAH, IL-MO
2015

