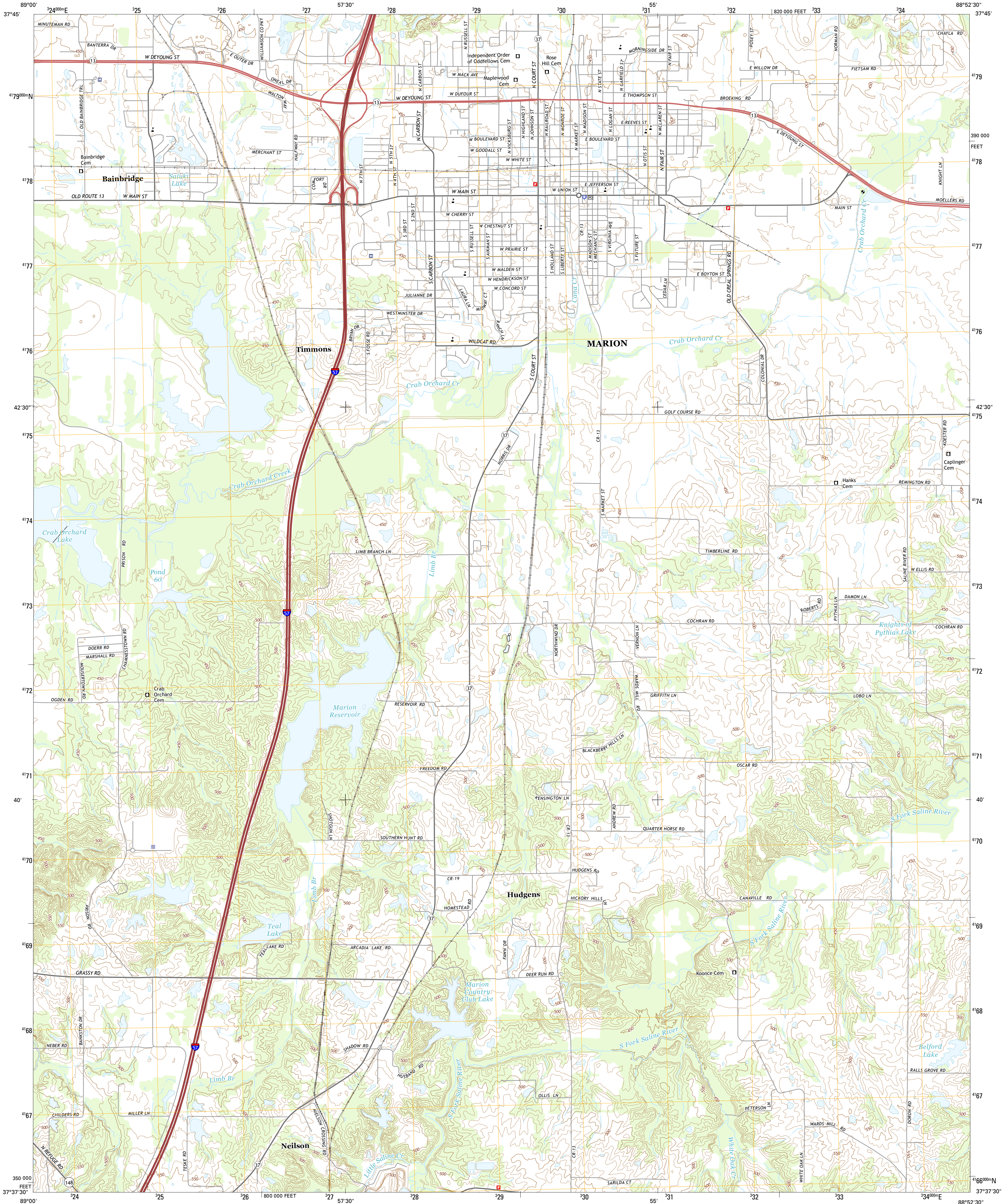




U.S. DEPARTMENT OF THE INTERIOR  
U.S. GEOLOGICAL SURVEY



MARION QUADRANGLE  
ILLINOIS-WILLIAMSON CO.  
7.5-MINUTE SERIES



Produced by the United States Geological Survey  
North American Datum of 1983 (NAD83)  
World Geodetic System of 1984 (WGS84). Projection and  
1 000-meter grid: Universal Transverse Mercator, Zone 16S  
10 000-foot ticks: Illinois Coordinate System of 1983 (east zone)

This map is not a legal document. Boundaries may be  
generalized for this map scale. Private lands within government  
reservations may not be shown. Obtain permission before  
entering private lands.

Imagery.....NAIP, July 2014  
Roads.....HERE, ©2013 - 2014  
Names.....GNIS, 2015  
Hydrography.....National Hydrography Dataset, 2014  
Contours.....National Elevation Dataset, 2014  
Boundaries.....Multiple sources; see metadata file 1972 - 2015

UTM GRID AND 2015 MAGNETIC NORTH  
DECLINATION AT CENTER OF SHEET

U.S. National Grid  
100,000-m Square ID  
CG  
Grid Zone Designation  
16S

SCALE 1:24 000  
KILOMETERS  
METERS  
MILES  
FEET

CONTOUR INTERVAL 10 FEET  
NORTH AMERICAN VERTICAL DATUM OF 1988  
This map was produced to conform with the  
National Geospatial Program US Topo Product Standard, 2011.  
A metadata file associated with this product is draft version 0.6.18



ROAD CLASSIFICATION  
Expressway  
Secondary Hwy  
Ramp  
Local Connector  
Local Road  
4WD  
Interstate Route  
US Route  
State Route

1	2	3
4	5	6
7	8	9

ADJOINING QUADRANGLES

1 Herrin  
2 Johnston City  
3 Pittsburg  
4 Crab Orchard Lake  
5 Crab Orchard  
6 Lick Creek  
7 Goreville  
8 Creal Springs

MARION, IL  
2015

