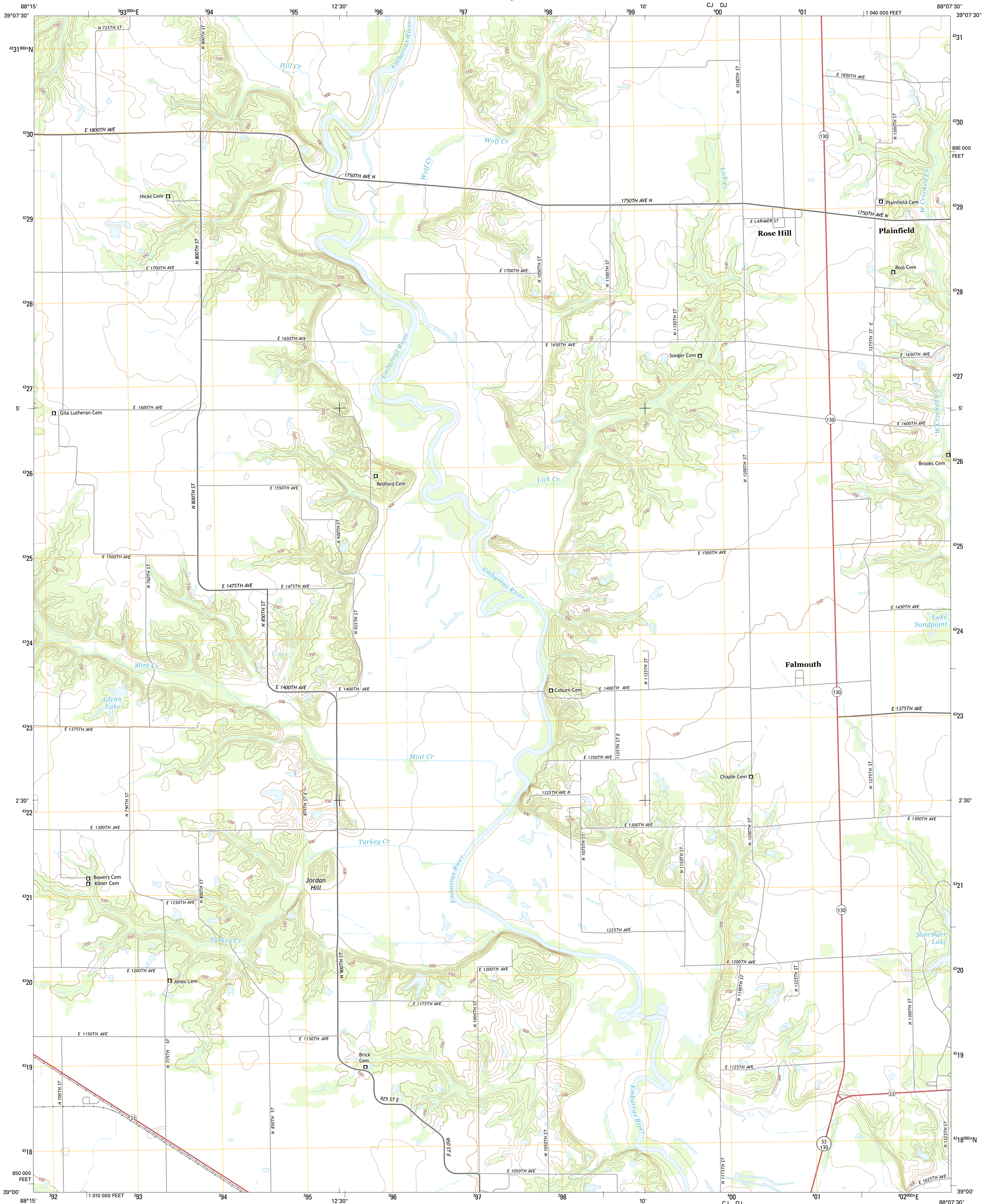




U.S. DEPARTMENT OF THE INTERIOR  
U.S. GEOLOGICAL SURVEY



ROSE HILL QUADRANGLE  
ILLINOIS-JASPER CO.  
7.5-MINUTE SERIES

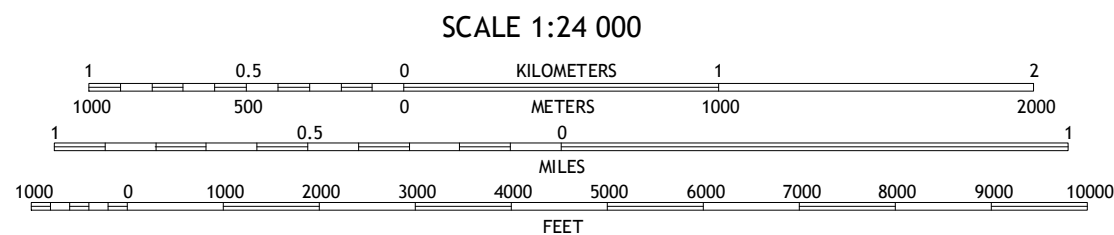


Produced by the United States Geological Survey  
North American Datum of 1983 (NAD83)  
World Geodetic System of 1984 (WGS84). Projection and  
1 000-meter grid: Universal Transverse Mercator, Zone 16S  
10 000-foot ticks: Illinois Coordinate System of 1983 (east zone)  
This map is not a legal document. Boundaries may be  
generalized for this map scale. Private lands within government  
reservations may not be shown. Obtain permission before  
entering private lands.

Imagery.....NAIP, September 2014  
Roads.....HERE, ©2013 - 2014  
Names.....GNIS, 2015  
Hydrography.....National Hydrography Dataset, 2014  
Contours.....National Elevation Dataset, 2008  
Boundaries.....Multiple sources; see metadata file 1972 - 2015

UTM GRID AND 2015 MAGNETIC NORTH  
DECLINATION AT CENTER OF SHEET

|                       |
|-----------------------|
| U.S. National Grid    |
| 100,000 m Square ID   |
| CJ DJ                 |
| Grid Zone Designation |
| 16S                   |



ROAD CLASSIFICATION

|                  |                 |
|------------------|-----------------|
| Expressway       | Local Connector |
| Secondary Hwy    | Local Road      |
| Ramp             | 4WD             |
| Interstate Route | US Route        |
|                  | State Route     |

|   |   |   |
|---|---|---|
| 1 | 2 | 3 |
| 4 | 5 | 6 |
| 7 | 8 | 9 |

ADJOINING QUADRANGLES

1 Woodbury  
2 Greenup  
3 Hazel Dell  
4 Wheeler  
5 Yale  
6 Latona  
7 Newton  
8 Sainte Marie

ROSE HILL, IL  
2015

