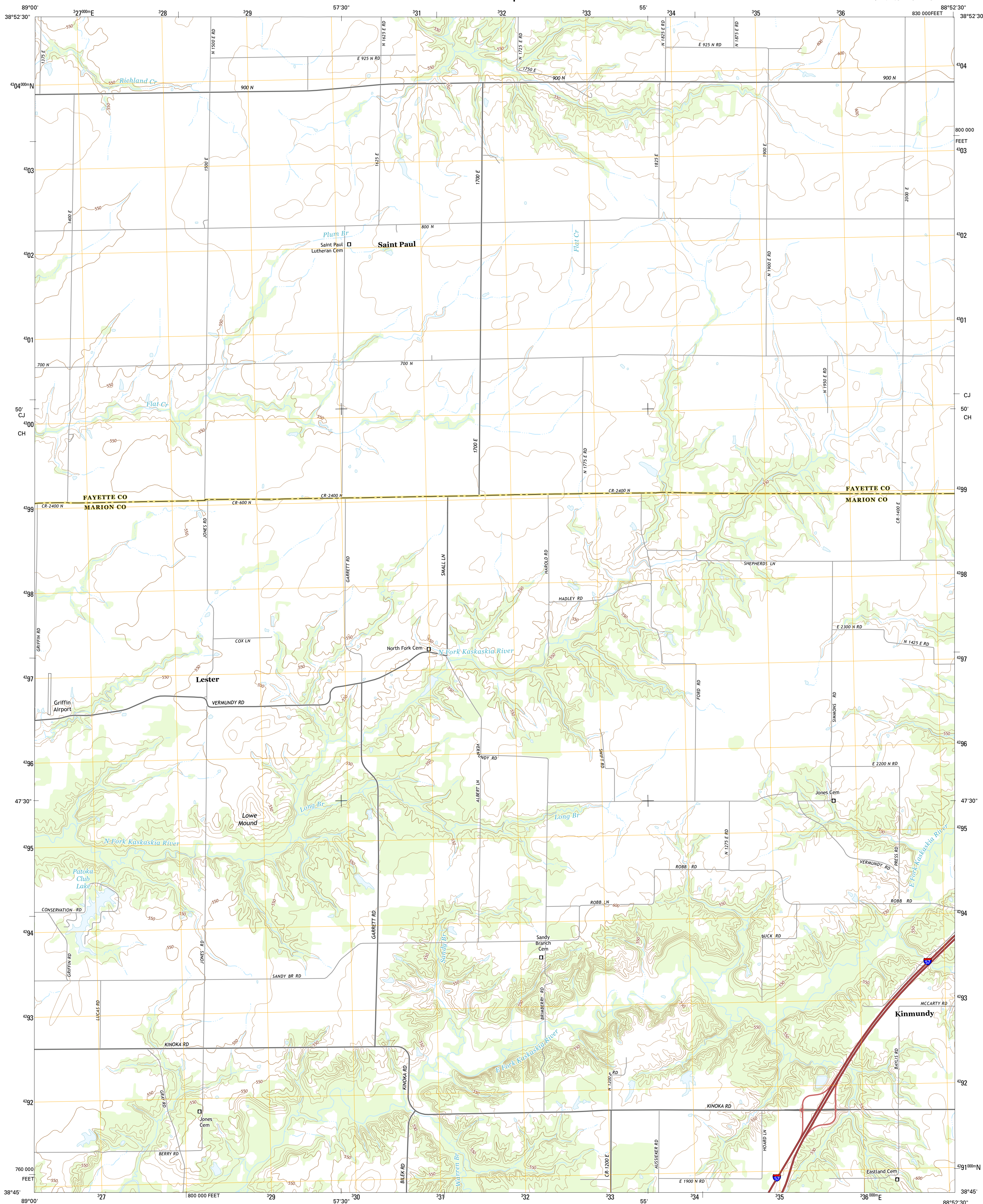




U.S. DEPARTMENT OF THE INTERIOR
U.S. GEOLOGICAL SURVEY



SAINT PAUL QUADRANGLE
ILLINOIS
7.5-MINUTE SERIES



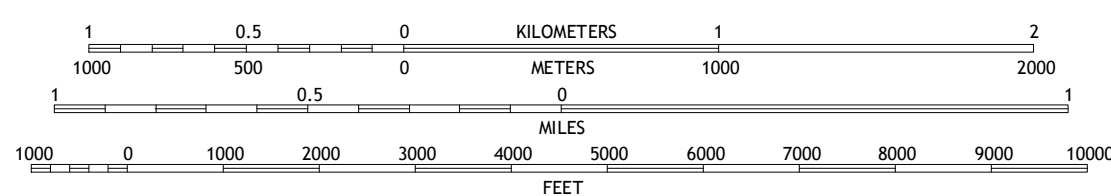
Produced by the United States Geological Survey
North American Datum of 1983 (NAD83)
World Geodetic System of 1984 (WGS84). Projection and
1 000-meter grid: Universal Transverse Mercator, Zone 16S
10 000-foot ticks: Illinois Coordinate System of 1983 (east zone)

This map is not a legal document. Boundaries may be generalized for this map scale. Private lands within government reservations may not be shown. Obtain permission before entering private lands.

Imagery.....	NAIP, July	2014
Roads.....	HERE, ©2013	2014
Names.....	GNIS,	2015
Hydrography.....	National Hydrography Dataset,	2014
Contours.....	National Elevation Dataset,	2008
Boundaries.....	Multiple sources; see metadata file	1972 - 2015

U.S. National Grid
100,000-m Square ID
$\frac{CJ}{CH} 4200$
Grid Zone Designation
16S

SCALE 1:24 000

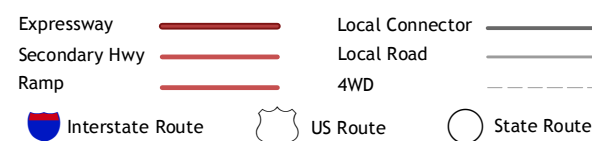


CONTOUR INTERVAL 10 FEET
NORTH AMERICAN VERTICAL DATUM OF 1988

This map was produced to conform with the
Geospatial Program US Topo Product Standard, 2011.
A file associated with this product is draft version 0.6.18



ROAD CLASSIFICATION



1	2	3
4		5
6	7	8

ADJACENT QUADRANGLES

- 1 Vandalia
- 2 Brownstown
- 3 Loogootee
- 4 Patoka
- 5 Kinmundy
- 6 Fairman
- 7 Salem North
- 8 Omega

SAINT PAUL, IL
2015

