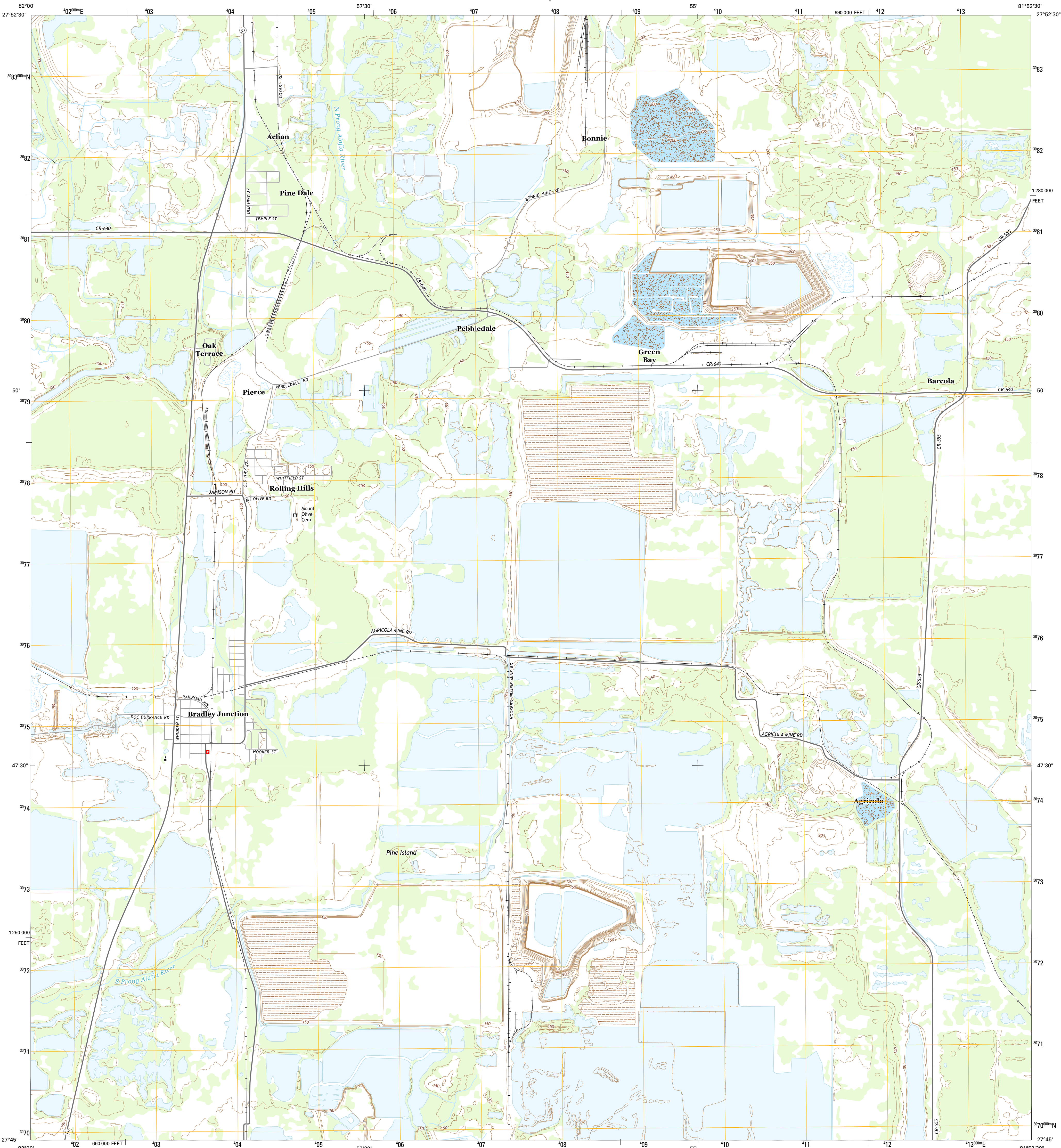




U.S. DEPARTMENT OF THE INTERIOR
U.S. GEOLOGICAL SURVEY



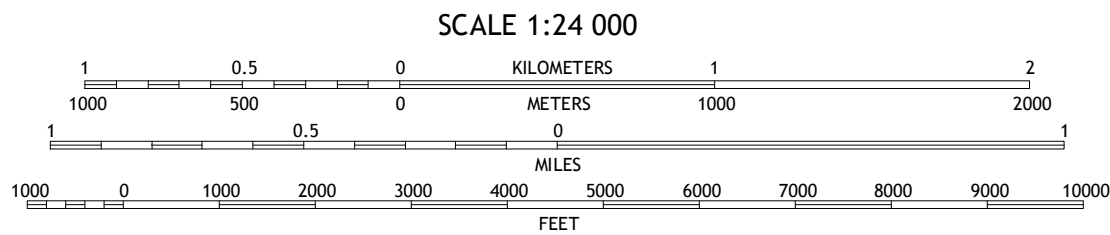
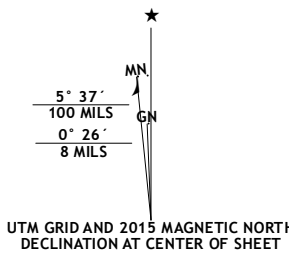
BRADLEY JUNCTION QUADRANGLE
FLORIDA-POLK CO.
7.5-MINUTE SERIES



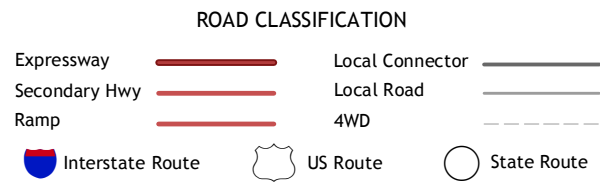
Produced by the United States Geological Survey
North American Datum of 1983 (NAD83)
World Geodetic System of 1984 (WGS84). Projection and
1 000-meter grid: Universal Transverse Mercator, Zone 17R
10 000-foot ticks: Florida Coordinate System of 1983 (west zone)

This map is not a legal document. Boundaries may be
generalized for this map scale. Private lands within government
reservations may not be shown. Obtain permission before
entering private lands.

Imagery.....NAIP, June 2013
Roads.....HERE, ©2013 - 2014
Names.....National Hydrography Dataset, 2013
Hydrography.....National Elevation Dataset, 2009
Contours.....Multiple sources; see metadata file 1972 - 2015
Public Land Survey System.....BLM, 2015



CONTOUR INTERVAL 10 FEET
NORTH AMERICAN VERTICAL DATUM OF 1988
This map was produced to conform with the
National Geospatial Program US Topo Product Standard, 2011.
A metadata file associated with this product is draft version 0.6.18



1	2	3	1 Nichols
4	5	6	2 Walberry
7	8	9	3 Bartow
10	11	12	4 Keyville
13	14	15	5 Homeland
16	17	18	6 Duette NE
19	20	21	7 Baird
22	23	24	8 Bowling Green

BRADLEY JUNCTION, FL
2015

