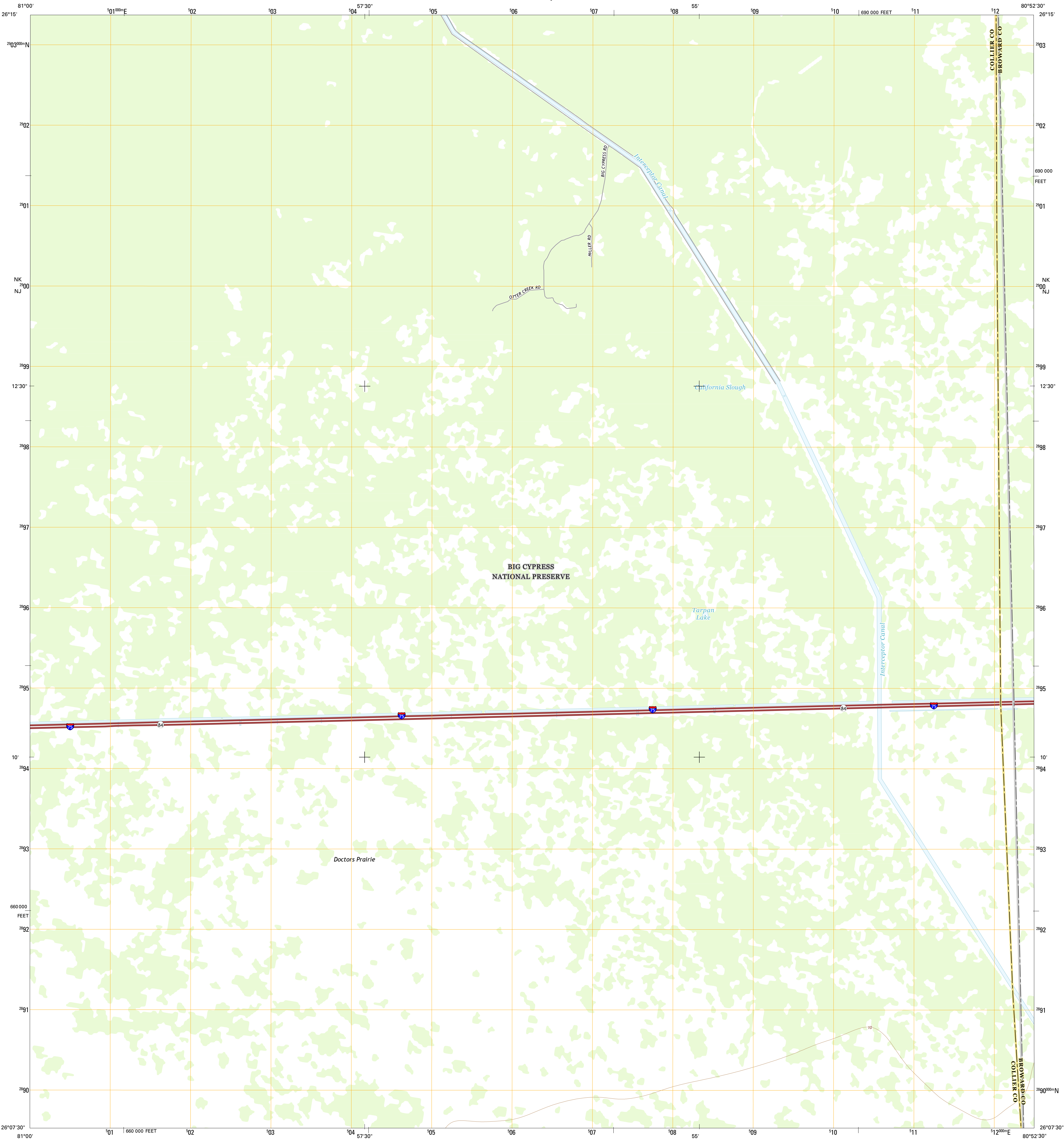




U.S. DEPARTMENT OF THE INTERIOR  
U.S. GEOLOGICAL SURVEY



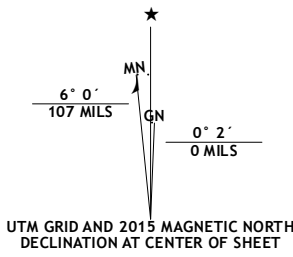
CALIFORNIA SLOUGH QUADRANGLE  
FLORIDA  
7.5-MINUTE SERIES



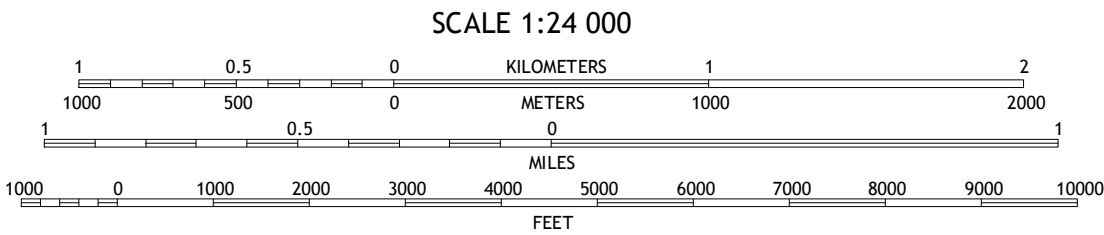
Produced by the United States Geological Survey  
North American Datum of 1983 (NAD83)  
World Geodetic System of 1984 (WGS84), Projection and  
1 000-meter grid: Universal Transverse Mercator, Zone 17R  
10 000-foot ticks: Florida Coordinate System of 1983 (east zone)

This map is not a legal document. Boundaries may be  
generalized for this map scale. Private lands within government  
reservations may not be shown. Obtain permission before  
entering private lands.

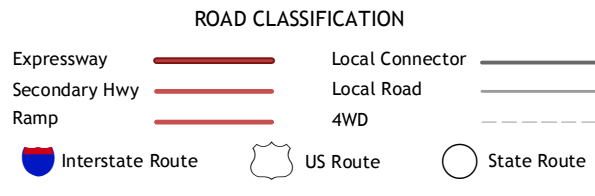
Imagery.....NAIP, October 2013  
Roads.....HERE, ©2013 - 2014  
Names.....GNS, 2015  
Hydrography.....National Hydrography Dataset, 2013  
Contours.....National Elevation Dataset, 1999  
Boundaries.....Multiple sources; see metadata file 1972 - 2015  
Public Land Survey System.....BLM, 2015



| U.S. National Grid    |
|-----------------------|
| 100,000-m Square ID   |
| NK                    |
| NJ                    |
| 700                   |
| Grid Zone Designation |
| 17R                   |



CONTOUR INTERVAL 10 FEET  
NORTH AMERICAN VERTICAL DATUM OF 1988  
This map was produced to conform with the  
National Geospatial Program US Topo Product Standard, 2011.  
A metadata file associated with this product is draft version 0.6.18



|   |   |                           |                   |
|---|---|---------------------------|-------------------|
| 1 | 2 | 3                         | 1 Low Bone Island |
| 4 | 5 | 2 Goddard Strand          |                   |
| 6 | 7 | 3 North of Lone Palm Head |                   |
|   |   | 4 Whidden Lake            |                   |
|   |   | 5 Lone Palm Head          |                   |
|   |   | 6 Thompson Pine Island    |                   |
|   |   | 7 West of Horseshoe Head  |                   |
|   |   | 8 Horseshoe Head          |                   |

ADJOINING QUADRANGLES

CALIFORNIA SLOUGH, FL  
2015

