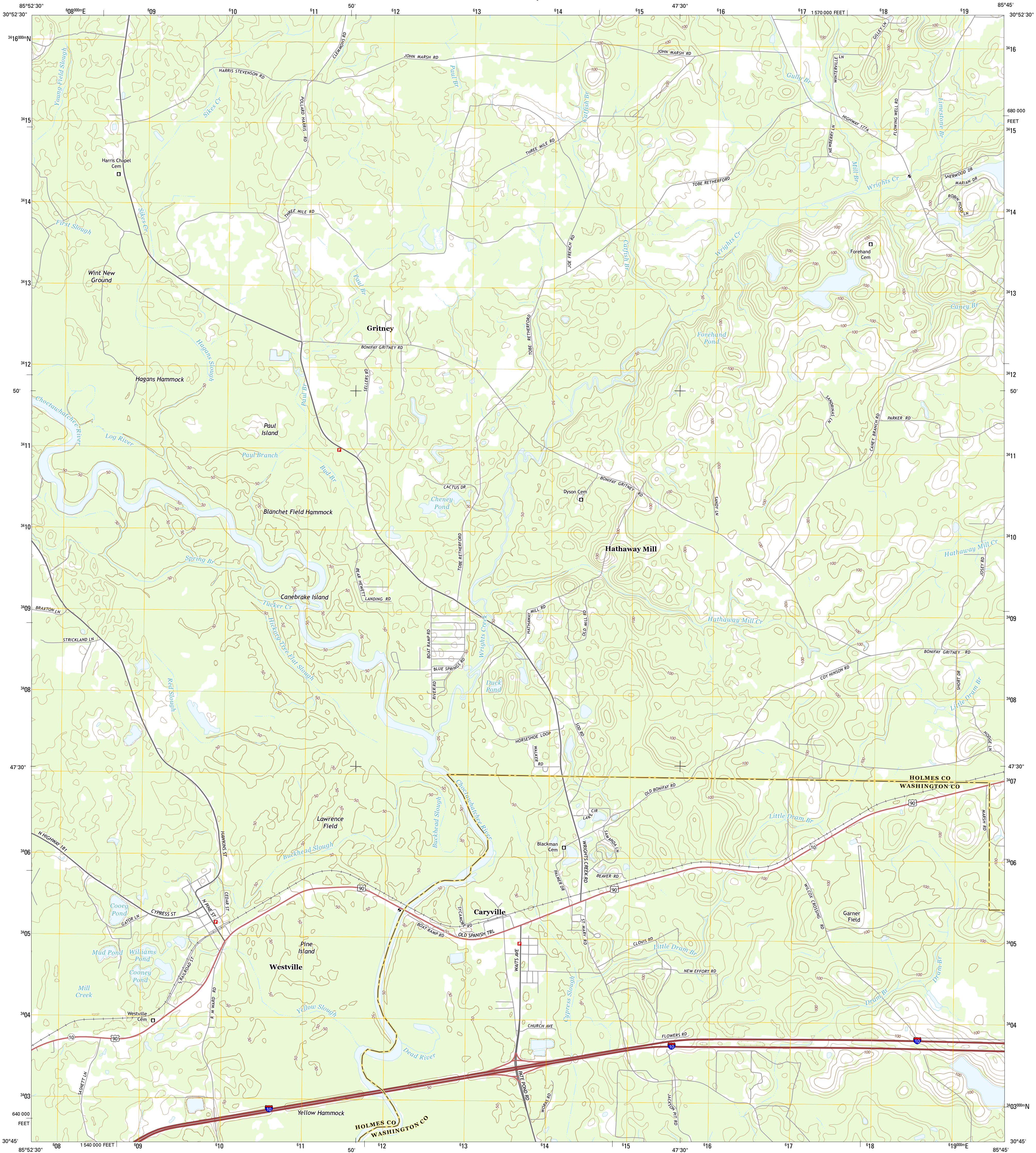




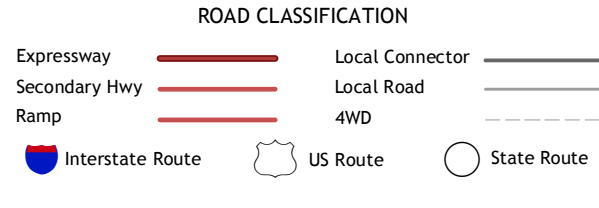
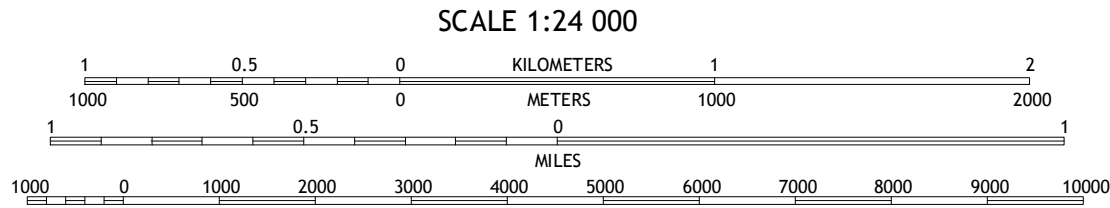
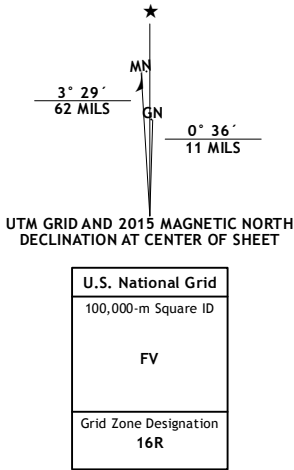
U.S. DEPARTMENT OF THE INTERIOR
U.S. GEOLOGICAL SURVEY



CARYVILLE QUADRANGLE
FLORIDA
7.5-MINUTE SERIES



Produced by the United States Geological Survey
North American Datum of 1983 (NAD83)
World Geodetic System of 1984 (WGS84). Projection and
1 000-meter grid: Universal Transverse Mercator, Zone 16R
10 000-foot ticks: Florida Coordinate System of 1983 (north
zone)
This map is not a legal document. Boundaries may be
generalized for this map scale. Private lands within government
reservations may not be shown. Obtain permission before
entering private lands.
Imagery.....NAIP, October 2013
Roads.....HERE, ©2013 - 2014
Names.....GNIS, 2015
Hydrography.....National Hydrography Dataset, 2013
Contours.....National Elevation Dataset, 2009
Boundaries.....Multiple sources; see metadata file 1972 - 2015
Public Land Survey System.....BLM, 2015



1	2	3	1 Hobbs Crossroads
4	5	6	2 Izagora
7	8	9	3 Esto
			4 Prosperity
			5 Bonifay
			6 Ponce de Leon
			7 Hinsons Crossroads
			8 Poplar Head

CARYVILLE, FL
2015

