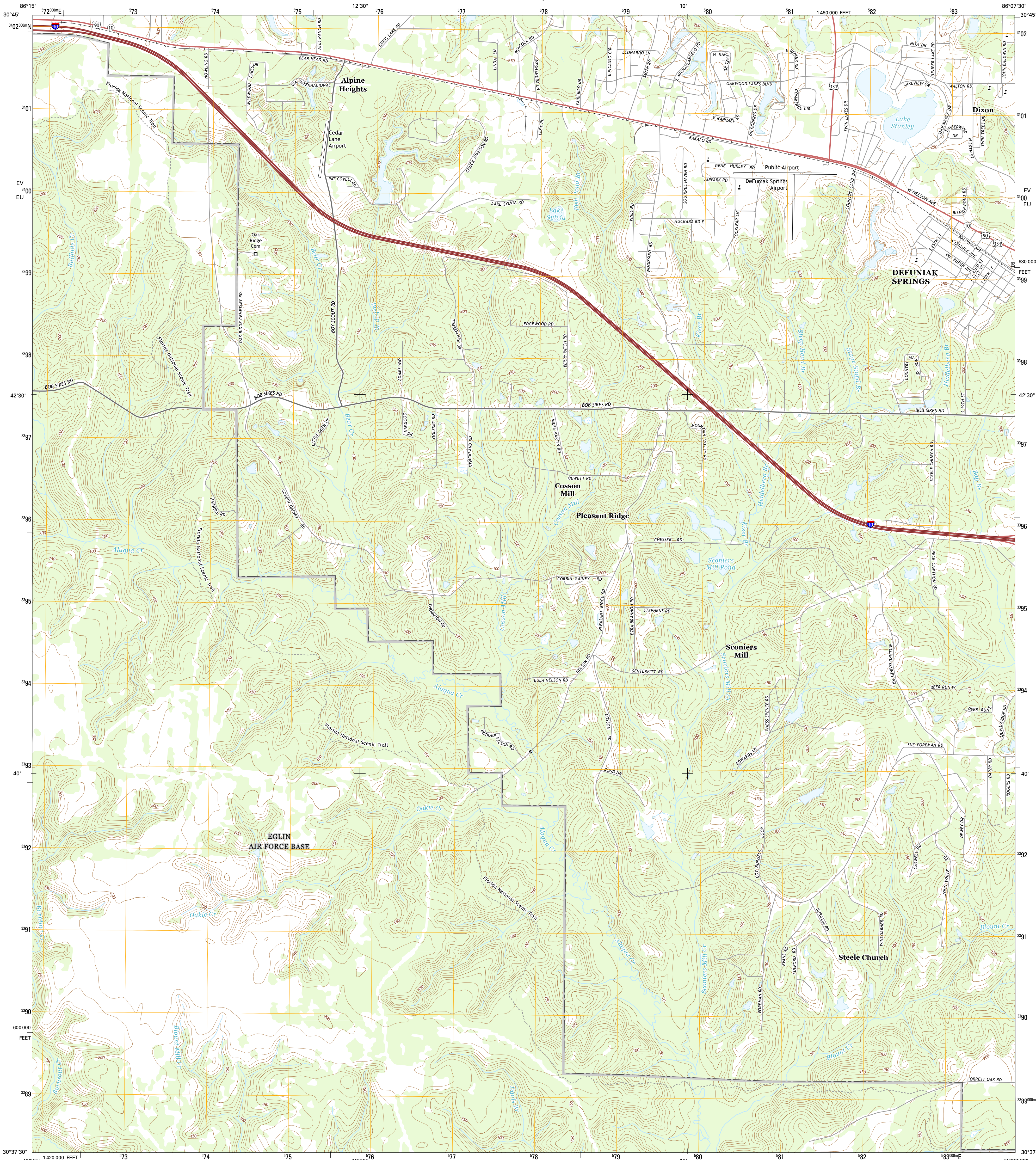




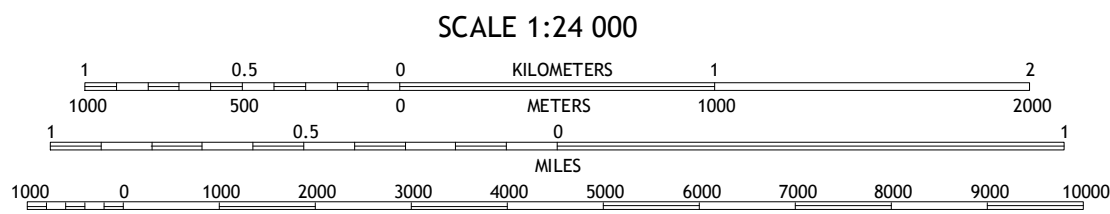
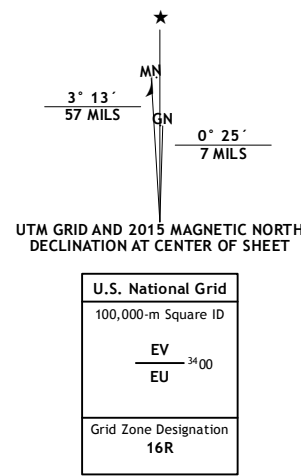
U.S. DEPARTMENT OF THE INTERIOR  
U.S. GEOLOGICAL SURVEY



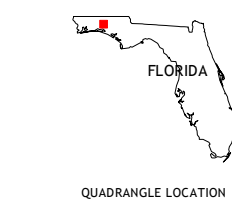
DE FUNIAK SPRINGS WEST QUADRANGLE  
FLORIDA-WALTON CO.  
7.5-MINUTE SERIES



Produced by the United States Geological Survey  
North American Datum of 1983 (NAD83)  
World Geodetic System of 1984 (WGS84), Projection and  
1 000-meter grid: Universal Transverse Mercator, Zone 16R  
10 000-foot ticks: Florida Coordinate System of 1983 (north  
zone)  
This map is not a legal document. Boundaries may be  
generalized for this map scale. Private lands within government  
reservations may not be shown. Obtain permission before  
entering private lands.  
Imagery.....NAIP, October 2013  
Roads.....HERE, ©2013 - 2014  
Names.....GNIS, 2015  
Hydrography.....National Hydrography Dataset, 2013  
Contours.....National Elevation Dataset, 2012  
Boundaries.....Multiple sources; see metadata file 1972 - 2015  
Public Land Survey System.....BLM, 2015



CONTOUR INTERVAL 10 FEET  
NORTH AMERICAN VERTICAL DATUM OF 1988  
This map was produced to conform with the  
National Geospatial Program US Topo Product Standard, 2011.  
A metadata file associated with this product is draft version 0.6.18



|   |   |   |                          |
|---|---|---|--------------------------|
| 1 | 2 | 3 | 1 New Harmony            |
| 4 | 5 | 6 | 2 Liberty                |
| 7 | 8 | 9 | 3 Glendale               |
|   |   |   | 4 Mossy Head             |
|   |   |   | 5 De Funiak Springs East |
|   |   |   | 6 Nicville SE            |
|   |   |   | 7 Portland               |
|   |   |   | 8 Rock Hill              |

| ROAD CLASSIFICATION |                 |             |
|---------------------|-----------------|-------------|
| Expressway          | Local Connector |             |
| Secondary Hwy       | Local Road      |             |
| Ramp                | 4WD             |             |
| Interstate Route    | US Route        | State Route |

DE FUNIAK SPRINGS WEST, FL  
2015

