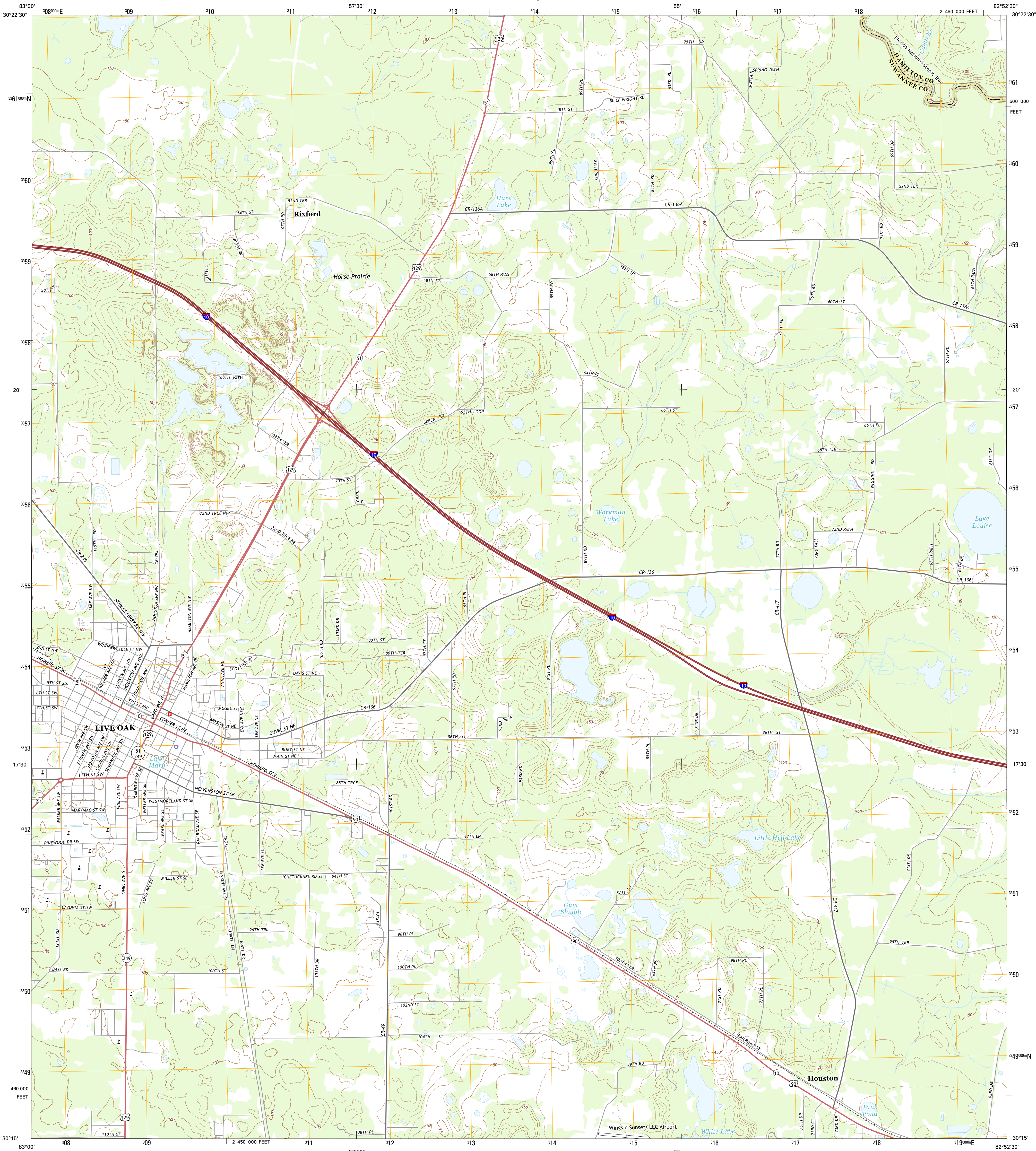




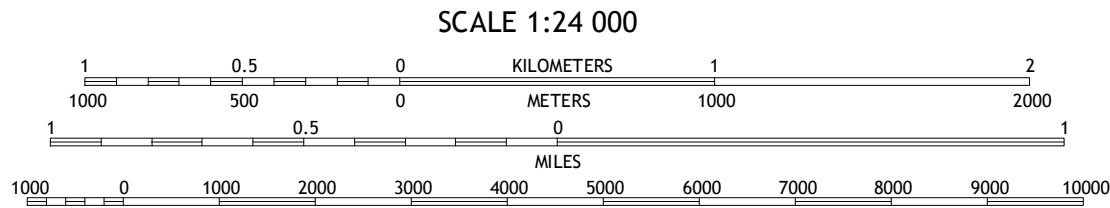
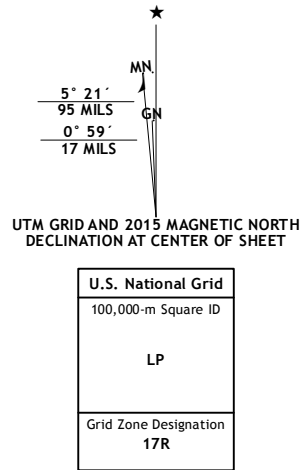
U.S. DEPARTMENT OF THE INTERIOR  
U.S. GEOLOGICAL SURVEY



LIVE OAK EAST QUADRANGLE  
FLORIDA  
7.5-MINUTE SERIES



**Produced by the United States Geological Survey**  
North American Datum of 1983 (NAD83)  
World Geodetic System of 1984 (WGS84) Projection and  
1000-meter grid: Universal Transverse Mercator, Zone 17R  
10 000-foot ticks: Florida Coordinate System of 1983 (north  
zone)  
This map is not a legal document. Boundaries may be  
generalized for this map scale. Private lands within government  
reservations may not be shown. Obtain permission before  
entering private lands.  
Imagery.....NAIP, October 2013  
Roads.....HERE, ©2013 - 2014  
Names.....GNIS, 2015  
Hydrography.....National Hydrography Dataset, 2013  
Contours.....National Elevation Dataset, 2012  
Boundaries.....Multiple sources; see metadata file 1972 - 2015  
Public Land Survey System.....BLM, 2015



CONTOUR INTERVAL 5 FEET  
NORTH AMERICAN VERTICAL DATUM OF 1988  
This map was produced to conform with the  
National Geospatial Program US Topo Product Standard, 2011.  
A metadata file associated with this product is draft version 0.6.18



**ROAD CLASSIFICATION**  
Expressway  
Secondary Hwy  
Ramp  
Local Connector  
Local Road  
4WD  
US Route  
State Route

1	2	3
4	5	6
7	8	9

ADJOINING QUADRANGLES

1 Fort Union  
2 Hillcoat  
3 Genoa  
4 Live Oak West  
5 White Springs West  
6 Mayo NE  
7 McAlpin  
8 Wellborn

LIVE OAK EAST, FL  
2015

