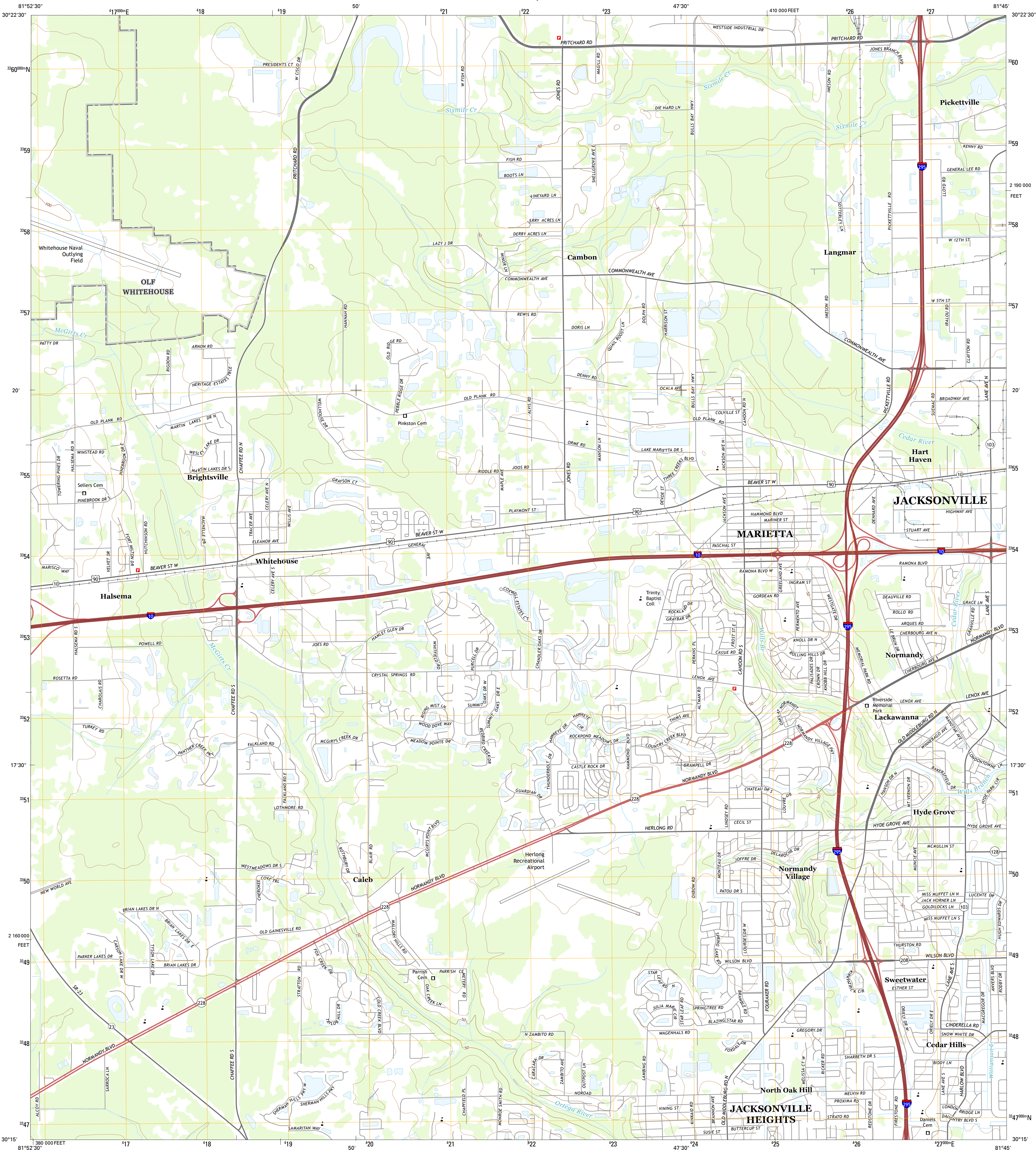




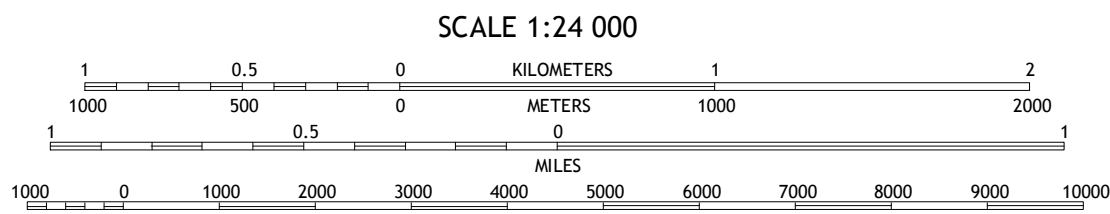
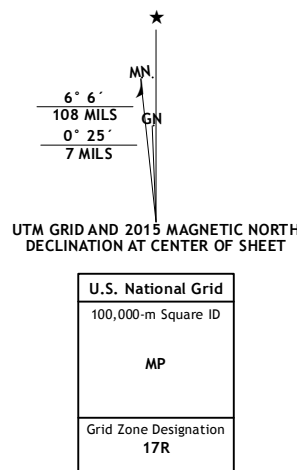
U.S. DEPARTMENT OF THE INTERIOR
U.S. GEOLOGICAL SURVEY



MARIETTA QUADRANGLE
FLORIDA-DUVAL CO.
7.5-MINUTE SERIES



Produced by the United States Geological Survey
North American Datum of 1983 (NAD83)
World Geodetic System of 1984 (WGS84) Projection and
1000-meter grid: Universal Transverse Mercator, Zone 17R
100-foot ticks: Florida Coordinate System of 1983 (east zone)
This map is not a legal document. Boundaries may be
generalized for this map scale. Private lands within government
reservations may not be shown. Obtain permission before
entering private lands.



CONTOUR INTERVAL 10 FEET
NORTH AMERICAN VERTICAL DATUM OF 1988
This map was produced to conform with the
National Geospatial Program US Topo Product Standard, 2011.
A metadata file associated with this product is draft version 0.6.18



1	2	3	1 Bryceville
4	5	6	2 Dinsmore
7	8	9	3 Trout River
			4 Baldwin
			5 Jacksonville
			6 Fiftone
			7 Jacksonville Heights
			8 Orange Park

ROAD CLASSIFICATION			
Expressway	Secondary Hwy	Ramp	Local Connector
Interstate Route	US Route	State Route	4WD

MARIETTA, FL
2015

