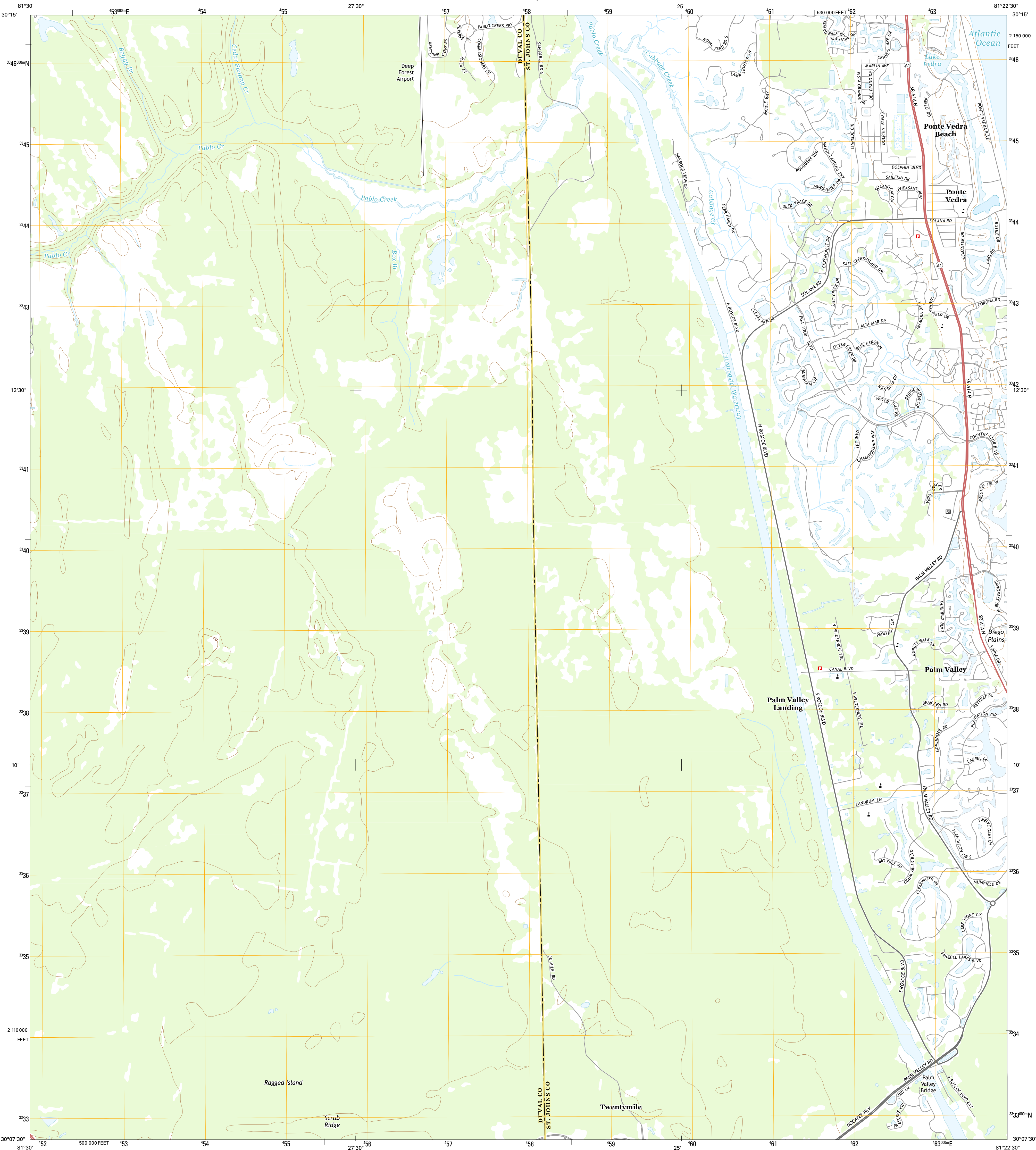




U.S. DEPARTMENT OF THE INTERIOR
U.S. GEOLOGICAL SURVEY

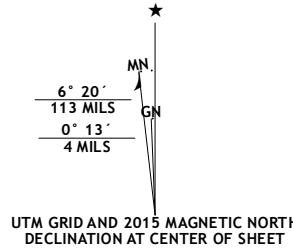


PALM VALLEY QUADRANGLE
FLORIDA
7.5-MINUTE SERIES

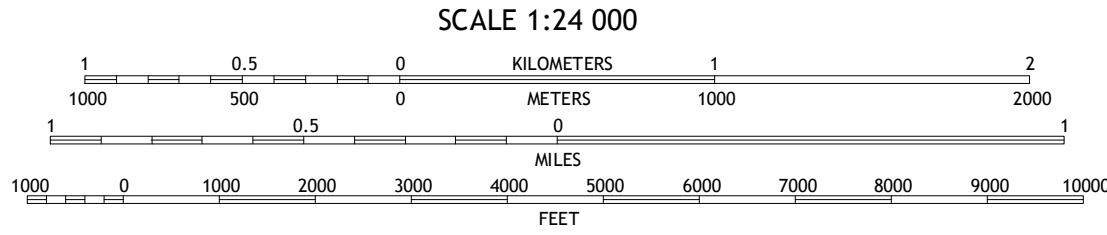


Produced by the United States Geological Survey
North American Datum of 1983 (NAD83)
World Geodetic System of 1984 (WGS84). Projection and
1 000-meter grid: Universal Transverse Mercator, Zone 17R
10 000-foot ticks: Florida Coordinate System of 1983 (east zone)
This map is not a legal document. Boundaries may be
generalized for this map scale. Private lands within government
reservations may not be shown. Obtain permission before
entering private lands.

Imagery.....NAIP, October 2013
Roads.....HERE, ©2013 - 2014
Names.....GNIS, 2015
Hydrography.....National Hydrography Dataset, 2015
Contours.....National Elevation Dataset, 2008
Boundaries.....Multiple sources; see metadata file 1972 - 2015
Public Land Survey System.....BLM, 2015



| |
|-----------------------|
| U.S. National Grid |
| 100,000-m Square ID |
| MP |
| Grid Zone Designation |
| 17R |



CONTOUR INTERVAL 10 FEET
NORTH AMERICAN VERTICAL DATUM OF 1988
This map was produced to conform with the
National Geospatial Program US Topo Product Standard, 2011.
A metadata file associated with this product is draft version 0.6.18



| | | | |
|---|---|---|---------------------------|
| 1 | 2 | 3 | 1 Arlington |
| | | | 2 Jacksonville Beach |
| 4 | 5 | | 3 Bayard |
| | | | 4 Mickler Landing |
| 6 | 7 | 8 | 5 Orangedale |
| | | | 6 Durbin |
| | | | 7 South Ponte Vedra Beach |

| ROAD CLASSIFICATION | |
|---------------------|-----------------|
| Expressway | Local Connector |
| Secondary Hwy | Local Road |
| Ramp | 4WD |
| Interstate Route | US Route |
| | State Route |

PALM VALLEY, FL
2015

