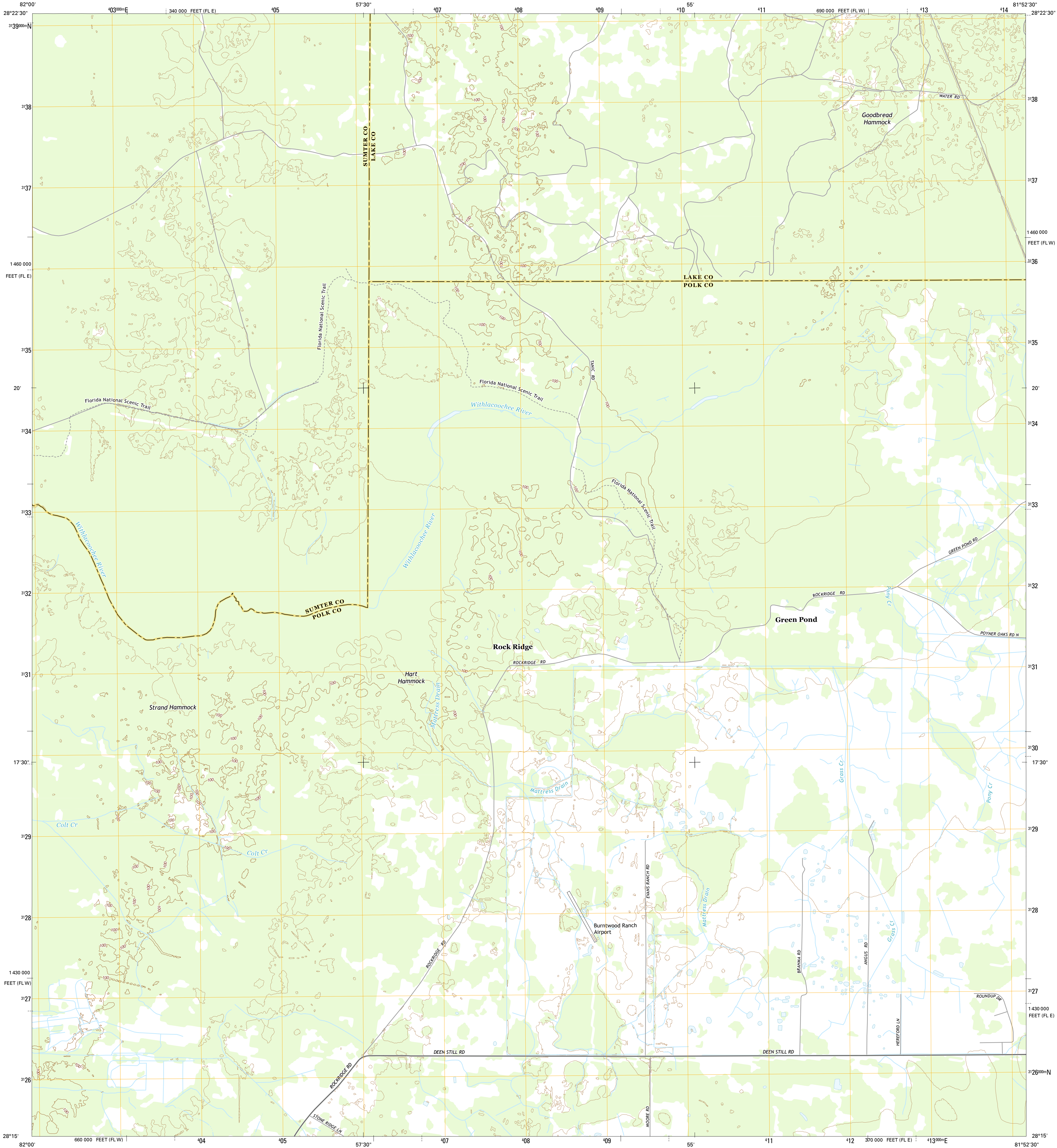




U.S. DEPARTMENT OF THE INTERIOR
U.S. GEOLOGICAL SURVEY



ROCK RIDGE QUADRANGLE
FLORIDA
7.5-MINUTE SERIES



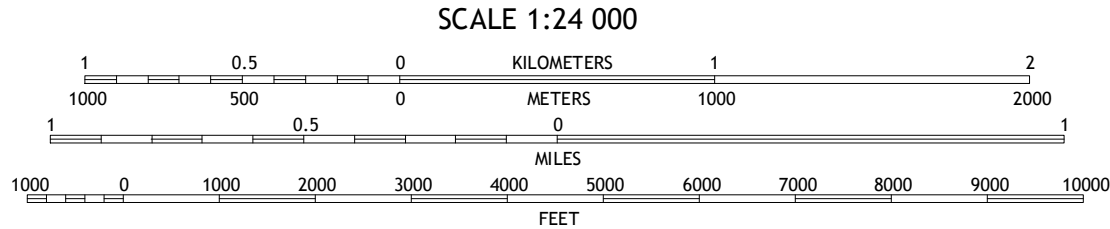
Produced by the United States Geological Survey
North American Datum of 1983 (NAD83)
World Geodetic System of 1984 (WGS84). Projection and
1000-meter grid: Universal Transverse Mercator, Zone 17R
10 000-foot ticks: Florida Coordinate System of 1983 (west and
east zones)

This map is not a legal document. Boundaries may be
generalized for this map scale. Private lands within government
reservations may not be shown. Obtain permission before
entering private lands.

Imagery.....NAIP, October 2013
Roads.....HERE, ©2013 - 2014
Names.....GMS, 2015
Hydrography.....National Hydrography Dataset, 2015
Contours.....National Elevation Dataset, 2009
Boundaries.....Multiple sources; see metadata file 1972 - 2015
Public Land Survey System.....BLM, 2015

UTM GRID AND 2015 MAGNETIC NORTH
DECLINATION AT CENTER OF SHEET

U.S. National Grid
100,000-m Square ID
MM
Grid Zone Designation
17R



CONTOUR INTERVAL 5 FEET
NORTH AMERICAN VERTICAL DATUM OF 1988
This map was produced to conform with the
National Geospatial Program US Topo Product Standard, 2011.
A metadata file associated with this product is draft version 0.6.18



QUADRANGLE LOCATION

1	2	3	1 Clay Sink
4	5	6	2 Bay Lake
7	8	9	3 Lake Nellie
			4 Branchborough
			5 Poyner
			6 Socum
			7 Providence
			8 Polk City

ADJOINING QUADRANGLES

ROAD CLASSIFICATION

Expressway
Secondary Hwy
Ramp
Interstate Route
Local Connector
Local Road
4WD
US Route
State Route

ROCK RIDGE, FL
2015

