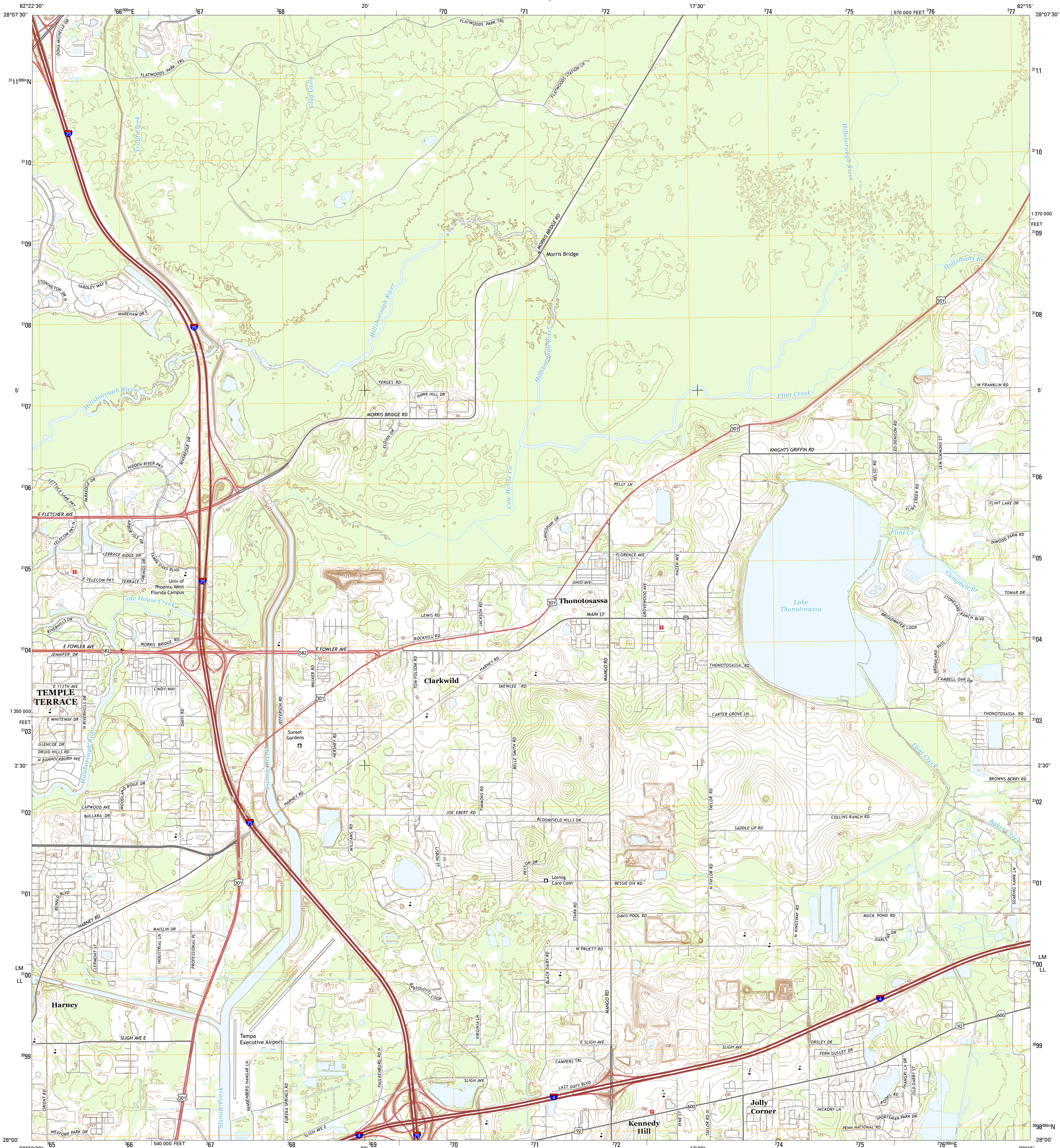




U.S. DEPARTMENT OF THE INTERIOR
U.S. GEOLOGICAL SURVEY



THONOTOSASSA QUADRANGLE
FLORIDA-HILLSBOROUGH CO.
7.5-MINUTE SERIES



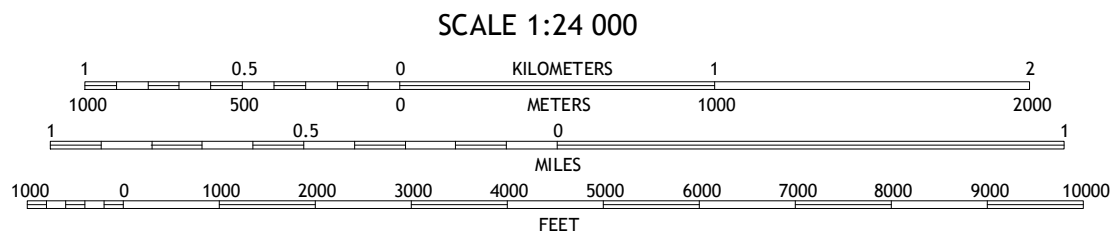
Produced by the United States Geological Survey
North American Datum of 1983 (NAD83)
World Geodetic System of 1984 (WGS84), Projection and
1 000-meter grid: Universal Transverse Mercator, Zone 17R
10 000-foot ticks: Florida Coordinate System of 1983 (west zone)

This map is not a legal document. Boundaries may be
generalized for this map scale. Private lands within government
reservations may not be shown. Obtain permission before
entering private lands.

Imagery.....NAIP, August 2013
Roads.....HERE, ©2013 - 2014
Names.....National Hydrography Dataset, 2013
Hydrography.....National Elevation Dataset, 2012
Contours.....Multiple sources; see metadata file 1972 - 2015
Boundaries.....BLM, 2015

UTM GRID AND 2015 MAGNETIC NORTH
DECLINATION AT CENTER OF SHEET

U.S. National Grid
100,000-m Square ID
LM 7100
LL
Grid Zone Designation
17R



CONTOUR INTERVAL 5 FEET
NORTH AMERICAN VERTICAL DATUM OF 1988
This map was produced to conform with the
National Geospatial Program US Topo Product Standard, 2011.
A metadata file associated with this product is draft version 0.6.18



QUADRANGLE LOCATION

ROAD CLASSIFICATION

Expressway	Local Connector
Secondary Hwy	Local Road
Ramp	4WD
Interstate Route	US Route
	State Route

ADJOINING QUADRANGLES

1	2	3
4	5	6
7	8	

1 Lutz
2 Wesley Chapel
3 Zephyrhills
4 Sulphur Springs
5 Plant City West
6 Tampa
7 Brandon
8 Dover

THONOTOSASSA, FL
2015

