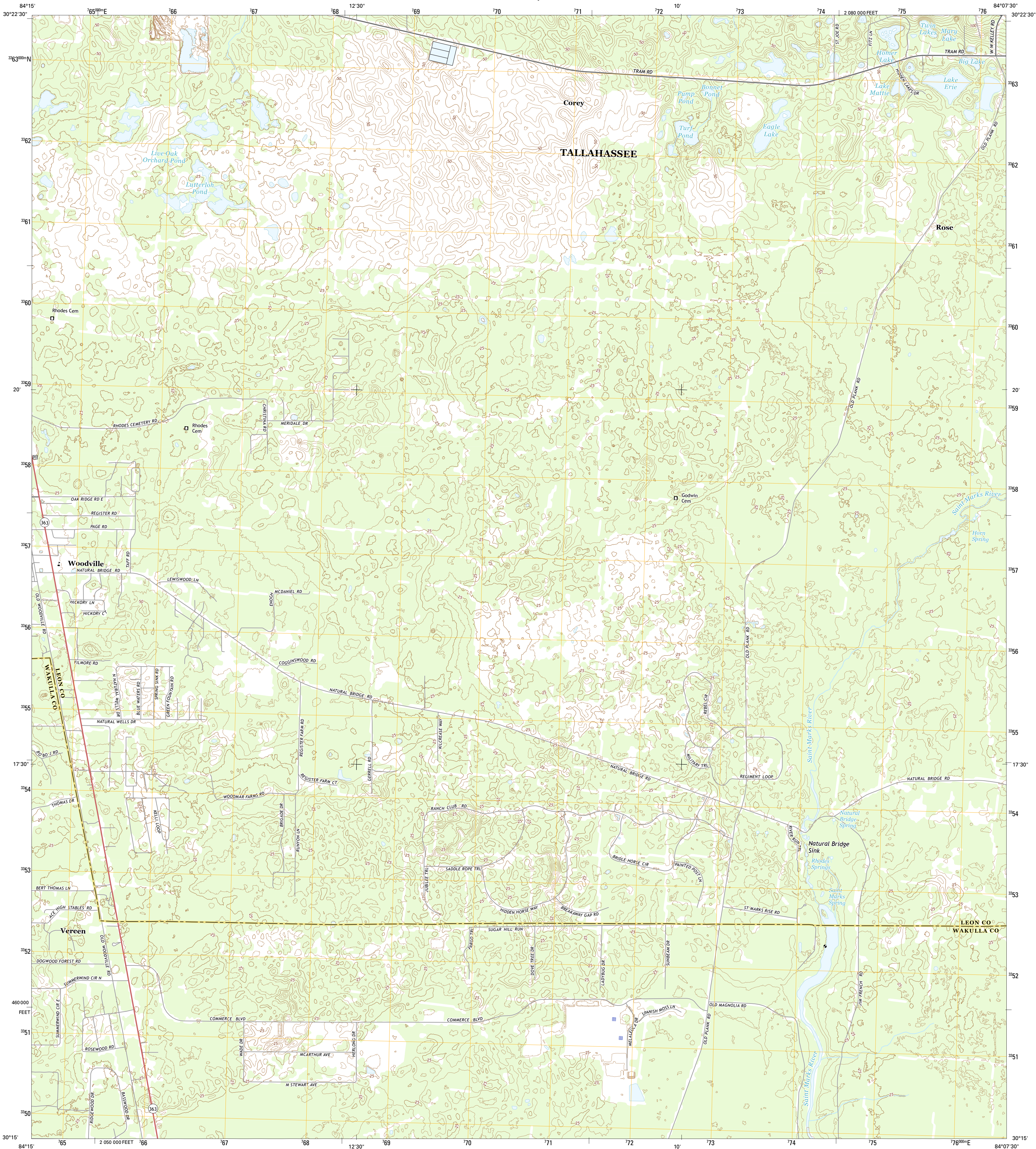




U.S. DEPARTMENT OF THE INTERIOR
U.S. GEOLOGICAL SURVEY



WOODVILLE QUADRANGLE
FLORIDA
7.5-MINUTE SERIES



Produced by the United States Geological Survey
North American Datum of 1983 (NAD83)
World Geodetic System of 1984 (WGS84) Projection and
1000-meter grid: Universal Transverse Mercator, Zone 16R
10 000-foot ticks: Florida Coordinate System of 1983 (north
zone)

This map is not a legal document. Boundaries may be
generalized for this map scale. Private lands within government
reservations may not be shown. Obtain permission before
entering private lands.

Imagery.....NAIP, October 2013
Roads.....HERE, ©2013 - 2014
Names.....GNIS, 2015
Hydrography.....National Hydrography Dataset, 2013
Contours.....National Elevation Dataset, 2012
Boundaries.....Multiple sources; see metadata file 1972 - 2015
Public Land Survey System.....BLM, 2015

UTM GRID AND 2015 MAGNETIC NORTH
DECLINATION AT CENTER OF SHEET

4° 31' N
80 MILS

1° 25' N
25 MILS

U.S. National Grid
100,000-m Square ID
GU
Grid Zone Designation
16R

SCALE 1:24 000

1 0.5 0 0.5 1 2
1000 500 0 500 1000 2000
KILOMETERS

1 0.5 0 0.5 1 2
1000 500 0 500 1000 2000
METERS

1 0 1000 2000 3000 4000 5000 6000 7000 8000 9000 10000
MILES

1 0 1000 2000 3000 4000 5000 6000 7000 8000 9000 10000
FEET

CONTOUR INTERVAL 5 FEET
NORTH AMERICAN VERTICAL DATUM OF 1988

This map was produced to conform with the
National Geospatial Program US Topo Product Standard, 2011.
A metadata file associated with this product is draft version 0.6.18



QUADRANGLE LOCATION

ROAD CLASSIFICATION

Expressway
Secondary Hwy
Ramp

Local Connector
Local Road
4WD

Interstate Route
US Route
State Route

ADJOINING QUADRANGLES

1	2	3
4	5	6
7	8	9

1 Tallahassee
2 Lafayette
3 Lloyd
4 Lake Munson
5 Cody
6 Crawfordville East
7 Saint Marks
8 Saint Marks NE

WOODVILLE, FL
2015

