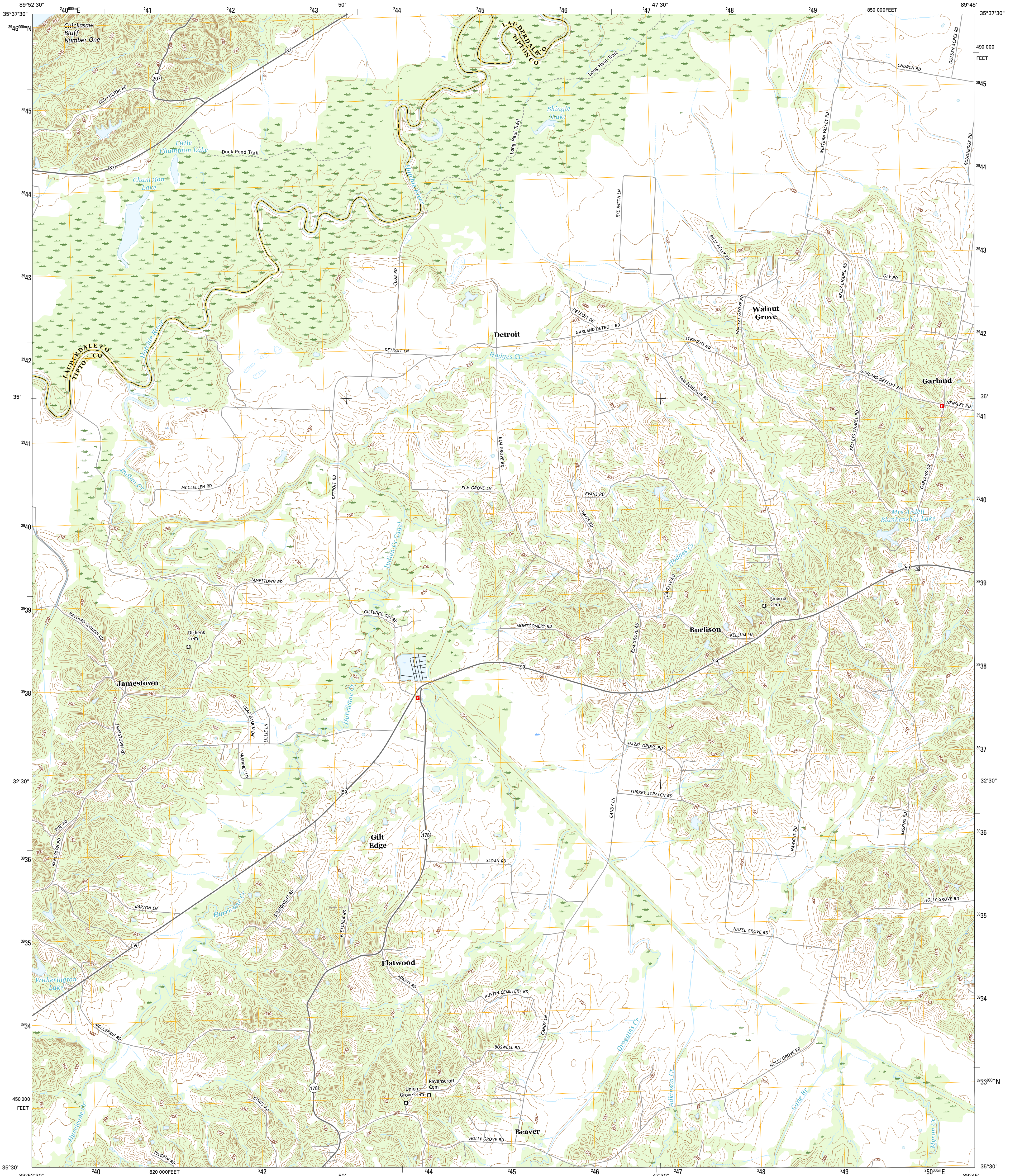




U.S. DEPARTMENT OF THE INTERIOR  
U.S. GEOLOGICAL SURVEY



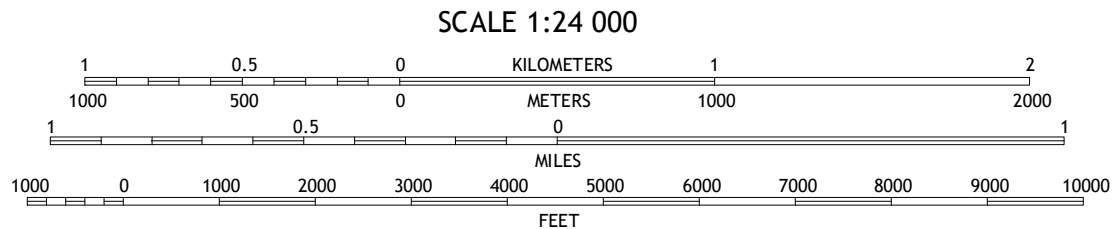
GILT EDGE QUADRANGLE  
TENNESSEE  
7.5-MINUTE SERIES



Produced by the United States Geological Survey  
North American Datum of 1983 (NAD83)  
Roads.....U.S. Census Bureau, 2015 - 2016  
Names.....GNIS, 2016  
Hydrography.....National Hydrography Dataset, 2014  
Contours.....National Elevation Dataset, 2001  
Boundaries.....Multiple sources; see metadata file 1972 - 2016  
Wetlands.....FWS National Wetlands Inventory 1977 - 2014

UTM GRID AND 2015 MAGNETIC NORTH DECLINATION AT CENTER OF SHEET

U.S. National Grid
100,000-m Square ID
BE
Grid Zone Designation
16S



CONTOUR INTERVAL 10 FEET  
NORTH AMERICAN VERTICAL DATUM OF 1988

This map was produced to conform with the  
National Geospatial Program US Topo Product Standard, 2011.  
A metadata file associated with this product is draft version 0.6.19

ROAD CLASSIFICATION

Expressway  
Secondary Hwy  
Ramp

Local Connector  
Local Road  
4WD

Interstate Route  
US Route  
State Route

QUADRANGLE LOCATION

ADJOINING QUADRANGLES

1	2	3
4	5	6
7	8	9

1 Osceola  
2 Goldust  
3 Fort Pillow  
4 Nodena  
5 Covington  
6 Drummonds  
7 Munford  
8 Brighton

GILT EDGE, TN  
2016

