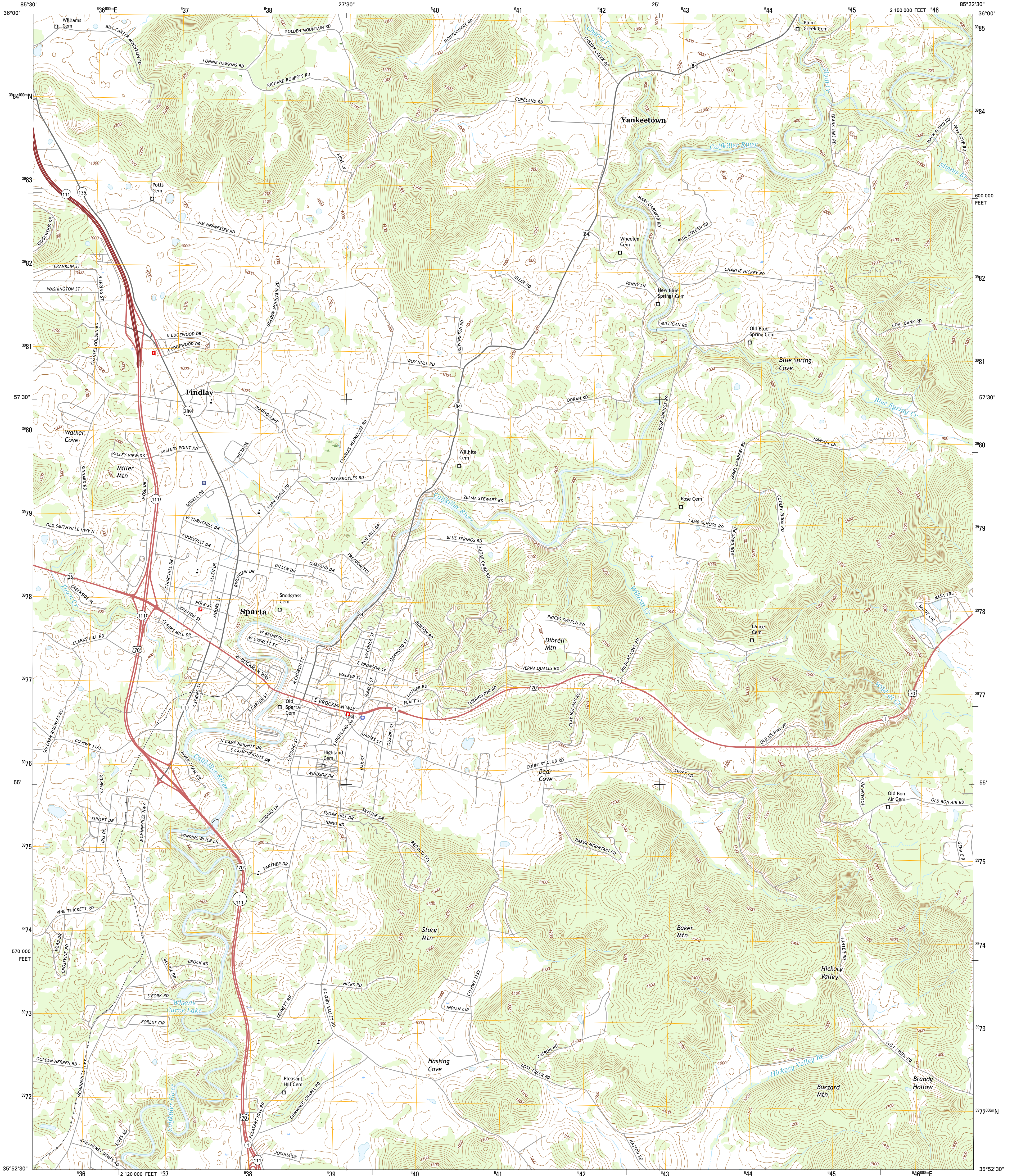




U.S. DEPARTMENT OF THE INTERIOR  
U.S. GEOLOGICAL SURVEY



SPARTA QUADRANGLE  
TENNESSEE-WHITE CO.  
7.5-MINUTE SERIES



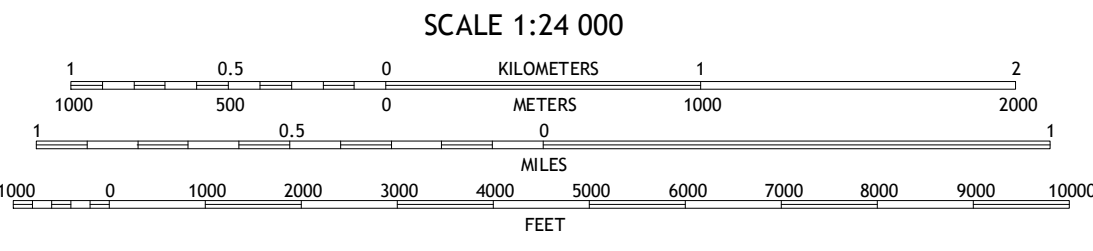
Produced by the United States Geological Survey  
North American Datum of 1983 (NAD83)  
World Geodetic System of 1984 (WGS84). Projection and  
10 000-foot ticks: Tennessee Coordinate System of 1983

This map is not a legal document. Boundaries may be  
generalized for this map scale. Private lands within government  
reservations may not be shown. Obtain permission before  
entering private lands.

Imagery.....NAIP, October 2014  
Roads.....U.S. Census Bureau, 2015 - 2016  
Names.....GNIS, 2016  
Hydrography.....National Hydrography Dataset, 2014  
Contours.....National Elevation Dataset, 1999  
Boundaries.....Multiple sources; see metadata file 1972 - 2016  
Wetlands.....FWS National Wetlands Inventory 1977 - 2014

UTM GRID AND 2016 MAGNETIC NORTH  
DECLINATION AT CENTER OF SHEET

|                       |
|-----------------------|
| U.S. National Grid    |
| 100,000-m Square ID   |
| FE                    |
| Grid Zone Designation |
| 16S                   |



CONTOUR INTERVAL 20 FEET  
NORTH AMERICAN VERTICAL DATUM OF 1988  
This map was produced to conform with the  
National Geospatial Program US Topo Product Standard, 2011.  
A metadata file associated with this product is draft version 0.6.19



QUADRANGLE LOCATION

|   |   |   |
|---|---|---|
| 1 | 2 | 3 |
| 4 | 5 | 6 |
| 7 | 8 | 9 |

1 Burgess Falls  
2 Dry Valley  
3 Monterey Lake  
4 Cassville  
5 De Rossett  
6 Doyle  
7 Bald Knob  
8 Lonesome

ROAD CLASSIFICATION  
Expressway  
Secondary Hwy  
Ramp  
Interstate Route  
US Route  
Local Connector  
Local Road  
4WD  
State Route

SPARTA, TN  
2016

