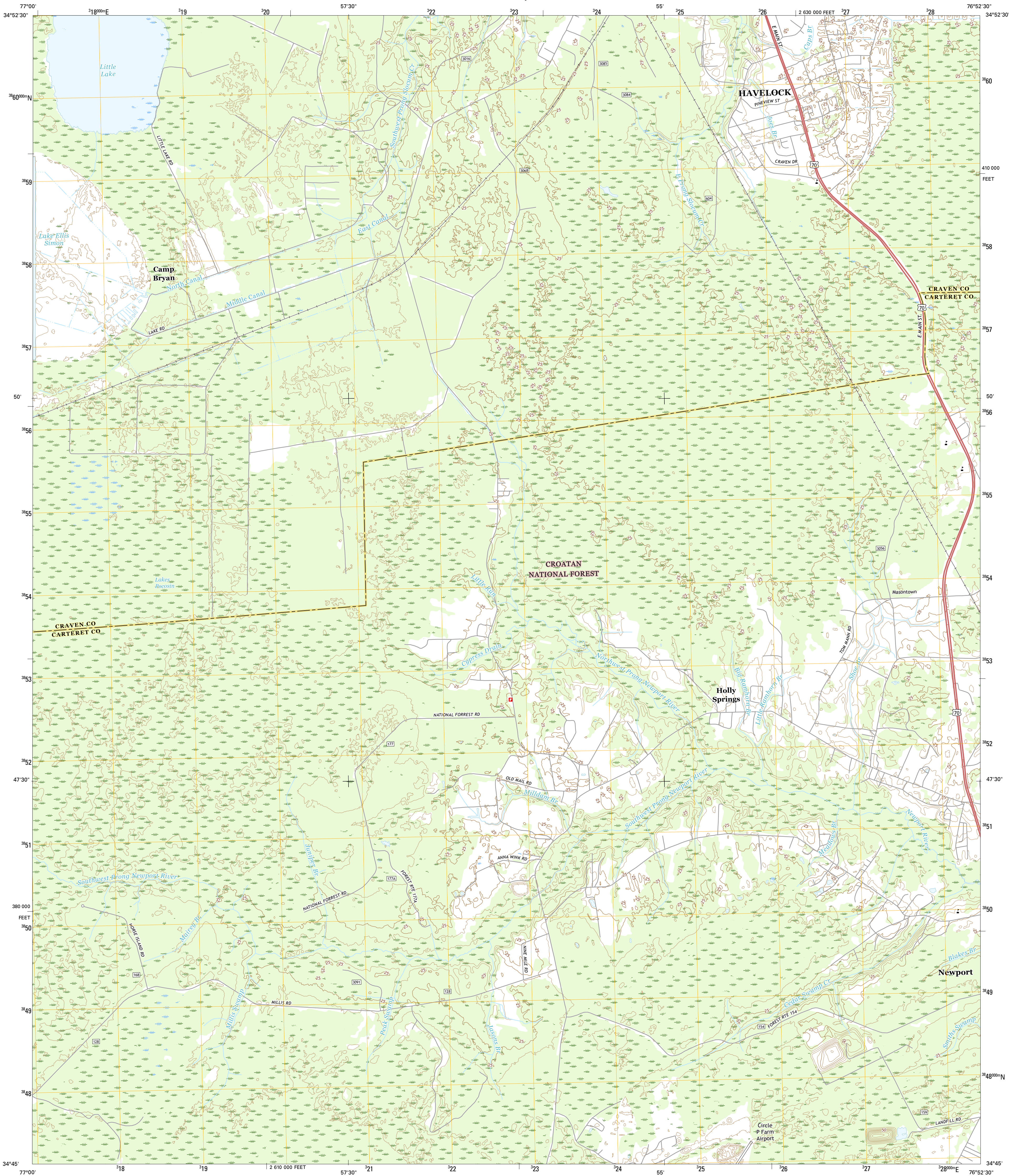




U.S. DEPARTMENT OF THE INTERIOR
U.S. GEOLOGICAL SURVEY



MASONTOWN QUADRANGLE
NORTH CAROLINA
7.5-MINUTE SERIES



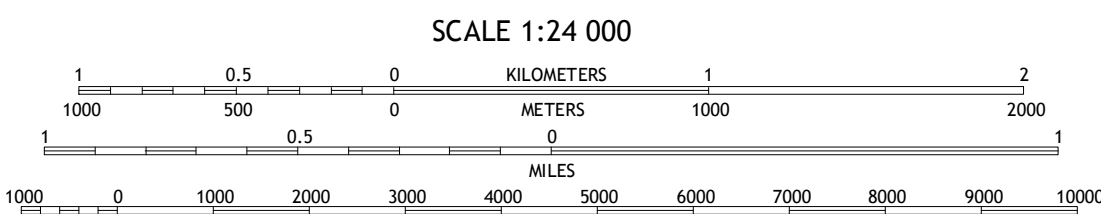
Produced by the United States Geological Survey
North American Datum of 1983 (NAD83)
World Geodetic System of 1984 (WGS84). Projection and
1000-meter grid: Universal Transverse Mercator, Zone 18S
10 000-foot ticks: North Carolina Coordinate System of 1983

This map is not a legal document. Boundaries may be
generalized for this map scale. Private lands within government
reservations may not be shown. Obtain permission before
entering private lands.

Imagery.....NAP, October 2014
Roads.....U.S. Census Bureau, 2015 - 2016
Roads within US Forest Service Lands.....FSTopo Data
with limited Forest Service updates, 2012 - 2016
Names.....GNIS, 2016
Hydrography.....National Hydrography Dataset, 2014
Contours.....National Elevation Dataset, 2015
Boundaries.....Multiple sources; see metadata file 1972 - 2016
Wetlands.....FWS National Wetlands Inventory 1977 - 2014

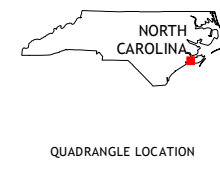
UTM GRID AND 2016 MAGNETIC NORTH
DECLINATION AT CENTER OF SHEET

U.S. National Grid 100,000-m Square ID
UD
Grid Zone Designation 18S



CONTOUR INTERVAL 5 FEET
NORTH AMERICAN VERTICAL DATUM OF 1988

This map was produced to conform with the
National Geospatial Program US Topo Product Standard, 2011.
A metadata file associated with this product is draft version 0.6.19



1	2	3
4	5	6
7	8	9

1 Catfish Lake
2 Havelock
3 Cherry Point
4 Hadnot Creek
5 Newport
6 Swansboro
7 Salter Path
8 Mansfield

Check with local Forest Service unit
for current travel conditions and restrictions.

MASONTOWN, NC
2016

