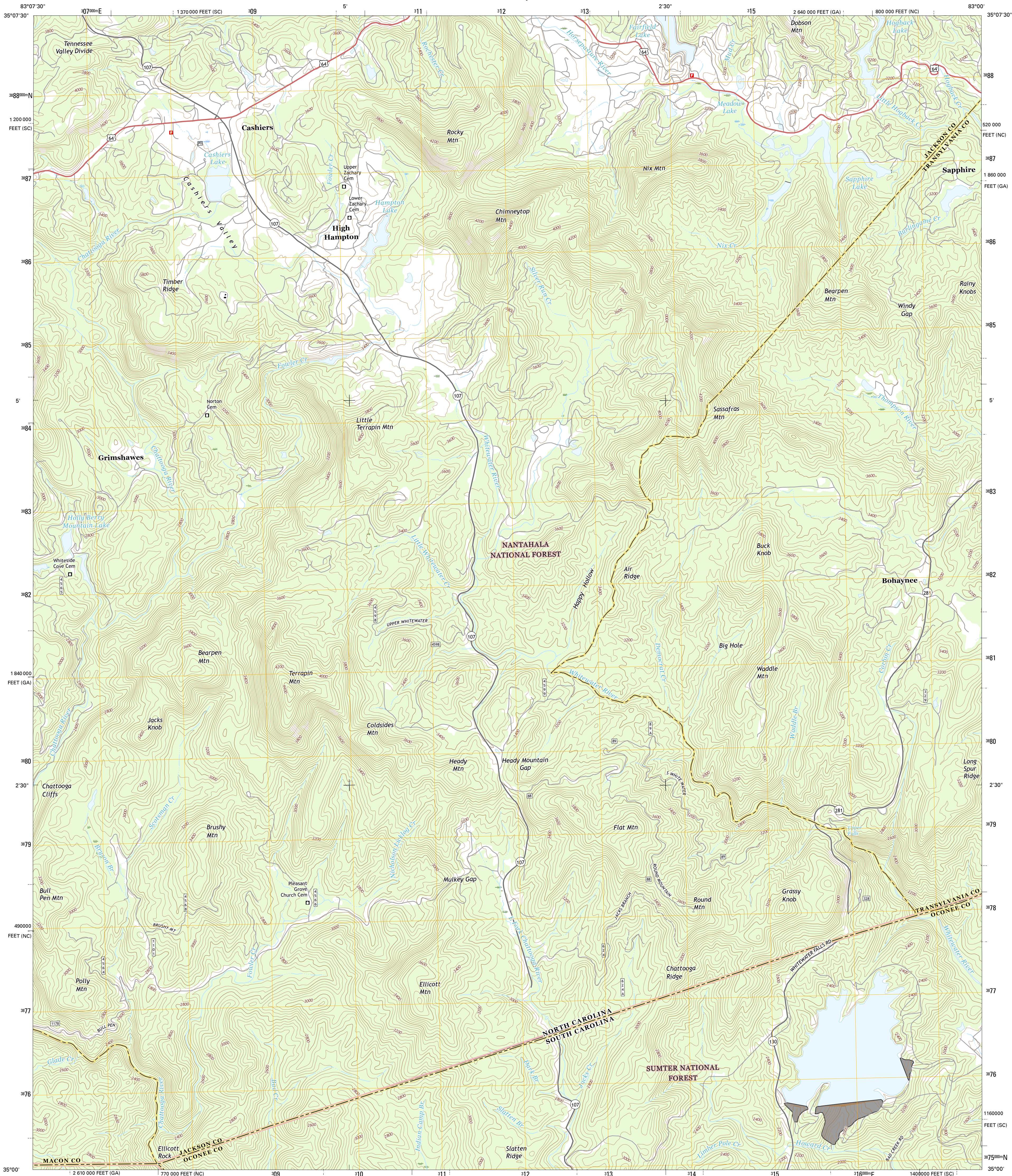




U.S. DEPARTMENT OF THE INTERIOR  
U.S. GEOLOGICAL SURVEY



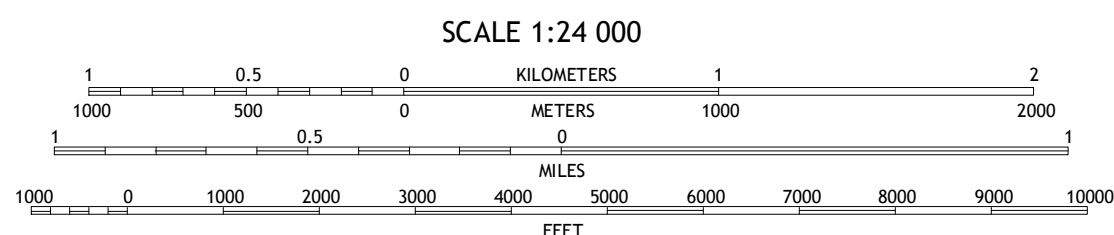
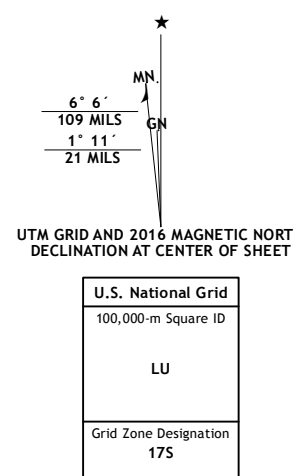
CASHIERS QUADRANGLE  
NORTH CAROLINA-SOUTH CAROLINA-GEORGIA  
7.5-MINUTE SERIES



Produced by the United States Geological Survey

North American Datum of 1983 (NAD83)  
World Geodetic System of 1984 (WGS84) Projection and  
1 000-meter grid; Universal Transverse Mercator, Zone 17S  
10 000-foot ticks: North Carolina Coordinate System of 1983,  
South Carolina Coordinate System of 1983, Georgia Coordinate  
System of 1983 (west zone)

This map is not a legal document. Boundaries may be  
generalized for this map scale. Private lands within government  
reservations may not be shown. Obtain permission before  
imagery.....NAIP, October 2013  
Roads.....U.S. Census Bureau, 2015 2016  
Roads within US Forest Service Lands.....FSTopo Data  
with limited Forest Service updates, 2012 2016  
Names.....GNIS, 2016  
Hydrography.....National Hydrography Dataset, 2013  
Contours.....National Elevation Dataset, 2010  
Boundaries.....Multiple sources; see metadata file 1972 2016  
Wetlands.....FWS National Wetlands Inventory 1977 - 2014



CONTOUR INTERVAL 40 FEET  
NORTH AMERICAN VERTICAL DATUM OF 1988

This map was produced to conform with the  
National Geospatial Program US Topo Product Standard, 2011.  
A metadata file associated with this product is draft version 0.6.19



1	2	3
4	5	6
7	8	9

- ROAD CLASSIFICATION
- Expressway
  - Secondary Hwy
  - Interstate Route
  - FS Primary Route
  - Local Connector
  - Local Road
  - 4WD
  - US Route
  - FS Passenger Route
  - State Route
  - FS High Clearance Route

Check with local Forest Service unit  
for current travel conditions and restrictions.

CASHIERS, NC-SC-GA  
2016

