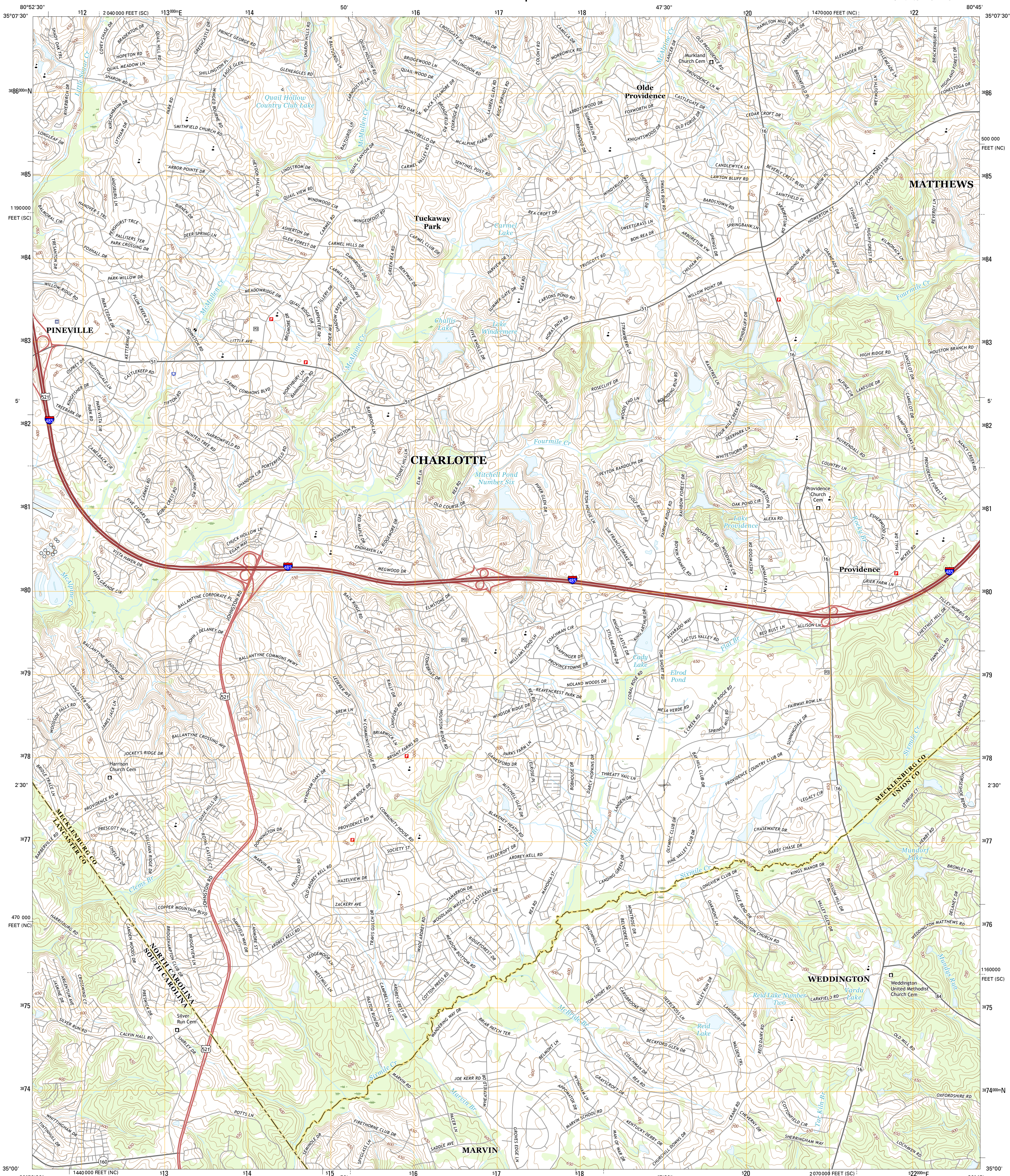




U.S. DEPARTMENT OF THE INTERIOR  
U.S. GEOLOGICAL SURVEY



WEDDINGTON QUADRANGLE  
NORTH CAROLINA-SOUTH CAROLINA  
7.5-MINUTE SERIES

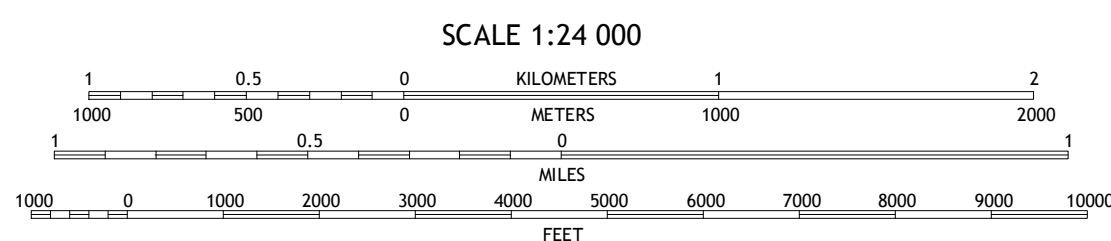
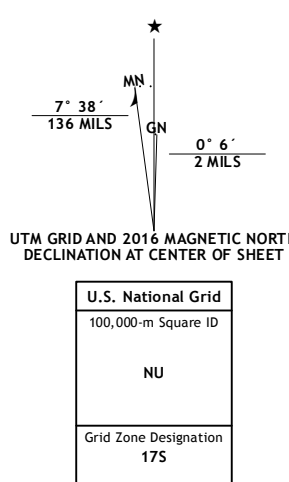


Produced by the United States Geological Survey

North American Datum of 1983 (NAD83)  
World Geodetic System of 1984 (WGS84), Projection and  
1 000-meter grid: Universal Transverse Mercator, Zone 17S  
10 000-foot ticks: North Carolina Coordinate System of 1983,  
South Carolina Coordinate System of 1983

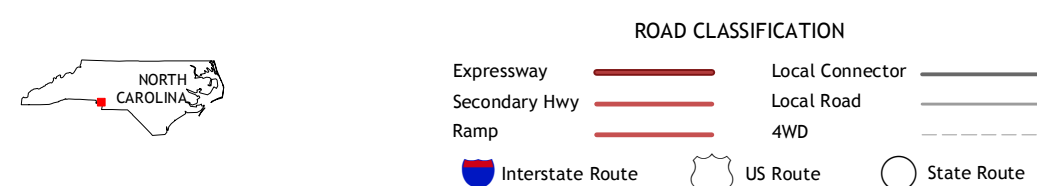
This map is not a legal document. Boundaries may be  
generalized for this map scale. Private lands within government  
reservations may not be shown. Obtain permission before  
entering private lands.

Imagery.....N.A.P. October 2013  
Roads.....U.S. Census Bureau, 2015 2016  
Names.....GNIS, 2016  
Hydrography.....National Hydrography Dataset, 2013  
Contours.....National Elevation Dataset, 2009  
Boundaries.....Multiple sources; see metadata file 1972 2016  
Wetlands.....FWS National Wetlands Inventory 1977 2014



CONTOUR INTERVAL 10 FEET  
NORTH AMERICAN VERTICAL DATUM OF 1988

This map was produced to conform with the  
National Geospatial Program US Topo Product Standard, 2011.  
A metadata file associated with this product is draft version 0.6.19



1	2	3
4	5	6
7	8	9

ADJOINING QUADRANGLES

1 Charlotte West  
2 Charlotte East  
3 Mini Hill  
4 Fort Mill  
5 Matthews  
6 Rock Hill East  
7 Catawba NE  
8 Waxhaw

WEDDINGTON, NC-SC  
2016

