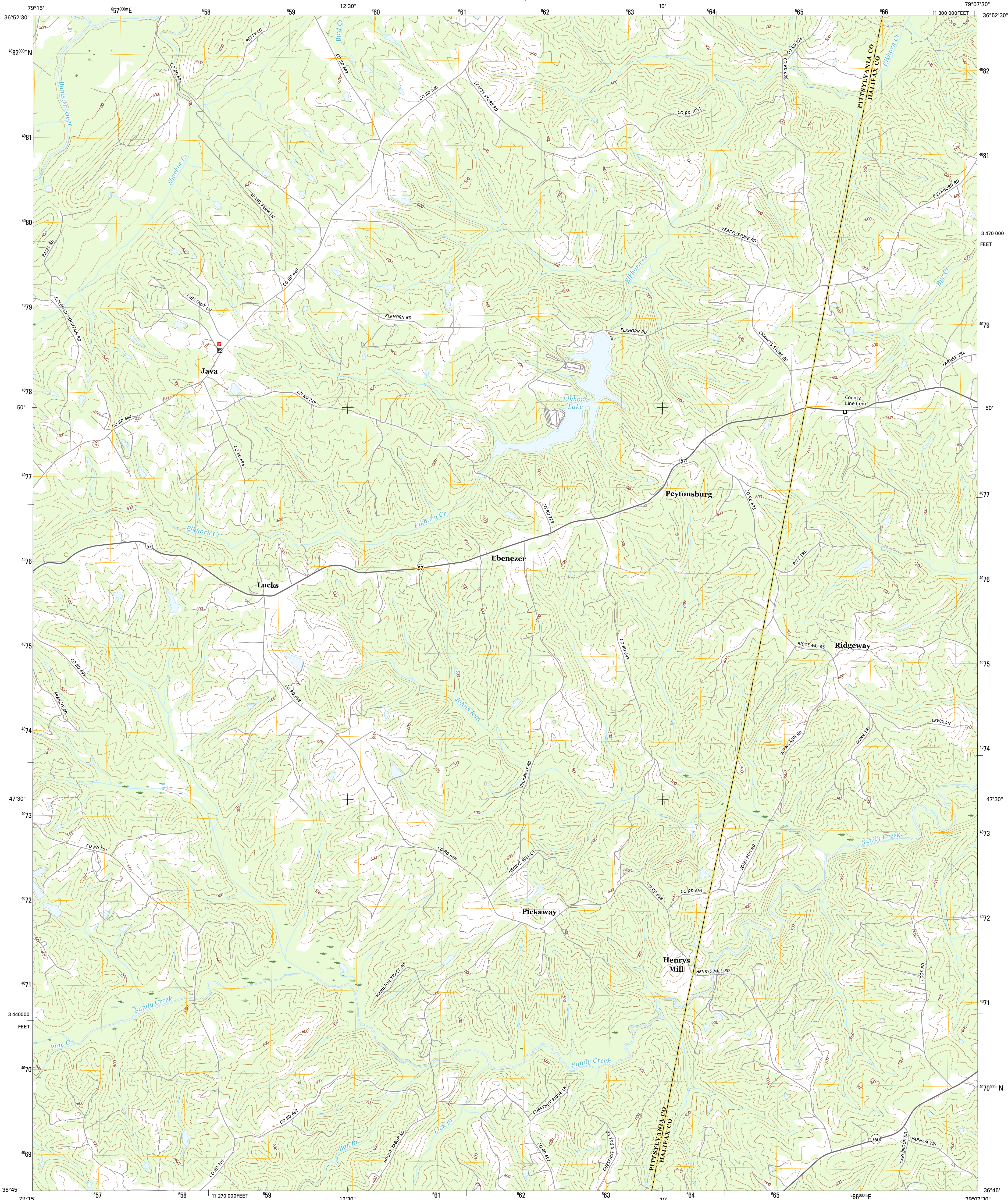




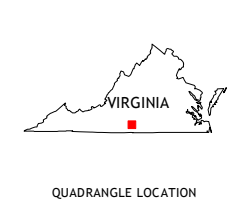
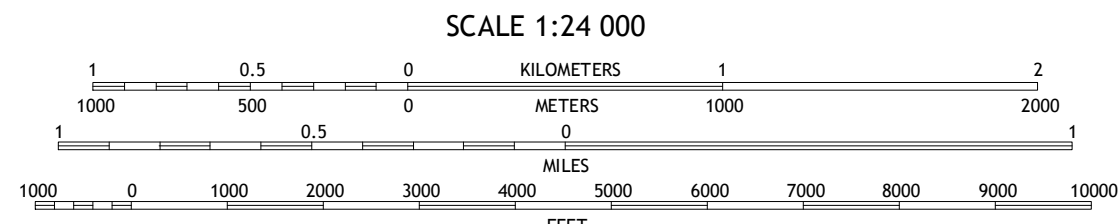
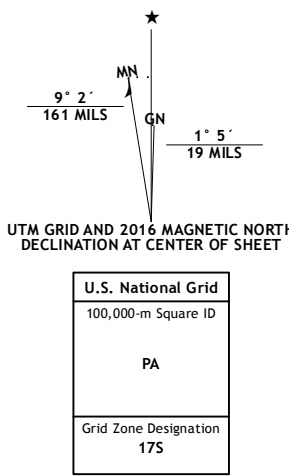
U.S. DEPARTMENT OF THE INTERIOR  
U.S. GEOLOGICAL SURVEY



JAVA QUADRANGLE  
VIRGINIA  
7.5-MINUTE SERIES



Produced by the United States Geological Survey  
North American Datum of 1983 (NAD83)  
World Geodetic System of 1984 (WGS84) Projection and  
1 000-meter grid: Universal Transverse Mercator, Zone 17S  
10 000-foot ticks: Virginia Coordinate System of 1983 (south zone)  
  
This map is not a legal document. Boundaries may be generalized for this map scale. Private lands within government reservations may not be shown. Obtain permission before entering private lands.  
  
Imagery.....NAIP, July 2014  
Roads.....U.S. Census Bureau, 2015 - 2016  
Names.....GNIS, 2016  
Hydrography.....National Hydrography Dataset, 2014  
Contours.....National Elevation Dataset, 2008  
Boundaries.....Multiple sources; see metadata file 1972 - 2016  
  
Wetlands.....PWS National Wetlands Inventory 1977 - 2014



ROAD CLASSIFICATION			
Expressway	Local Connector	Interstate Route	US Route
Secondary Hwy	Local Road	State Route	
Ramp	4WD		

1	2	3
4	5	6
7	8	

- 1 Gretna
- 2 Mount Airy
- 3 Republican Grove
- 4 Spring Garden
- 5 Vernon Hill
- 6 Blairs
- 7 Ingram
- 8 Oak Level

JAVA, VA  
2016

