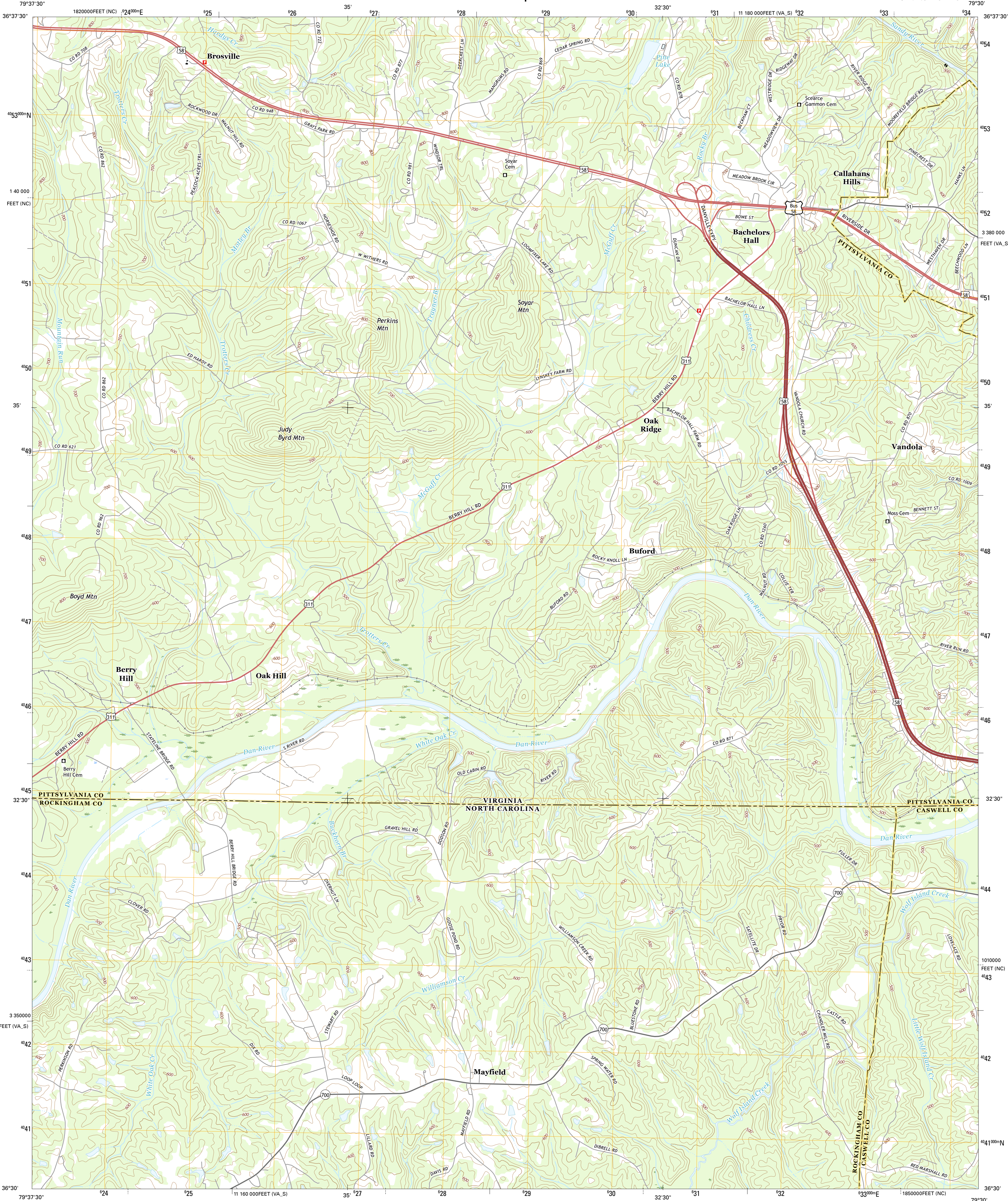




U.S. DEPARTMENT OF THE INTERIOR  
U.S. GEOLOGICAL SURVEY



BROSVILLE QUADRANGLE  
VIRGINIA-NORTH CAROLINA  
7.5-MINUTE SERIES

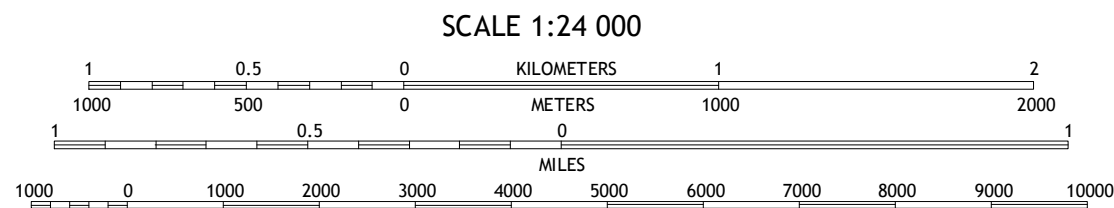
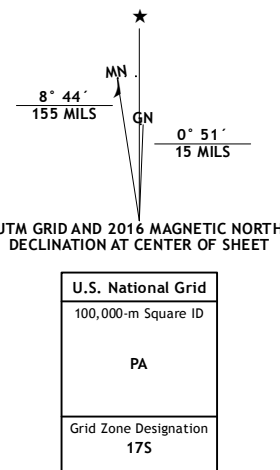


Produced by the United States Geological Survey  
North American Datum of 1983 (NAD83)  
World Geodetic System of 1984 (WGS84) - Projection and  
1 000-meter grid: Universal Transverse Mercator, Zone 17S  
10 000-foot ticks: Virginia Coordinate System of 1983 (south  
zone), North Carolina Coordinate System of 1983

This map is not a legal document. Boundaries may be  
generalized for this map scale. Private lands within government  
reservations may not be shown. Obtain permission before  
entering private lands.

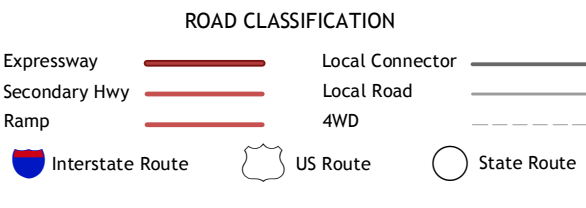
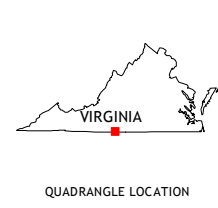
Images:.....N.A.P. July 2014  
Roads:.....U.S. Census Bureau, 2015 - 2016  
Names:.....GNIS, 2016  
Hydrography:.....National Hydrography Dataset, 2014  
Contours:.....National Elevation Dataset, 1999  
Boundaries:.....Multiple sources; see metadata file 1972 - 2016

Wetlands:.....FWS National Wetlands Inventory 1977 - 2014



CONTOUR INTERVAL 20 FEET  
NORTH AMERICAN VERTICAL DATUM OF 1988

This map was produced to conform with the  
National Geospatial Program US Topo Product Standard, 2011.  
A metadata file associated with this product is draft version 0.6.19



1	2	3
4	5	6
7	8	9

ADJOINING QUADRANGLES

1 Axton  
2 Whittemell  
3 Mount Herron  
4 Northeast Eden  
5 Danville  
6 Southeast Eden  
7 Ruffin  
8 Park Spring

BROSVILLE, VA-NC  
2016

