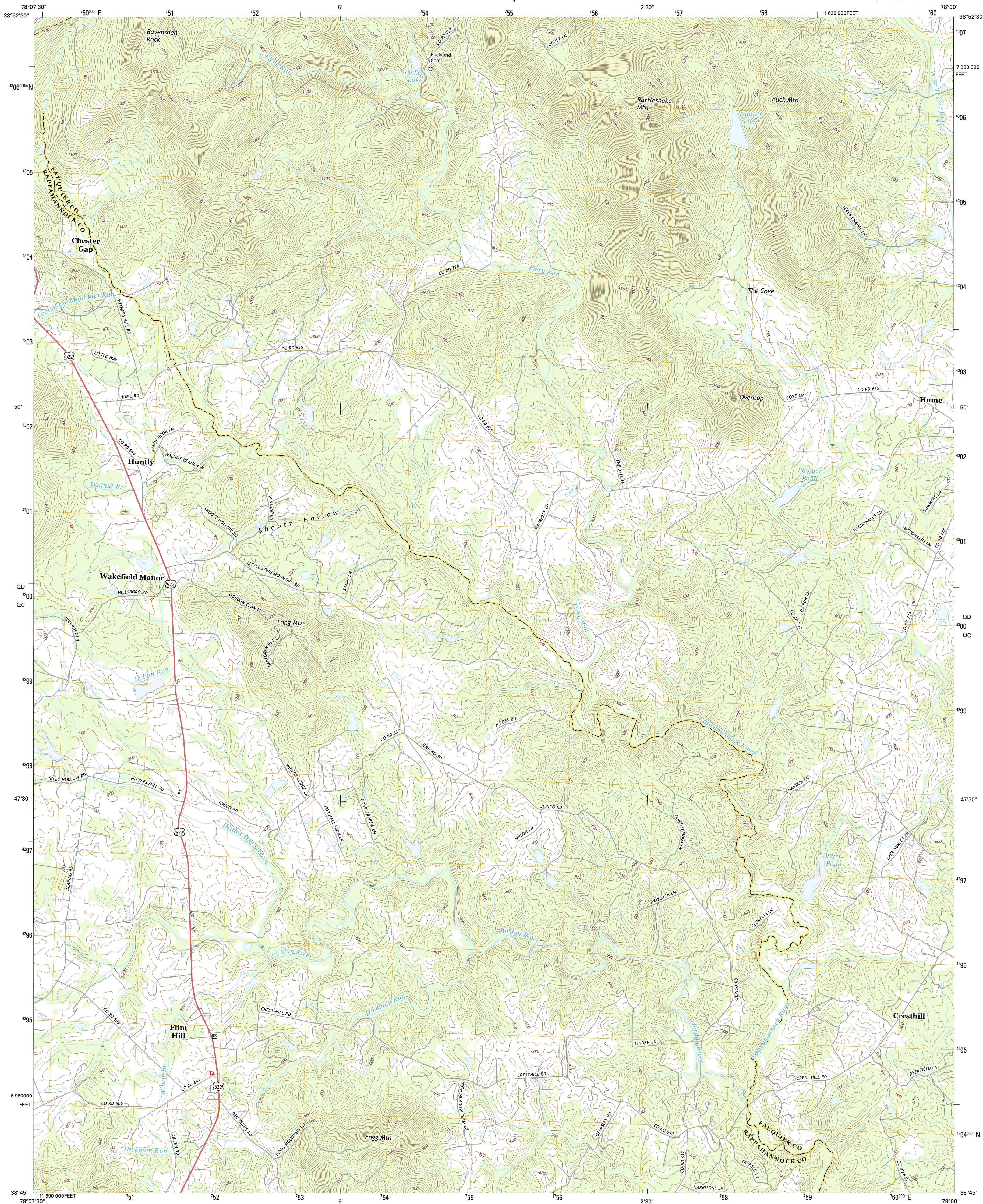




U.S. DEPARTMENT OF THE INTERIOR
U.S. GEOLOGICAL SURVEY



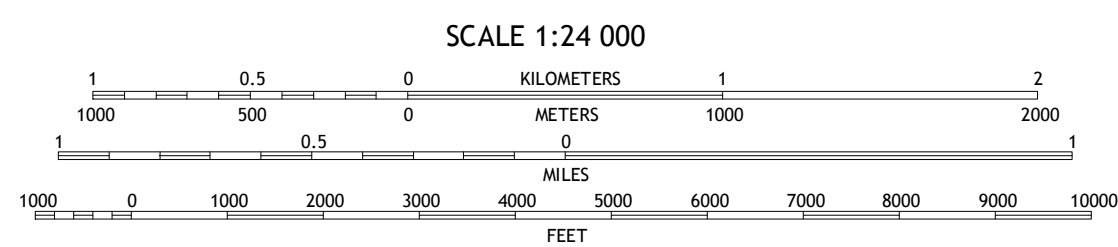
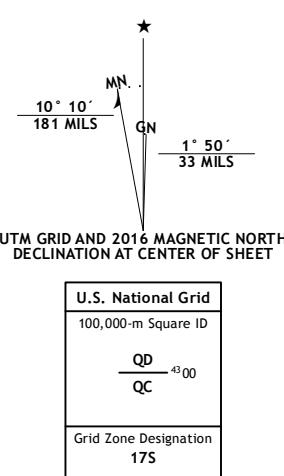
FLINT HILL QUADRANGLE
VIRGINIA
7.5-MINUTE SERIES



Produced by the United States Geological Survey
North American Datum of 1983 (NAD83)
World Geodetic System of 1984 (WGS84). Projection and
1 000-meter grid: Universal Transverse Mercator, Zone 17S
10 000-foot ticks: Virginia Coordinate System of 1983 (north
zone)

This map is not a legal document. Boundaries may be generalized for this map scale. Private lands within government reservations may not be shown. Obtain permission before entering private lands.

Imagery.....	NAIP, August	2014
Roads.....	U.S. Census Bureau,	2015 - 2016
Names.....	GNIS,	2016
Hydrography.....	National Hydrography Dataset,	2014
Contours.....	National Elevation Dataset,	2015
Boundaries.....	Multiple sources; see metadata file	1972 - 2016
Wetlands.....	FWS National Wetlands Inventory	1977 - 2014



CONTOUR INTERVAL 20 FEET
NORTH AMERICAN VERTICAL DATUM OF 1988

This map was produced to conform with the
National Geospatial Program US Topo Product Standard, 2011.
A metadata file associated with this product is draft version 0.6.19








QUADRANGLE LOCATION

1	2	3
4		5
6	7	8

1 Front Royal
 2 Linden
 3 Upperville
 4 Chester Gap
 5 Orlean
 6 Washington
 7 Massies Corner
 8 Jeffersonston

ADJOINING QUADRANGLE

ROAD CLASSIFICATION

Expressway  Local Connector 
Secondary Hwy Local Road
Ramp 4WD
 Interstate Route  US Route  State Route

FLINT HILL, VA
2016

