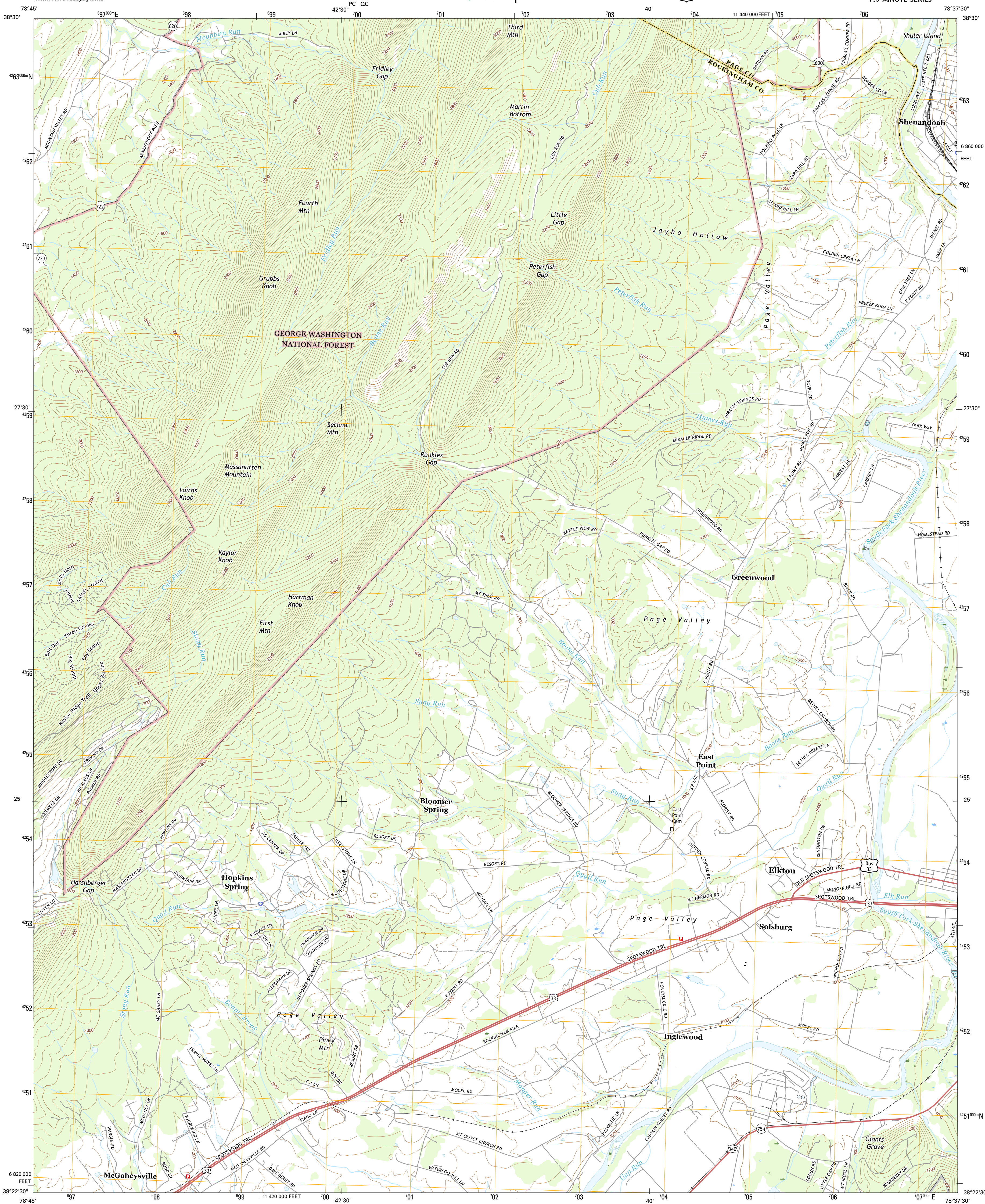




U.S. DEPARTMENT OF THE INTERIOR  
U.S. GEOLOGICAL SURVEY



ELKTON WEST QUADRANGLE  
VIRGINIA  
7.5-MINUTE SERIES

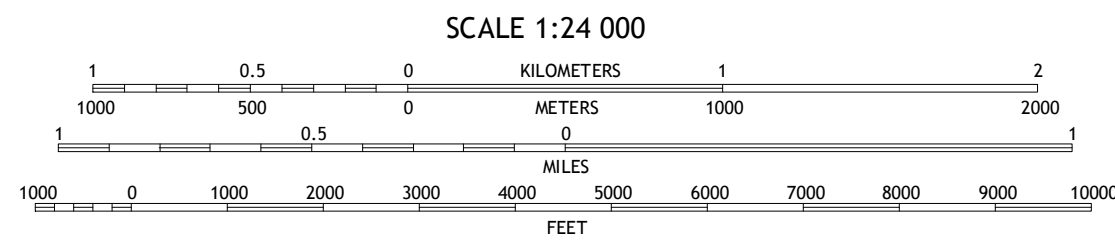
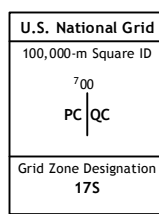
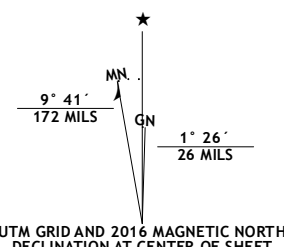


Produced by the United States Geological Survey

North American Datum of 1983 (NAD83)  
World Geodetic System of 1984 (WGS84), Projection and  
1 000-meter grid; Universal Transverse Mercator, Zone 17S  
10 000-foot ticks; Virginia Coordinate System of 1983 (north  
zone)

This map is not a legal document. Boundaries may be  
generalized for this map scale. Private lands within government  
reservations may not be shown. Obtain permission before  
entering private lands.

Imagery.....NAIP, August 2014  
Roads.....U.S. Census Bureau, 2015 - 2016  
Roads within US Forest Service Lands.....FSTopo Data  
with limited Forest Service updates, 2012 - 2016  
Names.....National Hydrography Dataset, 2014  
Hydrography.....National Elevation Dataset, 2014  
Contours.....National Elevation Dataset, 2002  
Boundaries.....Multiple sources; see metadata file 1972 - 2016  
Wetlands.....FWS National Wetlands Inventory 1977 - 2014



CONTOUR INTERVAL 40 FEET  
NORTH AMERICAN VERTICAL DATUM OF 1988  
This map was produced to conform with the  
National Geospatial Program US Topo Product Standard, 2011.  
A metadata file associated with this product is draft version 0.6.19



|   |   |   |
|---|---|---|
| 1 | 2 | 3 |
| 4 | 5 | 6 |
| 7 | 8 | 9 |

1 Broadway  
2 Tenth Legion  
3 Stanley  
4 Harrisonburg  
5 Elkton East  
6 Grottoes  
7 McGaheysville  
8 Swift Run Gap

| ROAD CLASSIFICATION |                         |
|---------------------|-------------------------|
| Expressway          | Local Connector         |
| Secondary Hwy       | Local Road              |
| Ramp                | 4WD                     |
| Interstate Route    | US Route                |
| FS Primary Route    | FS Passenger Route      |
|                     | State Route             |
|                     | FS High Clearance Route |

Check with local Forest Service unit  
for current travel conditions and restrictions.

ELKTON WEST, VA  
2016

