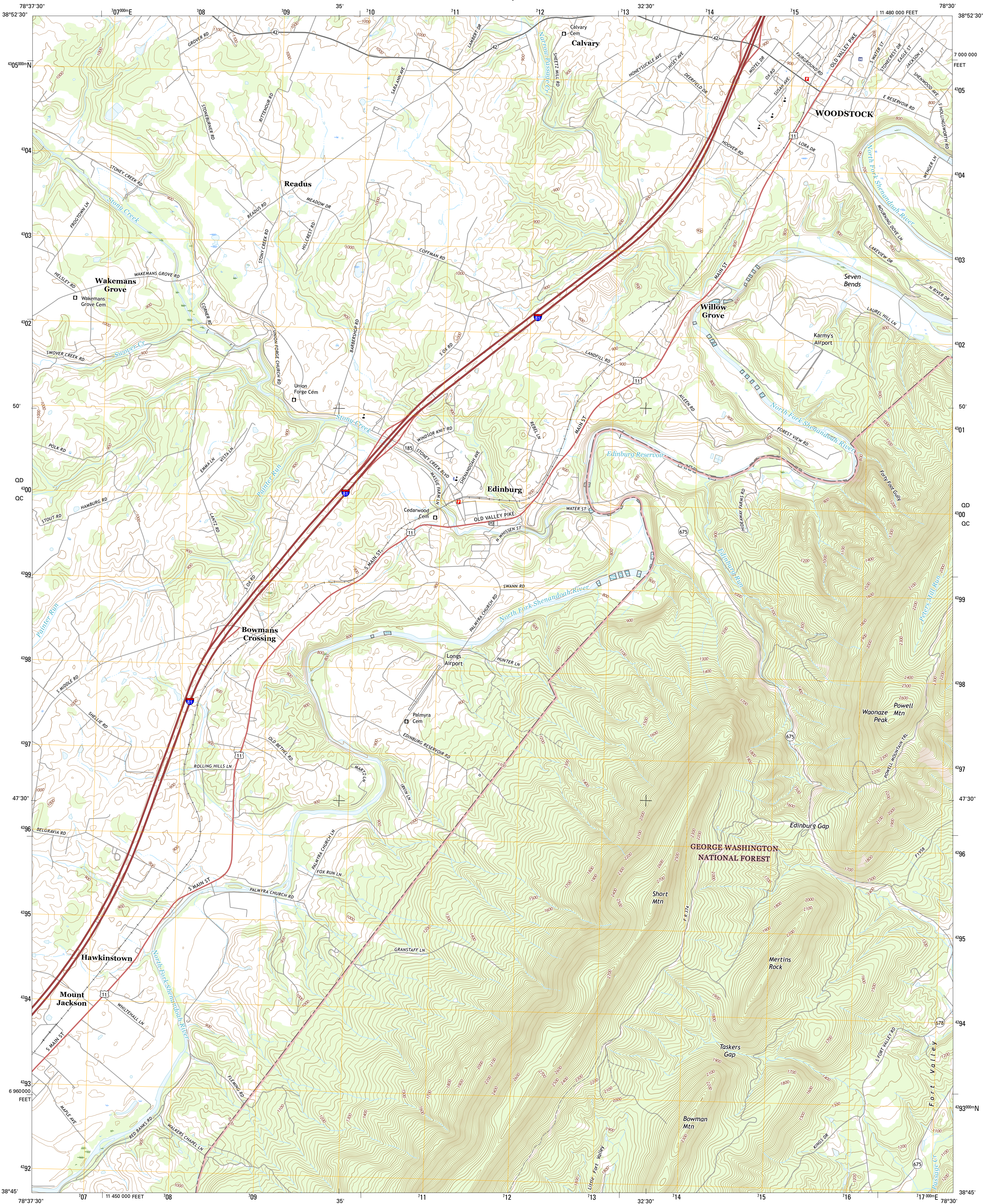




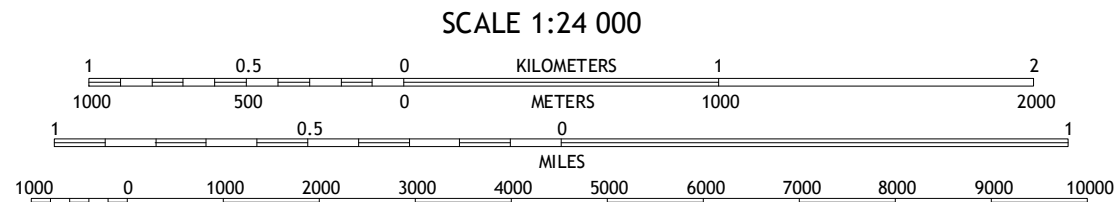
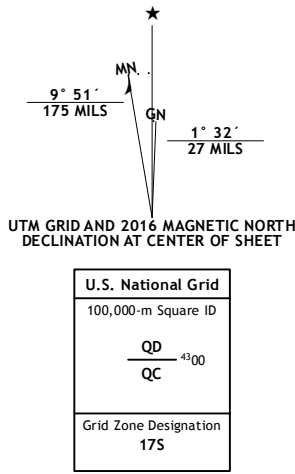
U.S. DEPARTMENT OF THE INTERIOR  
U.S. GEOLOGICAL SURVEY



EDINBURG QUADRANGLE  
VIRGINIA-SHENANDOAH CO.  
7.5-MINUTE SERIES



Produced by the United States Geological Survey  
North American Datum of 1983 (NAD83)  
World Geodetic System of 1984 (WGS84). Projection and  
1000-meter grid: Universal Transverse Mercator, Zone 17S  
10 000-foot ticks: Virginia Coordinate System of 1983 (north  
zone)  
This map is not a legal document. Boundaries may be  
generalized for this map scale. Private lands within government  
reservations may not be shown. Obtain permission before  
entering private lands.  
Imagery.....N.A.I.P., October 2014  
Roads.....U.S. Census Bureau, 2015 - 2016  
Roads within US Forest Service Lands.....FS Topo Data  
with limited Forest Service updates, 2012 - 2016  
Names.....National Hydrography Dataset, 2014  
Contours.....National Elevation Dataset, 2015  
Boundaries.....Multiple sources; see metadata file 1972 - 2016  
Wetlands.....FWS National Wetlands Inventory 1977 - 2014



CONTOUR INTERVAL 20 FEET  
NORTH AMERICAN VERTICAL DATUM OF 1988  
This map was produced to conform with the  
National Geospatial Program US Topo Product Standard, 2011.  
A metadata file associated with this product is draft version 0.6.19



1	2	3
4	5	6
7	8	9

1 Wolf Gap  
2 Woodstock  
3 Toms Brook  
4 Conterville  
5 Rileysville  
6 New Market  
7 Hamburg  
8 Luray

ROAD CLASSIFICATION  
Expressway  
Secondary Hwy  
Ramp  
Interstate Route  
FS Primary Route  
Local Connector  
Local Road  
4WD  
US Route  
FS Passenger Route  
State Route  
FS High Clearance Route

Check with local Forest Service unit  
for current travel conditions and restrictions.

EDINBURG, VA  
2016

