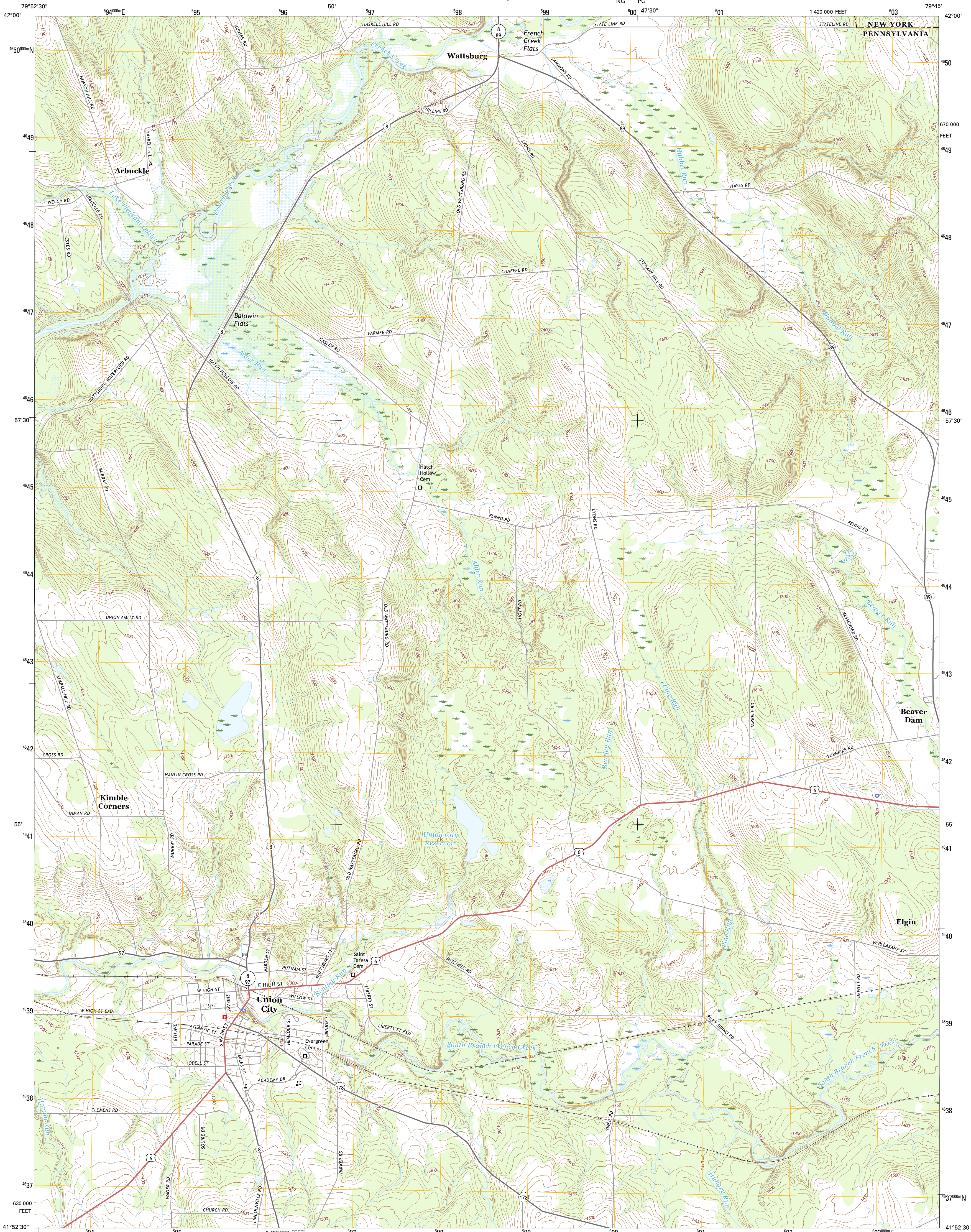




U.S. DEPARTMENT OF THE INTERIOR
U.S. GEOLOGICAL SURVEY



UNION CITY QUADRANGLE
PENNSYLVANIA-NEW YORK
7.5-MINUTE SERIES

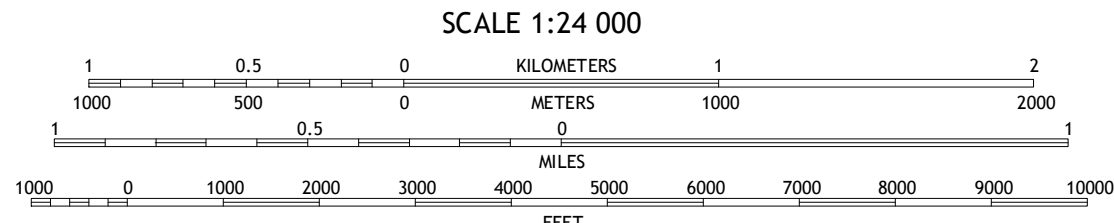
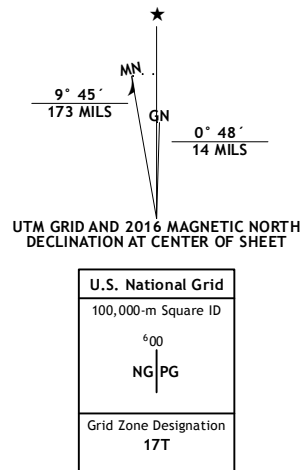


Produced by the United States Geological Survey
North American Datum of 1983 (NAD83)
World Geodetic System of 1984 (WGS84), Projection and
1 000-meter grid; Universal Transverse Mercator, Zone 17T
10 000-foot ticks; Pennsylvania Coordinate System of 1983
(north zone), New York Coordinate System of 1983 (west zone)

This map is not a legal document. Boundaries may be
generalized for this map scale. Private lands within government
reservations may not be shown. Obtain permission before
entering private lands.

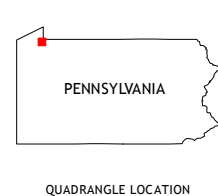
Imagery.....NAIP, June 2013
Roads.....U.S. Census Bureau, 2015 - 2016
Names.....GNIS, 2016
Hydrography.....National Hydrography Dataset, 2013
Contours.....National Elevation Dataset, 2010
Boundaries.....Multiple sources; see metadata file 1972-2016

Wetlands.....FWS National Wetlands Inventory 1977 - 2014



CONTOUR INTERVAL 10 FEET
NORTH AMERICAN VERTICAL DATUM OF 1988

This map was produced to conform with the
National Geospatial Program US Topo Product Standard, 2011.
A metadata file associated with this product is draft version 0.6.19



ROAD CLASSIFICATION			
Expressway	Local Connector	US Route	State Route
Secondary Hwy	Local Road		
Ramp	4WD		
Interstate Route			

1	2	3
4	5	6
7	8	9

ADJOINING QUADRANGLES

UNION CITY, PA-NY
2016

