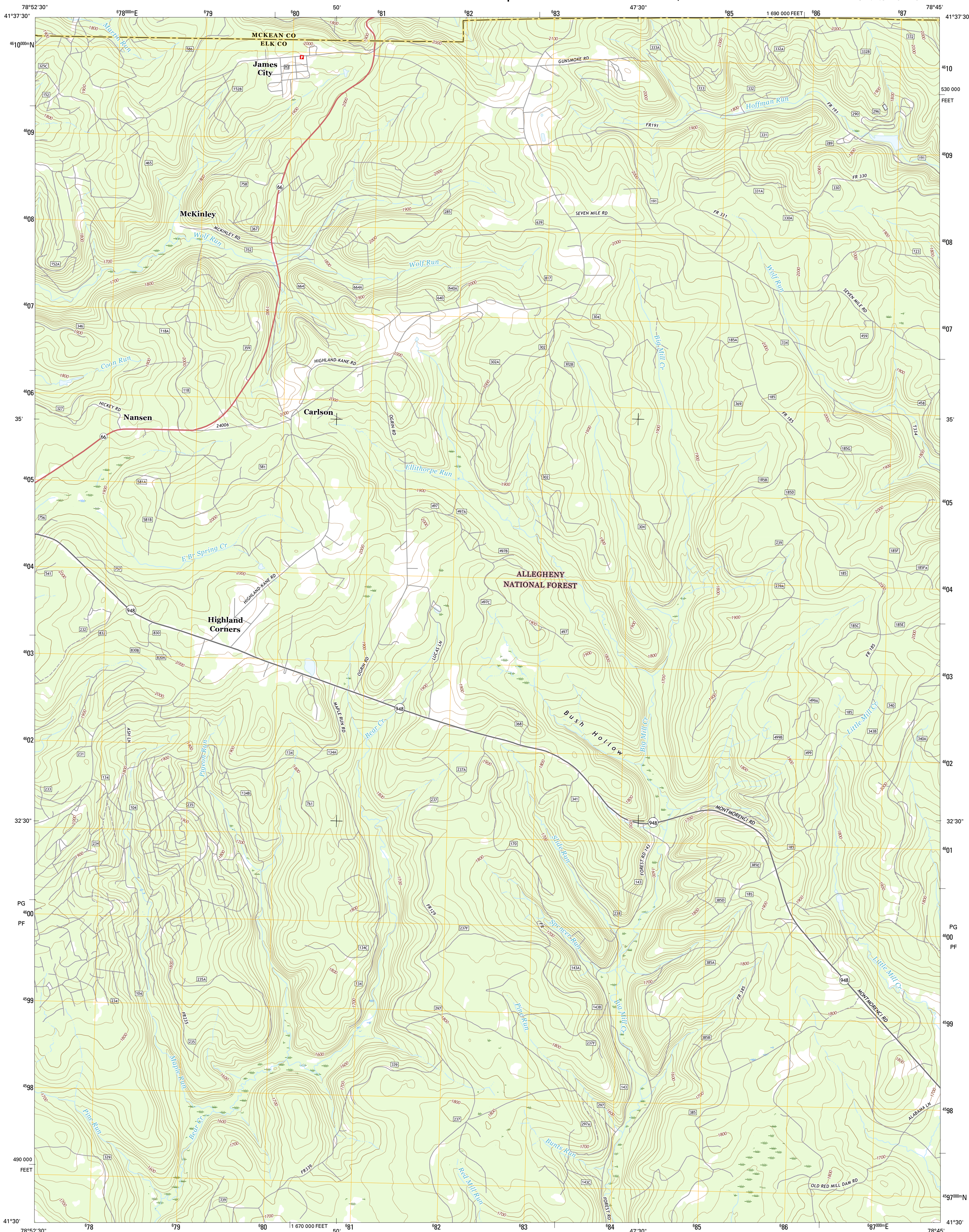




**JAMES CITY QUADRANGLE  
PENNSYLVANIA  
7.5-MINUTE SERIES**

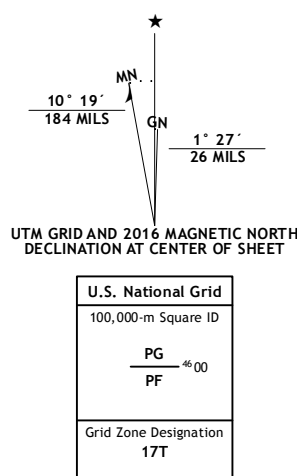


North American Datum of 1983 (NAD83)  
World Geodetic System of 1984 (WGS84). Projection and  
1 000-meter grid: Universal Transverse Mercator, Zone 17T  
10 000-foot ticks: Pennsylvania Coordinate System of 1983  
(north zone)

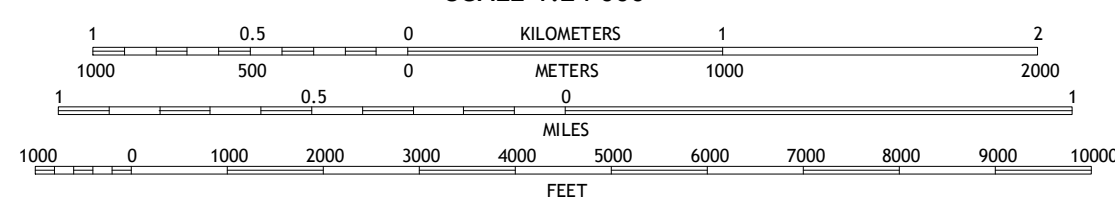
This map is not a legal document. Boundaries may be generalized for this map scale. Private lands within government reservations may not be shown. Obtain permission before entering private lands.

Imagery.....	NAIP, August 2001	21
Roads.....	U.S. Census Bureau, 2015	21
Roads within US Forest Service Lands.....	FSTopo with limited Forest Service updates, 2012	21
Names.....	GNIS	21
Hydrography.....	National Hydrography Dataset	21
Contours.....	National Elevation Dataset	21
Boundaries.....	Multiple sources: see metadata file 1972	21

Wetlands.....FWS National Wetlands Inventory 1977 - 2001

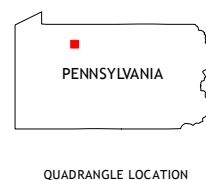


SCALE 1:24 000



CONTOUR INTERVAL 20 FEET  
NORTH AMERICAN VERTICAL DATUM OF 1988

This map was produced to conform with the  
National Geospatial Program US Topo Product Standard, 2011.  
A metadata file associated with this product is draft version 0.6.19



QUADRANGLE LOCATION

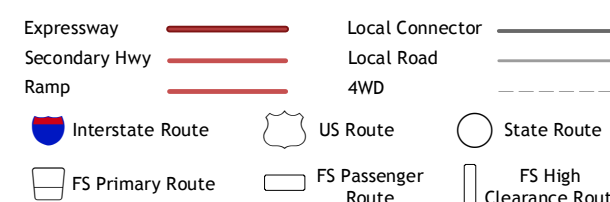
1	2	3	1 Ludlow
4		5	2 Kane
6	7	8	3 Mount Jewett

ADJOINING QUADRANGLES

- 4 Russell City
- 5 Wilcox
- 6 Halton
- 7 Portland Mills
- 8 Ridgway

ADJOINING QUADRANGLES

## ROAD CLASSIFICATION



Check with local Forest Service unit  
for current travel conditions and restrictions.

JAMES CITY, PA  
2016

