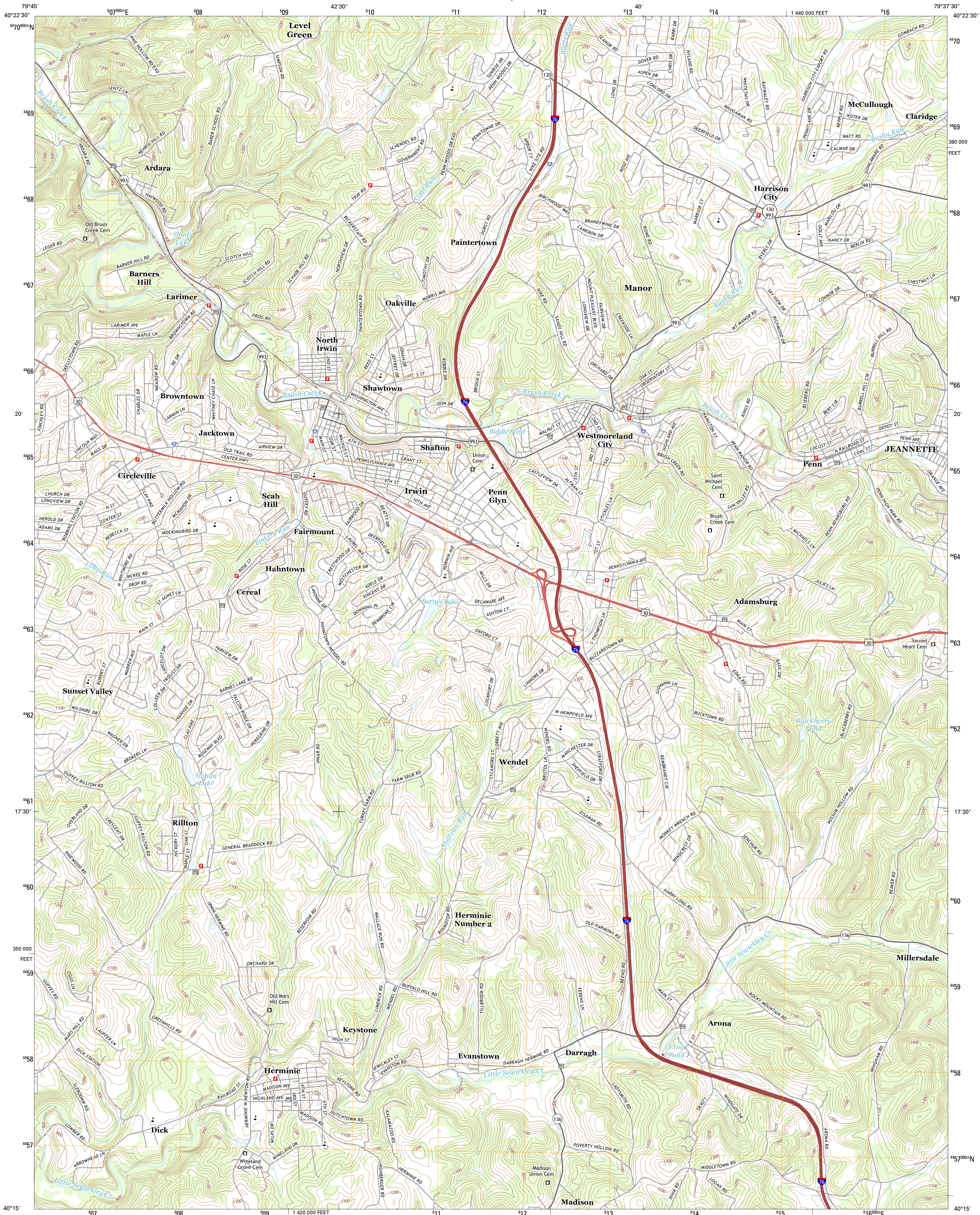




U.S. DEPARTMENT OF THE INTERIOR  
U.S. GEOLOGICAL SURVEY

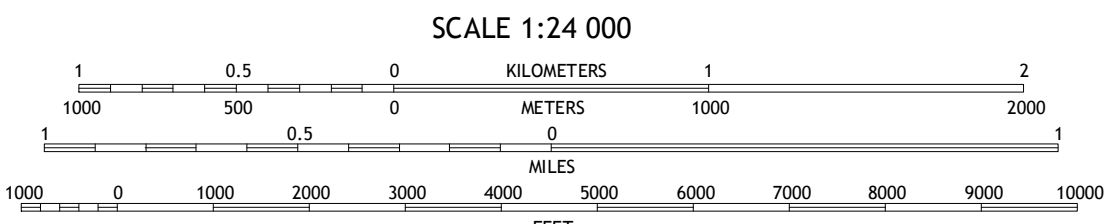


IRWIN QUADRANGLE  
PENNSYLVANIA-WESTMORELAND CO.  
7.5-MINUTE SERIES

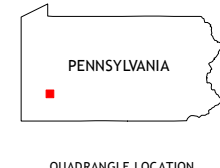


Produced by the United States Geological Survey  
North American Datum of 1983 (NAD83)  
World Geodetic System of 1984 (WGS84) - Projection and  
100-meter grid: Universal Transverse Mercator, Zone 17T  
10 000-foot ticks: Pennsylvania Coordinate System of 1983  
(south zone)  
  
This map is not a legal document. Boundaries may be  
generalized for this map scale. Private lands within government  
reservations may not be shown. Obtain permission before  
entering private lands.  
  
Imagery.....NAIP, June 2013  
Roads.....U.S. Census Bureau, 2015 - 2016  
Names.....GNIS, 2016  
Hydrography.....National Hydrography Dataset, 2013  
Contours.....National Elevation Dataset, 2010  
Boundaries.....Multiple sources; see metadata file 1972 - 2016  
  
Wetlands.....FWS National Wetlands Inventory 1977 - 2014

UTM GRID AND 2016 MAGNETIC NORTH  
DECLINATION AT CENTER OF SHEET  
  
U.S. National Grid  
100,000-m Square ID  
  
PE  
  
Grid Zone Designation  
17T



CONTOUR INTERVAL 20 FEET  
NORTH AMERICAN VERTICAL DATUM OF 1988  
  
This map was produced to conform with the  
National Geospatial Program US Topo Product Standard, 2011.  
A metadata file associated with this product is draft version 0.6.19



QUADRANGLE LOCATION

1	2	3
4	5	6
7	8	9

ADJOINING QUADRANGLES

1 Braddock  
2 Murrysville  
3 Slipville  
4 McKeesport  
5 Greensburg  
6 Donora  
7 Smithton  
8 Mount Pleasant

ROAD CLASSIFICATION  
  
Expressway  
Secondary Hwy  
Ramp  
Interstate Route  
Local Connector  
Local Road  
4WD  
US Route  
State Route

IRWIN, PA  
2016

