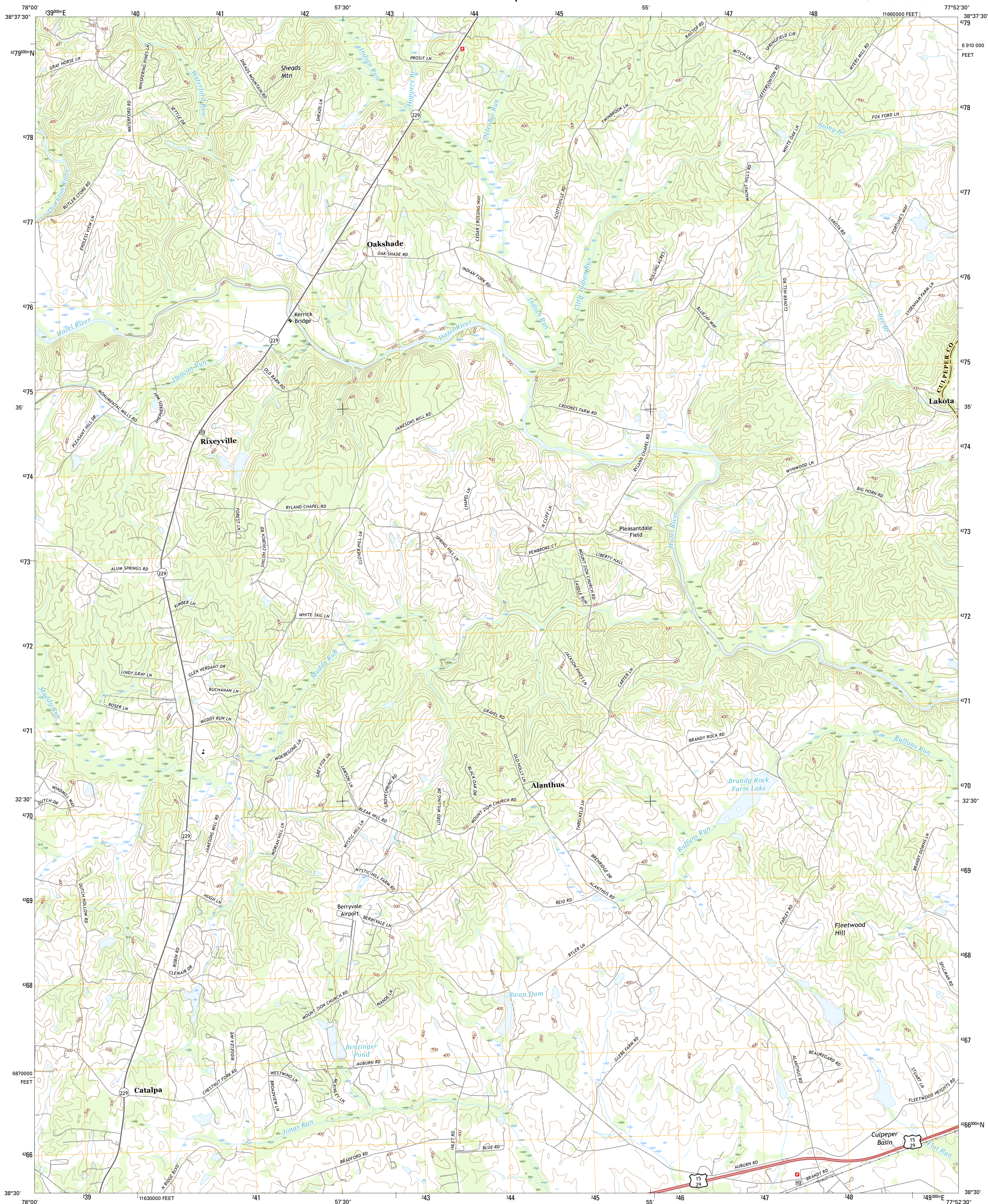




U.S. DEPARTMENT OF THE INTERIOR  
U.S. GEOLOGICAL SURVEY



BRANDY STATION QUADRANGLE  
VIRGINIA  
7.5-MINUTE SERIES



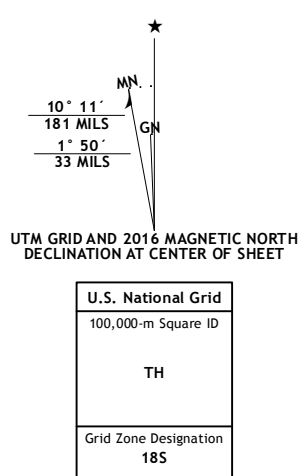
Produced by the United States Geological Survey

North American Datum of 1983 (NAD83)  
World Geodetic System of 1984 (WGS84). Projection and  
1 000-meter grid: Universal Transverse Mercator, Zone 18S  
10 000-foot ticks: Virginia Coordinate System of 1983 (north  
zone)

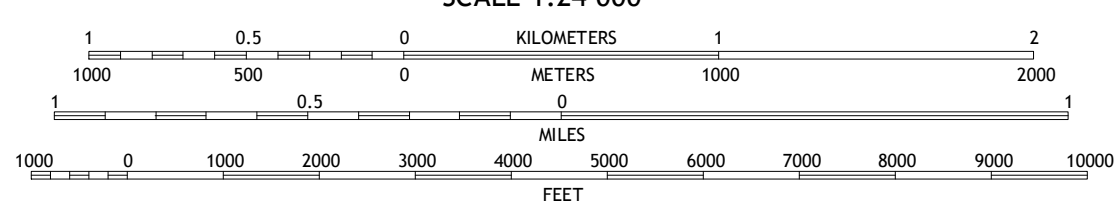
This map is not a legal document. Boundaries may be generalized for this map scale. Private lands within government reservations may not be shown. Obtain permission before entering private lands.

Imagery.....	NAIP, August 2001	20
Roads.....	U.S. Census Bureau, 2015	20
Names.....	GNIS	20
Hydrography.....	National Hydrography Dataset,	20
Contours.....	National Elevation Dataset,	20
Boundaries.....	Multiple sources; see metadata file 1972	20
Wetlands.....	FWS National Wetlands Inventory 1977	20

Wetlands.....FWS National Wetlands Inventory 1977 - 2014



SCALE 1:24 000



CONTOUR INTERVAL 20 FEET  
NORTH AMERICAN VERTICAL DATUM OF 1988

This map was produced to conform with the  
US Geospatial Program US Topo Product Standard  
A file associated with this product is draft version



QUADRANGLE LOCATION

1	2	3
4		5
6	7	8

ADJOINING QUADRANGLES

- Massies Corner
- Jeffersonton
- Warrenton
- Castleton
- Remington
- Culpeper West
- Culpeper East
- Germanna Bridge

ADJOINING QUADRANGLE

## ROAD CLASSIFICATION

Expressway      Local Connector  
Secondary Hwy      Local Road  
Ramp      4WD  
Interstate Route      US Route      State Route

BRANDY STATION, VA  
2016