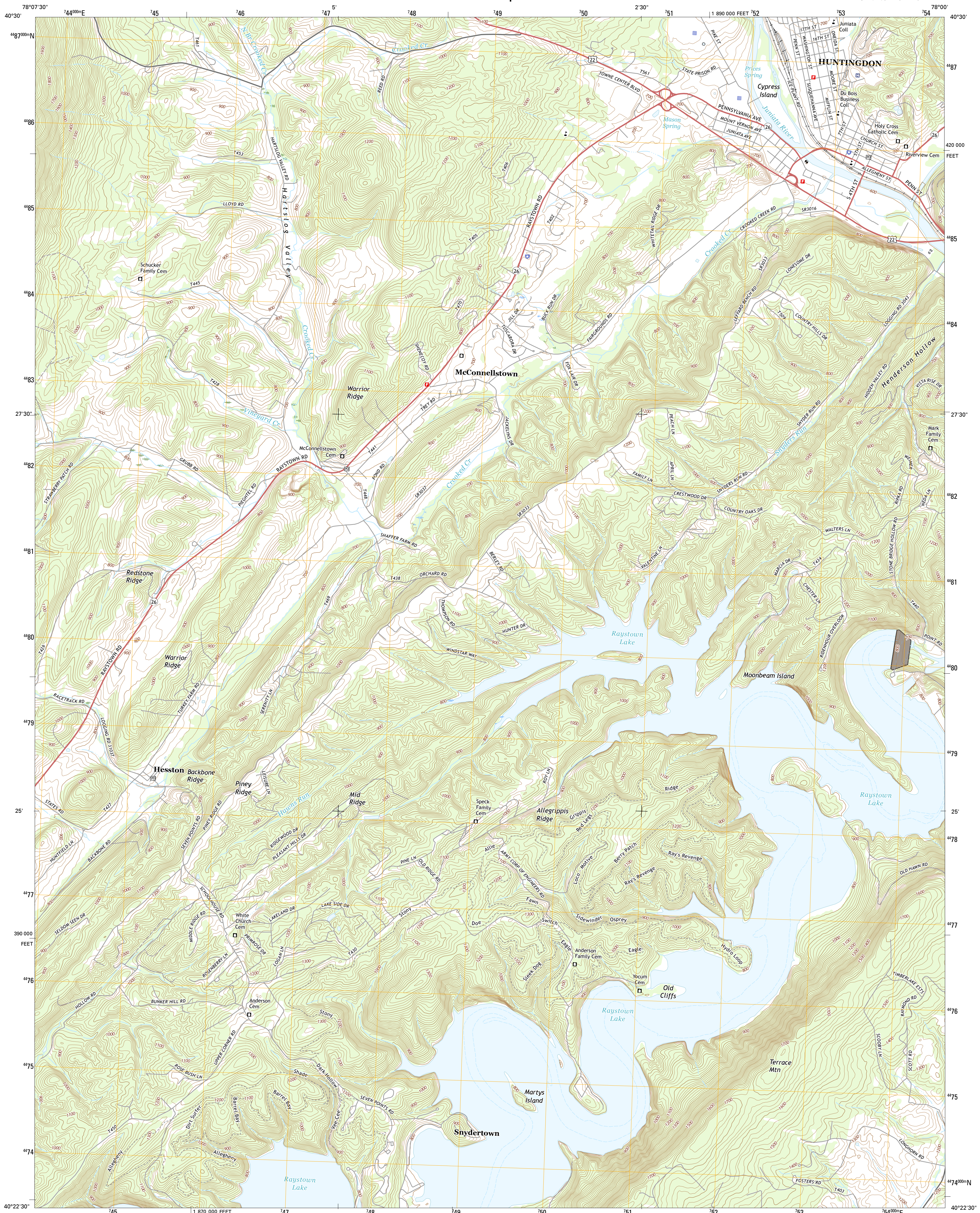




U.S. DEPARTMENT OF THE INTERIOR
U.S. GEOLOGICAL SURVEY



HUNTINGDON QUADRANGLE
PENNSYLVANIA-HUNTINGDON CO.
7.5-MINUTE SERIES



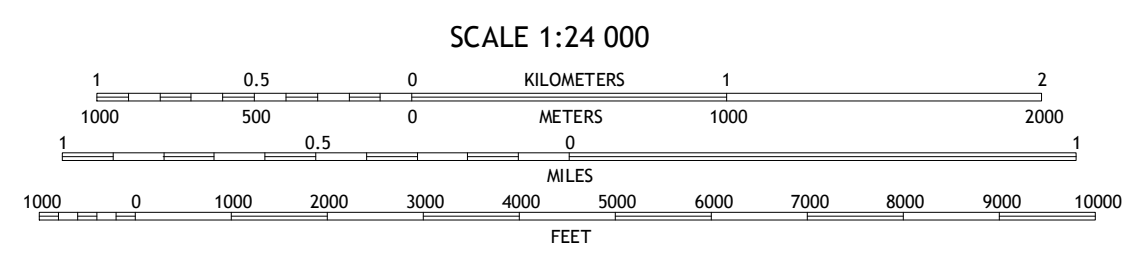
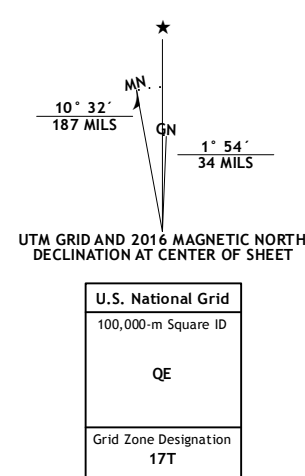
Produced by the United States Geological Survey

Northern Atlantic Datum of 1983 (NAD83)
World Geodetic System of 1984 (WGS84). Projection and
1 000-metre grid: Universal Transverse Mercator, Zone 17T
10 000-foot ticks: Pennsylvania Coordinate System of 1983
(south zone)

This map is not a legal document. Boundaries may be
generalized for this map scale. Private lands within government
reservations may not be shown. Obtain permission before
entering private lands.

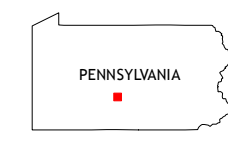
County.....NAIP, August 2015
State.....U.S. Census Bureau, 2015
Names.....GNIS,
Hydrography.....National Hydrography Dataset,
Contours.....National Elevation Dataset,
Boundaries.....Multiple sources; see metadata file 1972

Wetlands.....FWS National Wetlands Inventory 1977 -



CONTOUR INTERVAL 20 FEET
NORTH AMERICAN VERTICAL DATUM OF 1988

This map was produced to conform with the
National Geospatial Program US Topo Product Standard, 2011.
A metadata file associated with this product is draft version 0.6.19








1	2	3
4		5
6	7	8

ADJOINING QUADRANGLES

- 1 Spruce Creek
- 2 Alexandria
- 3 Donation
- 4 Williamsburg
- 5 Mount Union
- 6 Entri ken
- 7 Cassville
- 8 Butler Knob

ROAD CLASSIFICATION

Expressway		Local Connector	
Secondary Hwy		Local Road	
Ramp		4WD	

 Interstate Route  US Route  State Route

HUNTINGDON, PA
2016

