

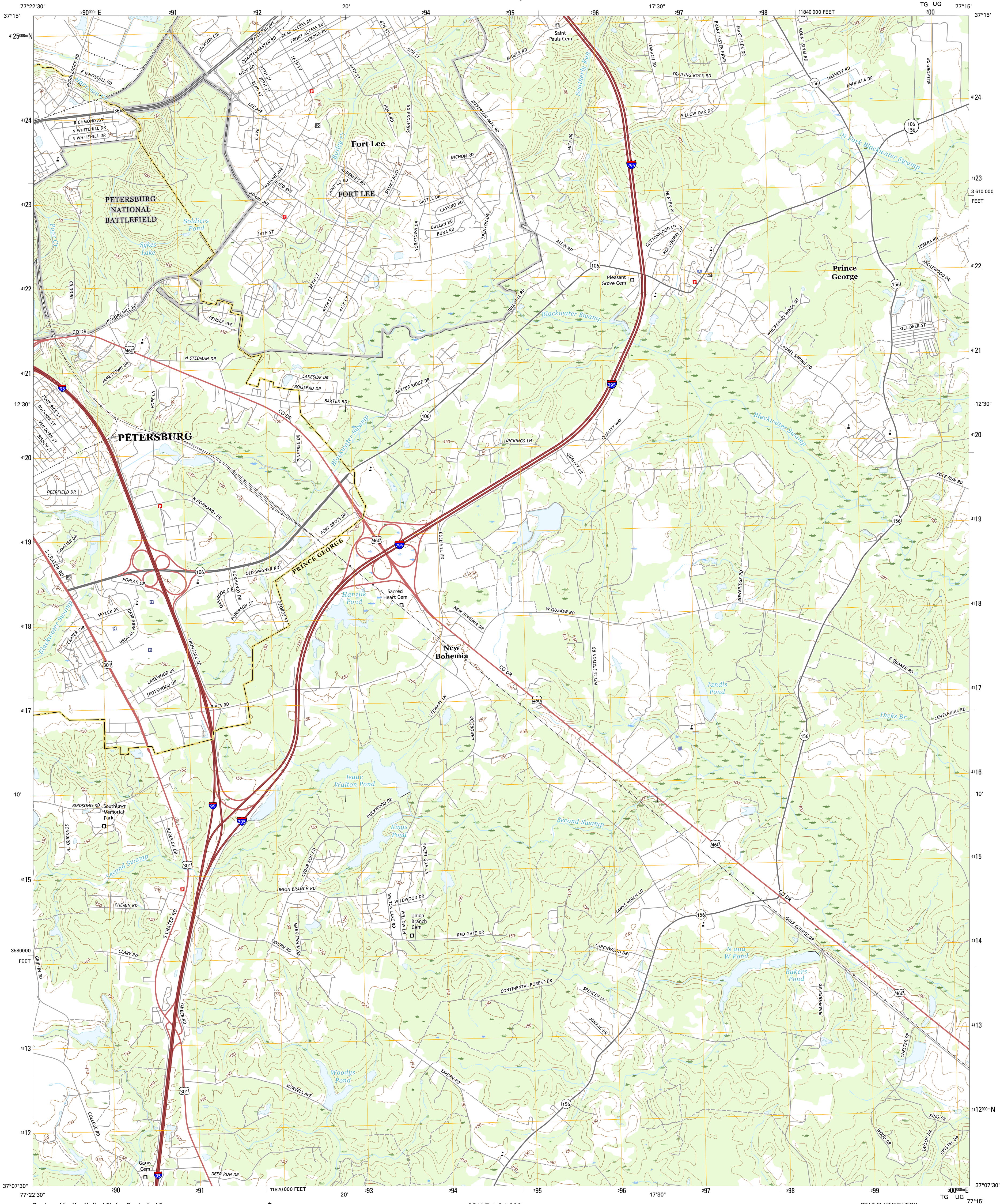


U.S. DEPARTMENT OF THE INTERIOR
U.S. GEOLOGICAL SURVEY



PRINCE GEORGE QUADRANGLE
VIRGINIA

7.5-MINUTE SERIES
TG UG



Produced by the United States Geological Survey
North American Datum of 1983 (NAD83)
World Geodetic System of 1984 (WGS84). Projection and
1 000-meter grid: Universal Transverse Mercator, Zone 18S
10 000-foot ticks: Virginia Coordinate System of 1983 (south
zone)

This map is not a legal document. Boundaries may be
generalized for this map scale. Private lands within government
reservations may not be shown. Obtain permission before
entering private lands.

Imagery.....NAIP, June 2014
Roads.....U.S. Census Bureau, 2015-2016
Names.....GNIS, 2016
Hydrography.....National Hydrography Dataset, 2014
Contours.....National Elevation Dataset, 2000
Boundaries.....Multiple sources; see metadata file 1972-2016
Wetlands.....FWS National Wetlands Inventory 1977-2014

UTM GRID AND 2011 MAGNETIC NORTH
DECLINATION AT CENTER OF SHEET

U.S. National Grid
100,000-m Square ID
100
TG UG
Grid Zone Designation
18S

SCALE 1:24 000
1 0.5 0 1 2
KILOMETERS
1000 500 0 1000 2000
METERS
1 0.5 0 1000 2000 3000 4000 5000 6000 7000 8000 9000 10000
MILES
FEET

CONTOUR INTERVAL 10 FEET
NORTH AMERICAN VERTICAL DATUM OF 1988

This map was produced to conform with the
National Geospatial Program US Topo Product Standard, 2011.
A metadata file associated with this product is draft version 0.6.19



QUADRANGLE LOCATION

| | | | |
|---|---|---|--------------------|
| 1 | 2 | 3 | 1 Chester |
| 2 | 3 | 4 | 2 Hopewell |
| 3 | 4 | 5 | 3 Westover |
| 4 | 5 | 6 | 4 Petersburg |
| 5 | 6 | 7 | 5 Disputanta North |
| 6 | 7 | 8 | 6 Carston |
| 7 | 8 | | 7 Templeton |
| 8 | | | 8 Disputanta South |

ROAD CLASSIFICATION
Expressway
Secondary Hwy
Ramp
Interstate Route
Local Connector
Local Road
4WD
US Route
State Route

PRINCE GEORGE, VA
2016

