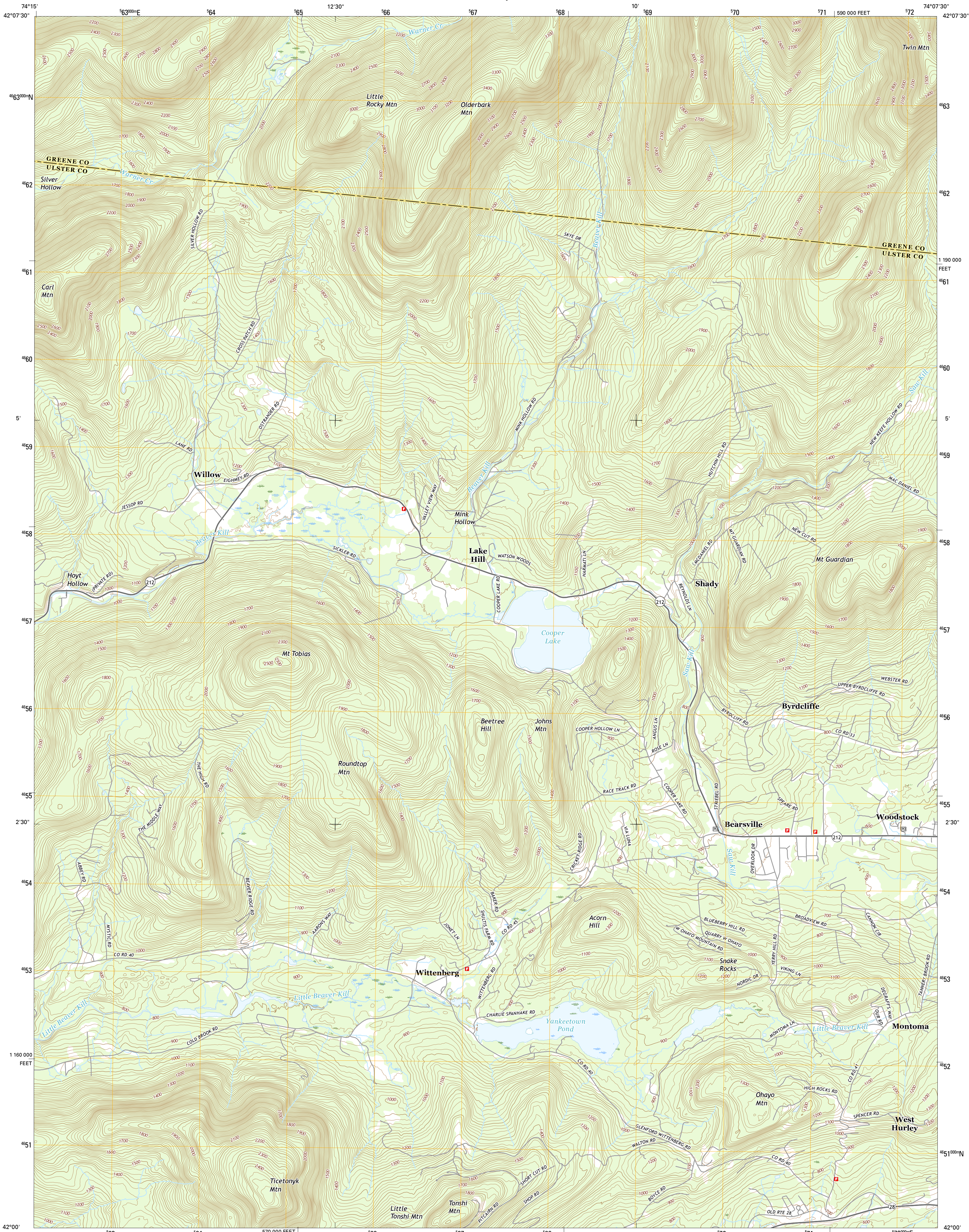




U.S. DEPARTMENT OF THE INTERIOR
U.S. GEOLOGICAL SURVEY



BEARSVILLE QUADRANGLE
NEW YORK
7.5-MINUTE SERIES

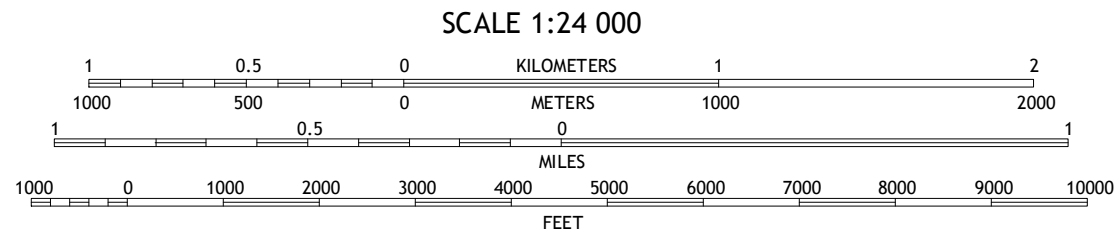
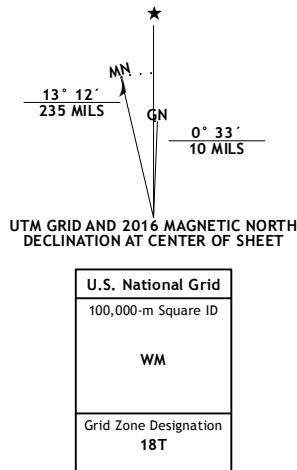


Produced by the United States Geological Survey
North American Datum of 1983 (NAD83)
World Geodetic System of 1984 (WGS84). Projection and
1 000-meter grid: Universal Transverse Mercator, Zone 18T
10 000-foot ticks: New York Coordinate System of 1983 (east zone)

This map is not a legal document. Boundaries may be
generalized for this map scale. Private lands within government
reservations may not be shown. Obtain permission before
entering private lands.

Imagery.....NAIP, August 2013
Roads.....U.S. Census Bureau, 2015 - 2016
Names.....GNIS, 2016
Hydrography.....National Hydrography Dataset, 2013
Contours.....National Elevation Dataset, 2016
Boundaries.....Multiple sources; see metadata file 1972 - 2016

Wetlands.....FWS National Wetlands Inventory 1977 - 2014



CONTOUR INTERVAL 20 FEET
NORTH AMERICAN VERTICAL DATUM OF 1988

This map was produced to conform with the
National Geospatial Program US Topo Product Standard, 2011.
A metadata file associated with this product is draft version 0.6.19



1	2	3	1 Lexington
4	5	6	2 Hunter
7	8	9	3 Kaaterskill Clove
			4 Phoenicia
			5 Woodstock
			6 West Shokan
			7 Ashokan
			8 Kingston West

ROAD CLASSIFICATION	
Expressway	Local Connector
Secondary Hwy	Local Road
Ramp	4WD
Interstate Route	US Route
	State Route

BEARSVILLE, NY
2016

