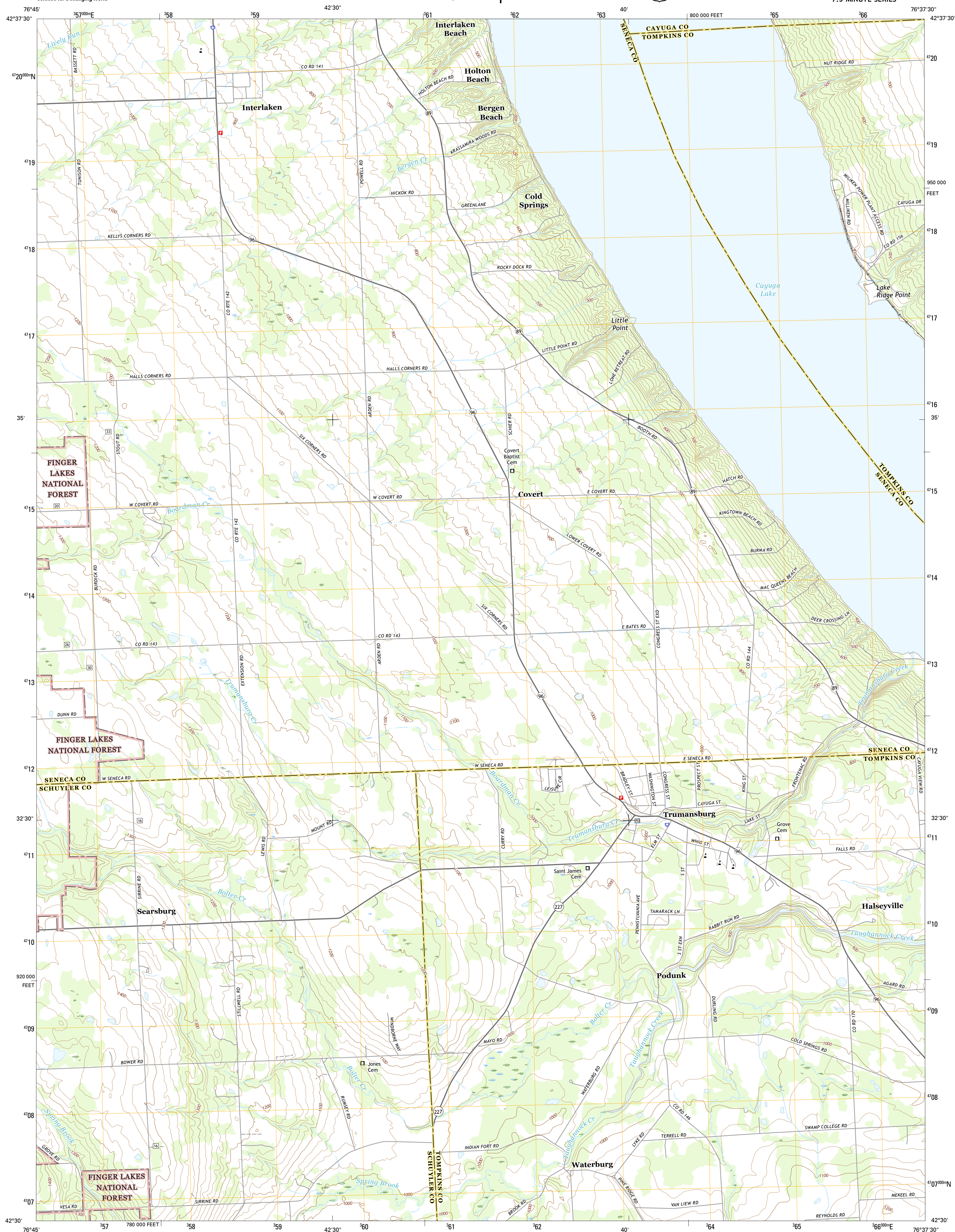
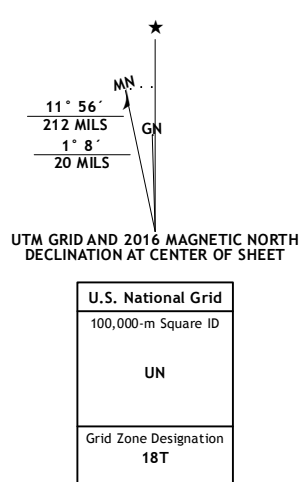




TRUMANSBURG QUADRANGLE
NEW YORK
7.5-MINUTE SERIES



Wetlands.....FWS National Wetlands Inventory 1977 - 2014











The image displays four horizontal number lines, each representing a different unit of measurement. The top line is for Kilometers, with major markings at 1, 0.5, 0, 1, and 2. The second line is for Meters, with major markings at 1000, 500, 0, 1000, and 2000. The third line is for Miles, with major markings at 1, 0.5, 0, and 1. The bottom line is for Feet, with major markings at 1000, 0, 1000, 2000, 3000, 4000, 5000, 6000, 7000, 8000, 9000, and 10000. Each line has smaller tick marks between the major ones, indicating intermediate values.

CONTOUR INTERVAL 20 FEET
NORTH AMERICAN VERTICAL DATUM OF 1988

This map was produced to conform with the
National Geospatial Program US Topo Product Standard, 2011.
A metadata file associated with this product is draft version 0.6.19



Expressway		Local Connector	
Secondary Hwy		Local Road	
Ramp		4WD	

	Interstate Route		US Route		State Route
	FS Primary Route		FS Passenger Route		FS High Clearance Route

1	2	3
4		5
6	7	8

ADJOINING QUADRANGLES

- 1 Ovid
- 2 Sheldrake
- 3 Genoa
- 4 Lodi
- 5 Ludlowville
- 6 Burdett
- 7 Mecklenburg
- 8 Ithaca West

TRUMANSBURG, NY
2016

