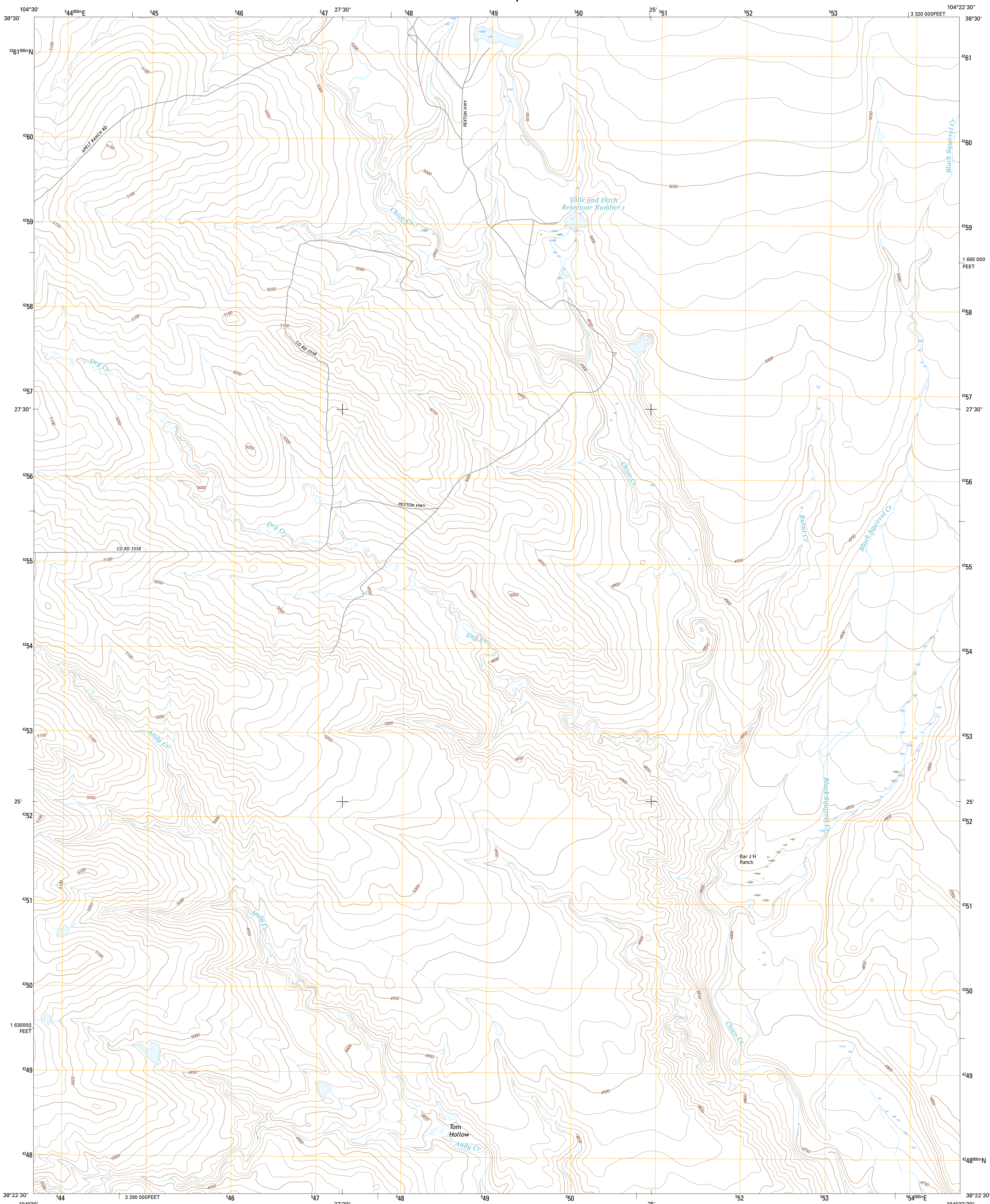




U.S. DEPARTMENT OF THE INTERIOR
U.S. GEOLOGICAL SURVEY



BAR J H RANCH QUADRANGLE
COLORADO-PUEBLO CO.
7.5-MINUTE SERIES

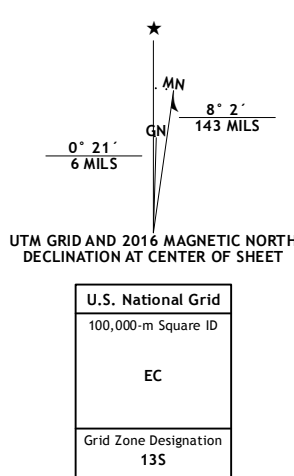


Produced by the United States Geological Survey

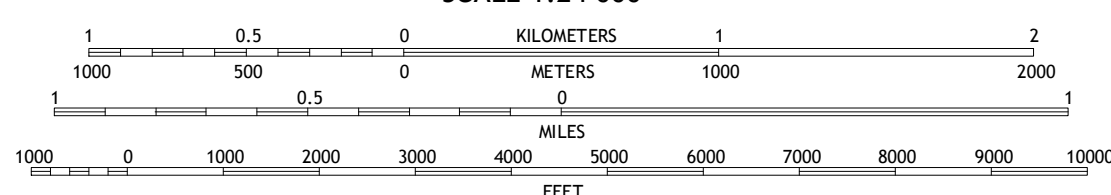
North American Datum of 1983 (NAD83)
World Geodetic System of 1984 (WGS84). Projection and
1 000-meter grid: Universal Transverse Mercator, Zone 13S
10 000-foot ticks: Colorado Coordinate System of 1983 (southern
zone)

This map is not a legal document. Boundaries may be generalized for this map scale. Private lands within government reservations may not be shown. Obtain permission before entering private lands.

Imagery.....	NAP, July	2013
Roads.....	U.S. Census Bureau, 2015	2016
Names.....	GNIS,	2016
Hydrography.....	National Hydrography Dataset,	2013
Contours.....	National Elevation Dataset,	2007
Boundaries.....	Multiple sources; see metadata file	1972 - 2016
Public Land Survey System.....	BLM,	2011
Wetlands.....	FWS National Wetlands Inventory	1977 - 2014



SCALE 1:24 000



CONTOUR INTERVAL 10 FEET
NORTH AMERICAN VERTICAL DATUM OF 1988

This map was produced to conform with the
National Geospatial Program US Topo Product Standard, 2011.
A metadata file associated with this product is draft version 0.6.19



QUADRANGLE LOCATION

ROAD CLASSIFICATION



1	2	3
4		5
6	7	8

AD JOINING QUADRANGLES

- 1 Fountain SE
- 2 Hanover
- 3 Hanover SE
- 4 Pinon
- 5 North Avondale NE
- 6 Northeast Pueblo
- 7 Devine
- 8 North Avondale

ADJOINING QUADRANGLES

BAR J H RANCH, CO
2016