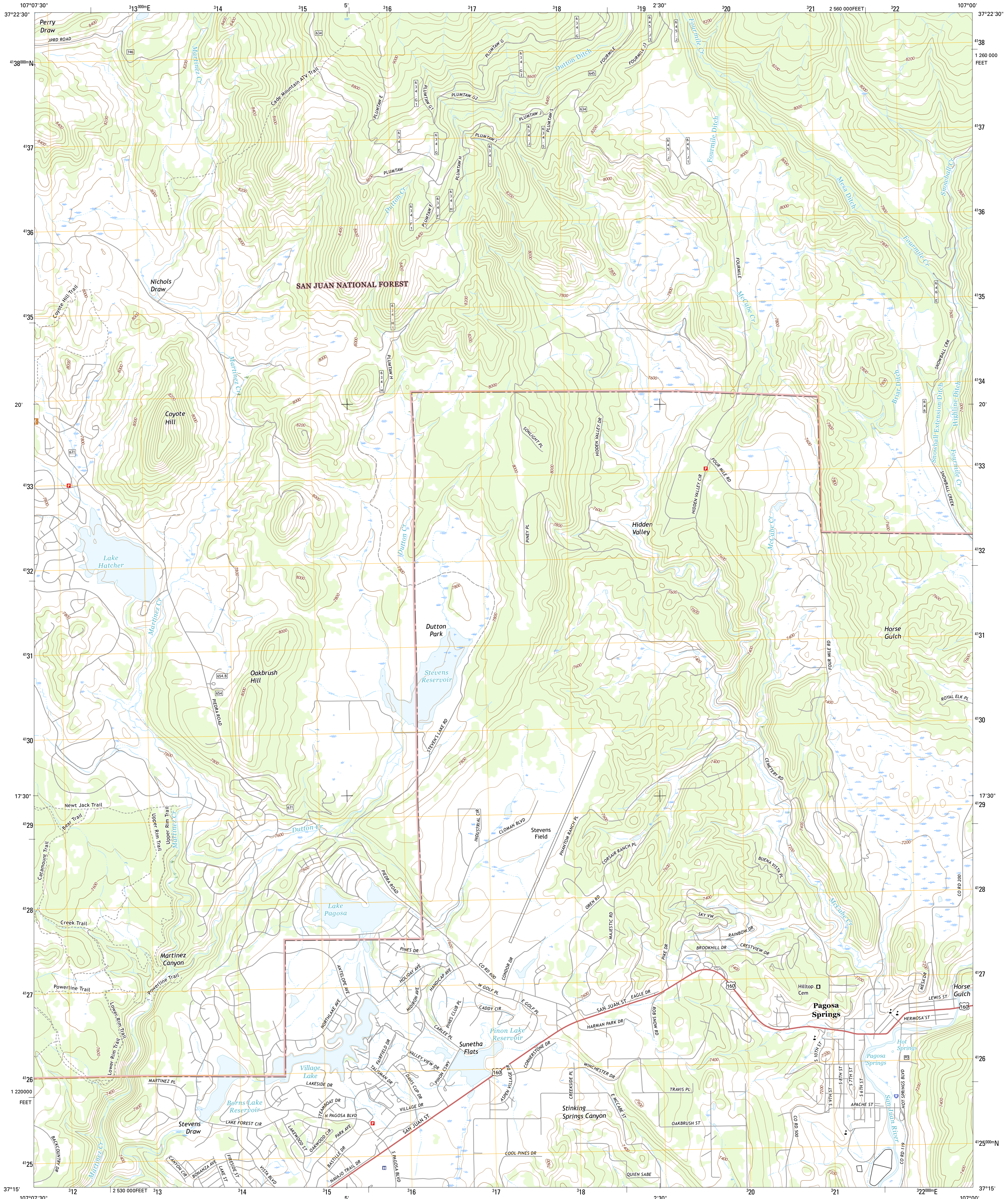




U.S. DEPARTMENT OF THE INTERIOR  
U.S. GEOLOGICAL SURVEY



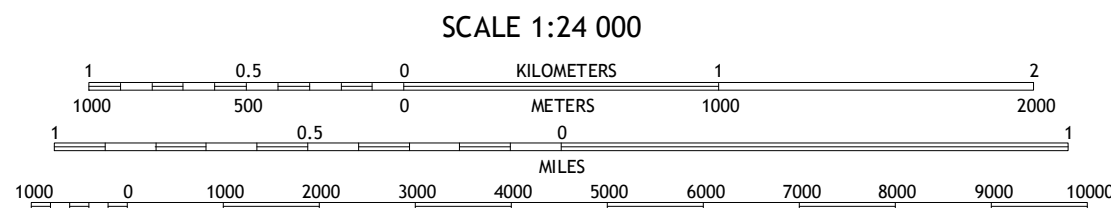
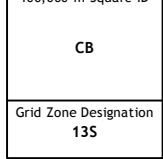
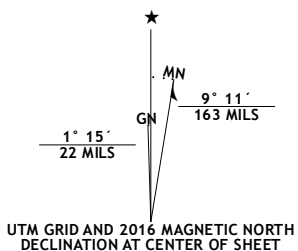
PAGOSA SPRINGS QUADRANGLE  
COLORADO-ARCHULETA CO.  
7.5-MINUTE SERIES



Produced by the United States Geological Survey  
North American Datum of 1983 (NAD83)  
World Geodetic System of 1984 (WGS84). Projection and  
10 000-foot ticks: Colorado Coordinate System of 1983 (south  
zone)

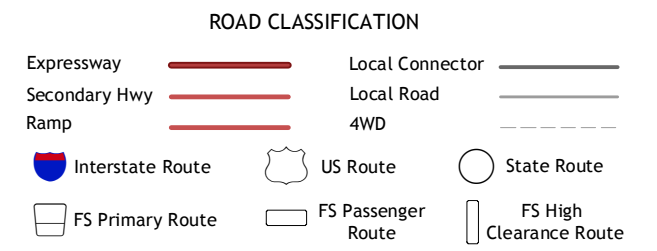
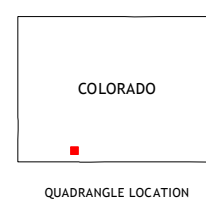
This map is not a legal document. Boundaries may be  
generalized for this map scale. Private lands within government  
reservations may not be shown. Obtain permission before  
entering private lands.

Imagery.....NAIP.....September 2013  
Roads.....U.S. Census Bureau, 2015 - 2016  
Roads within US Forest Service Lands.....FTSP Data  
with limited Forest Service updates, 2012 - 2016  
Names.....National Hydrography Dataset, 2013  
Hydrography.....National Elevation Dataset, 2005  
Contours.....Multiple sources; see metadata file 1972 - 2016  
Public Land Survey System.....BLM, 2011  
Wetlands.....FWS National Wetlands Inventory 1977 - 2014



CONTOUR INTERVAL 40 FEET  
NORTH AMERICAN VERTICAL DATUM OF 1988

This map was produced to conform with the  
National Geospatial Program US Topo Product Standard, 2011.  
A metadata file associated with this product is draft version 0.6.19



1	2	3
4	5	
6	7	8

ADJOINING QUADRANGLES

1 Oakbrush Ridge  
2 Pagosa Peak  
3 Saddle Mountain  
4 Chris Mountain  
5 Jackson Mountain  
6 Lonetree Canyon  
7 Oakbrush Hill  
8 Serviceberry Mountain

Check with local Forest Service unit  
for current travel conditions and restrictions.

PAGOSA SPRINGS, CO  
2016

