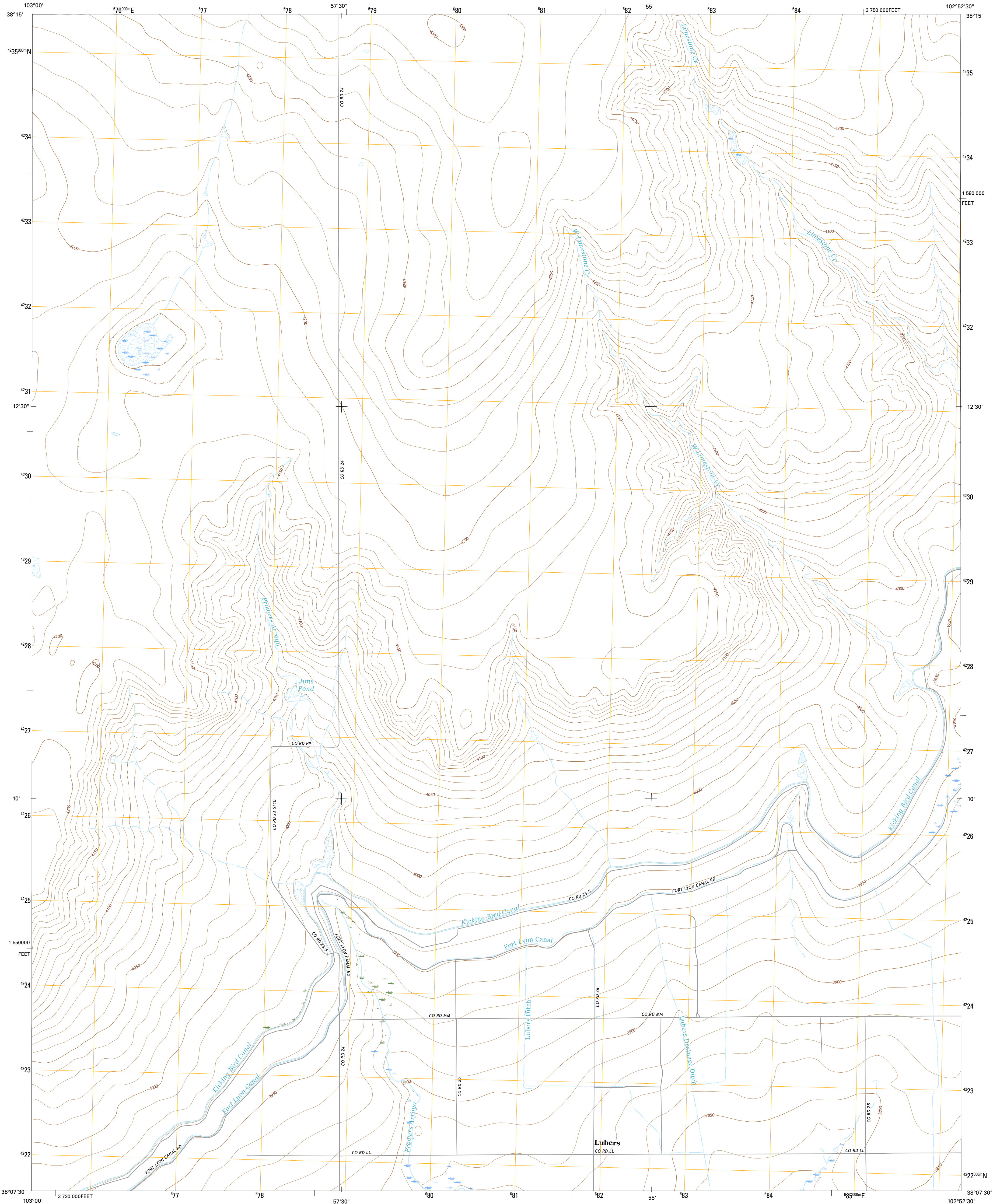




U.S. DEPARTMENT OF THE INTERIOR  
U.S. GEOLOGICAL SURVEY

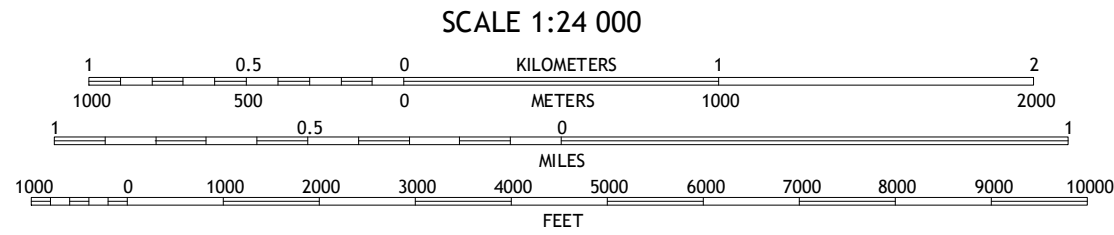
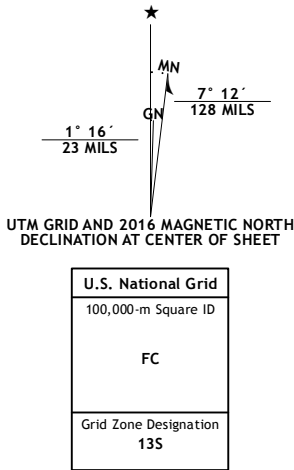


LUBERS QUADRANGLE  
COLORADO-BENT CO.  
7.5-MINUTE SERIES



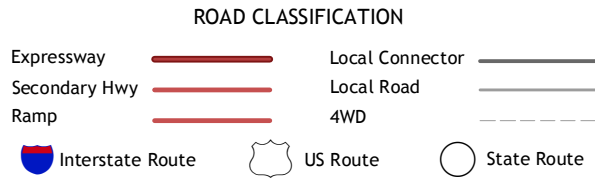
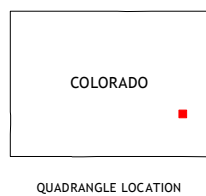
**Produced by the United States Geological Survey**  
North American Datum of 1983 (NAD83)  
Roads..... U.S. Census Bureau, 2015 - 2016  
Names..... GNIS, 2016  
Hydrography..... National Hydrography Dataset, 2013  
Contours..... National Elevation Dataset, 2007  
Boundaries..... Multiple sources; see metadata file 1972 - 2016  
Public Land Survey System..... BLM, 2011  
Wetlands..... FWS National Wetlands Inventory 1977 - 2014

This map is not a legal document. Boundaries may be generalized for this map scale. Private lands within government reservations may not be shown. Obtain permission before entering private lands.



CONTOUR INTERVAL 10 FEET  
NORTH AMERICAN VERTICAL DATUM OF 1988

This map was produced to conform with the National Geospatial Program US Topo Product Standard, 2011. A metadata file associated with this product is draft version 0.6.19



1	2	3
4	5	6
7	8	9

ADJOINING QUADRANGLES

1 Haswell SE  
2 Rose Ranch  
3 Swede Lake  
4 Tree Top Ranch  
5 McClave  
6 Kreybill  
7 Hasty  
8 Prowers

LUBERS, CO  
2016

