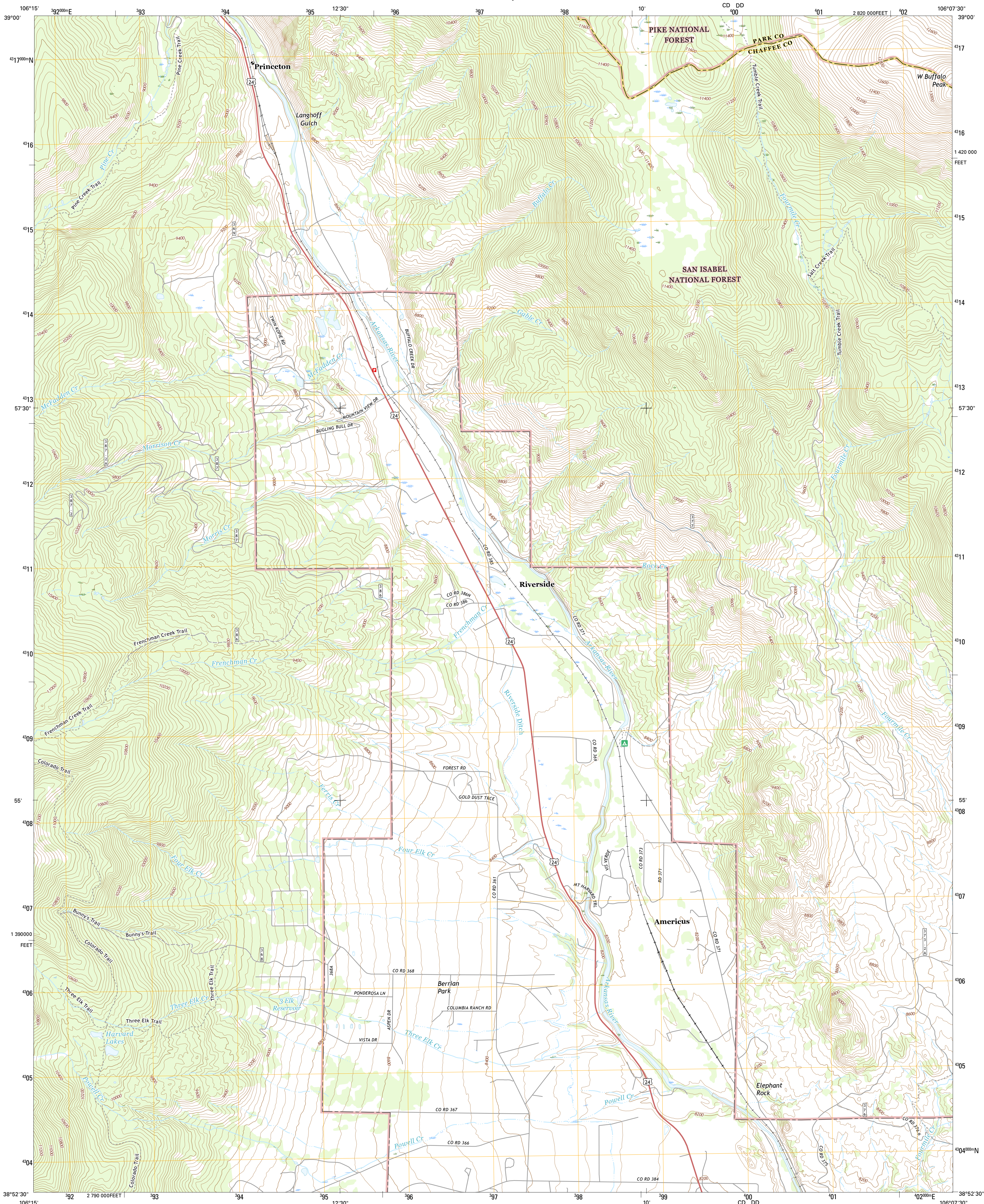




U.S. DEPARTMENT OF THE INTERIOR  
U.S. GEOLOGICAL SURVEY



HARVARD LAKES QUADRANGLE  
COLORADO  
7.5-MINUTE SERIES



Produced by the United States Geological Survey

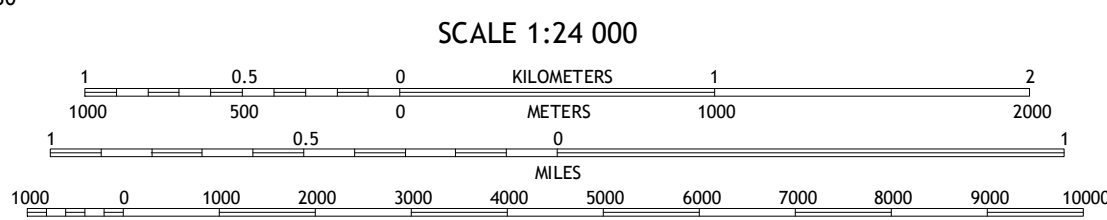
North American Datum of 1983 (NAD83)  
World Geodetic System of 1984 (WGS84) Projection and  
10 000-foot ticks: Colorado Coordinate System of 1983 (central  
zone)

This map is not a legal document. Boundaries may be  
generalized for this map scale. Private lands within government  
reservations may not be shown. Obtain permission before  
entering private lands.

Imagery.....NAP, September 2013  
Roads.....U.S. Census Bureau, 2015 - 2016  
Roads within US Forest Service Lands.....FSTopo Data  
with limited Forest Service updates, 2012 - 2016  
Names.....National Hydrography Dataset, 2013  
Hydrography.....National Elevation Dataset, 2012  
Contours.....Multiple sources; see metadata file 1972 - 2016  
Public Land Survey System.....BLM, 2011  
Wetlands.....FWS National Wetlands Inventory 1977 - 2014

UTM GRID AND 2016 MAGNETIC NORTH  
DECLINATION AT CENTER OF SHEET

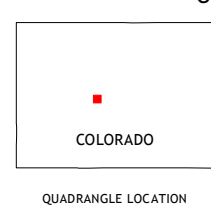
U.S. National Grid  
100,000 m Square ID  
CD DD  
Grid Zone Designation  
135



SCALE 1:24 000

CONTOUR INTERVAL 40 FEET  
NORTH AMERICAN VERTICAL DATUM OF 1988

This map was produced to conform with the  
National Geospatial Program US Topo Product Standard, 2011.  
A metadata file associated with this product is draft version 0.6.19



ROAD CLASSIFICATION

|                  |                         |
|------------------|-------------------------|
| Expressway       | Local Connector         |
| Secondary Hwy    | Local Road              |
| Ramp             | 4WD                     |
| Interstate Route | US Route                |
| FS Primary Route | FS Passenger Route      |
|                  | FS High Clearance Route |

Check with local Forest Service unit  
for current travel conditions and restrictions.

1 Granite  
2 South Peak  
3 Jones Hill  
4 Mount Harvard  
5 Marmot Peak  
6 Mount Yale  
7 Buena Vista West  
8 Buena Vista East

HARVARD LAKES, CO  
2016

