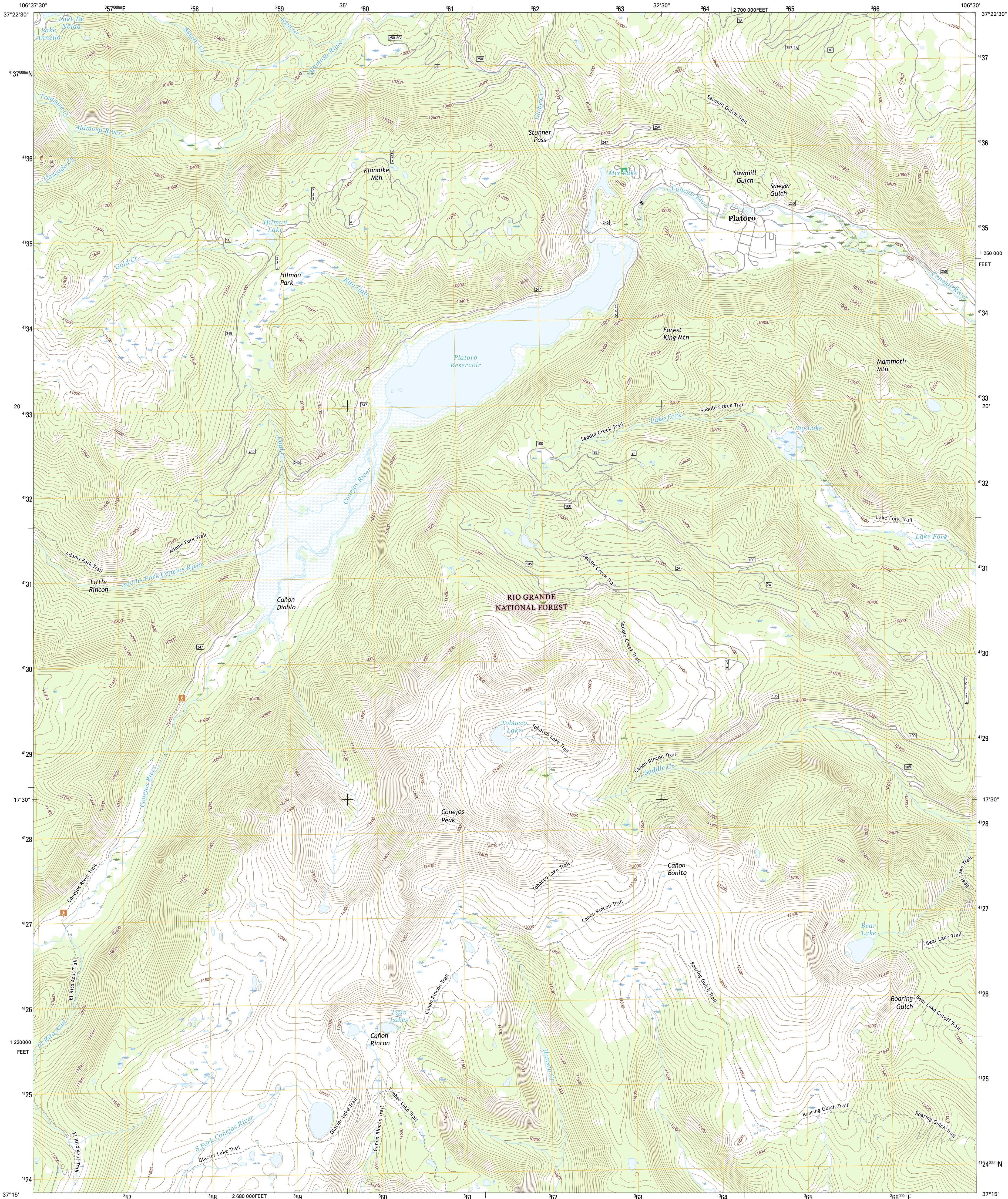




U.S. DEPARTMENT OF THE INTERIOR  
U.S. GEOLOGICAL SURVEY



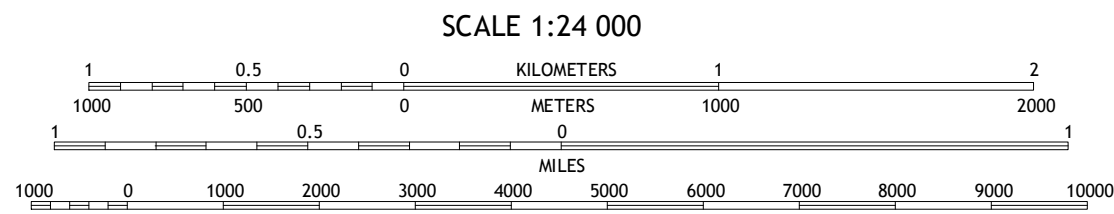
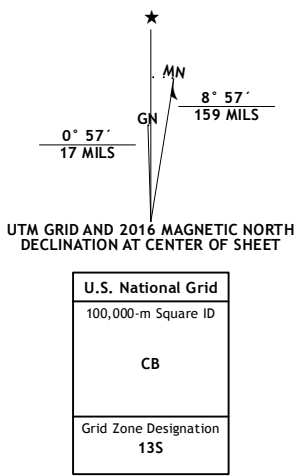
PLATORO QUADRANGLE  
COLORADO-CONEJOS CO.  
7.5-MINUTE SERIES



Produced by the United States Geological Survey  
North American Datum of 1983 (NAD83)  
World Geodetic System of 1984 (WGS84). Projection and  
1000-meter grid: Universal Transverse Mercator, Zone 13S  
10 000-foot ticks: Colorado Coordinate System of 1983 (south  
zone)

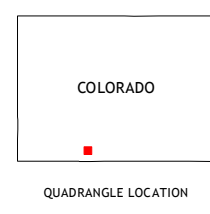
This map is not a legal document. Boundaries may be  
generalized for this map scale. Private lands within government  
reservations may not be shown. Obtain permission before  
entering private lands.

Imagery.....NAIP.....September 2013  
Roads.....U.S. Census Bureau, 2015 - 2016  
Roads within US Forest Service Lands.....FSTopo Data  
with limited Forest Service updates, 2012 - 2016  
Contours.....GNIS, 2016  
Hydrography.....National Hydrography Dataset, 2013  
Boundaries.....National Elevation Dataset, 2005  
Boundaries.....Multiple sources; see metadata file 1972 - 2016  
Public Land Survey System.....BLM, 2011  
Wetlands.....FWS National Wetlands Inventory 1977 - 2014



CONTOUR INTERVAL 40 FEET  
NORTH AMERICAN VERTICAL DATUM OF 1988

This map was produced to conform with the  
National Geospatial Program US Topo Product Standard, 2011.  
A metadata file associated with this product is draft version 0.6.19



ROAD CLASSIFICATION

Expressway  
Secondary Hwy  
Ramp  
Interstate Route  
FS Primary Route  
FS Passenger Route

Local Connector  
Local Road  
4WD  
US Route  
FS High Clearance Route  
State Route

Check with local Forest Service unit  
for current travel conditions and restrictions.

1	2	3
4	5	6
7	8	9

ADJOINING QUADRANGLES

1 Elwood Pass  
2 Summitville  
3 Jasper  
4 Summit Peak  
5 Red Mountain  
6 Elephant Head Rock  
7 Victoria Lake  
8 Spectacle Lake

PLATORO, CO  
2016

