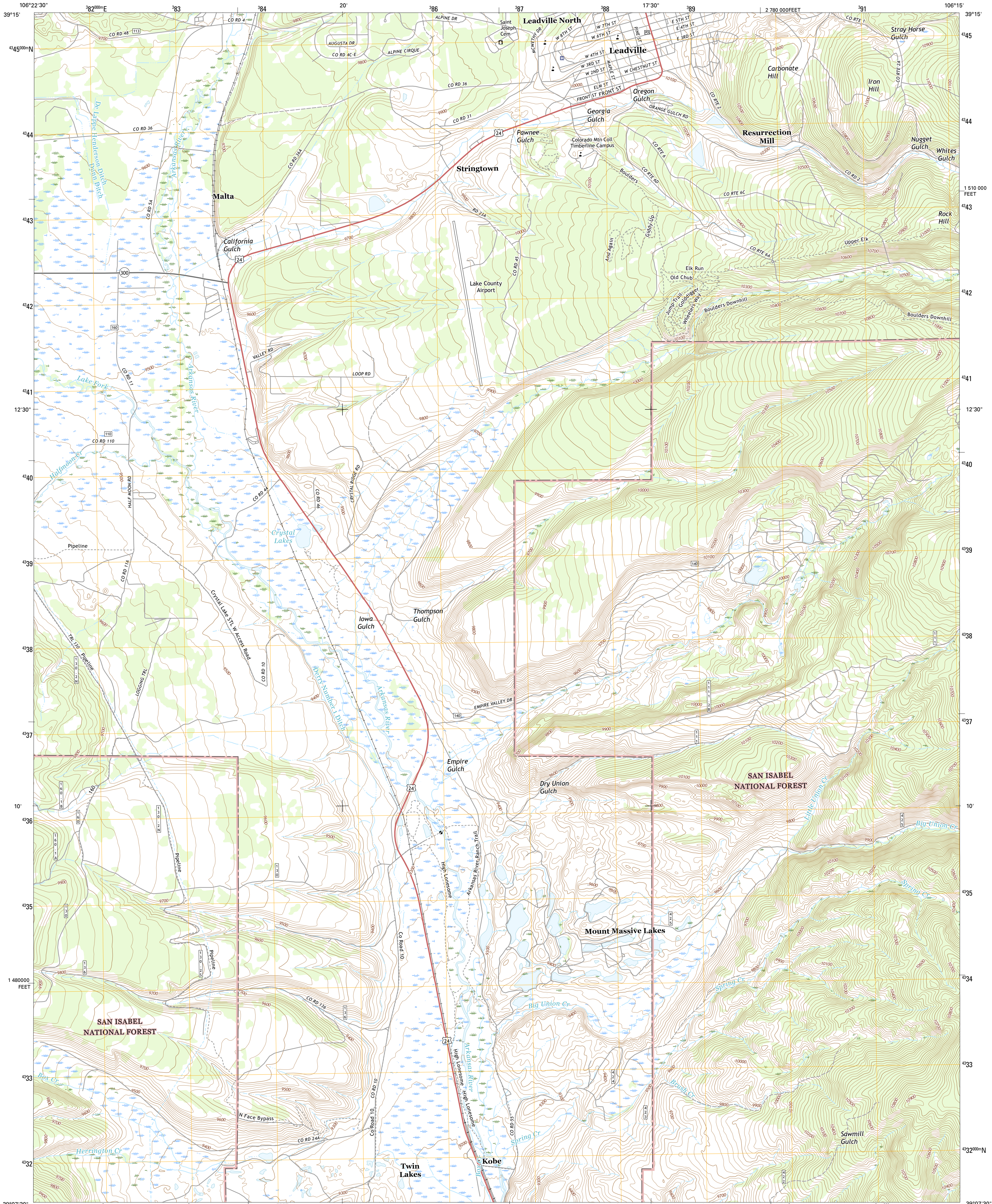




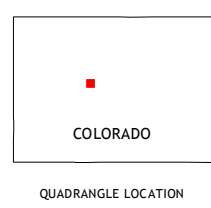
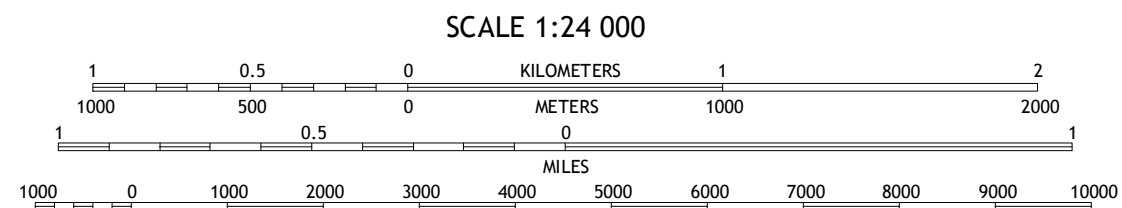
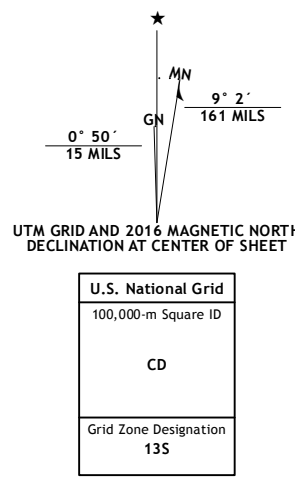
U.S. DEPARTMENT OF THE INTERIOR
U.S. GEOLOGICAL SURVEY



LEADVILLE SOUTH QUADRANGLE
COLORADO-LAKE CO.
7.5-MINUTE SERIES



Produced by the United States Geological Survey
North American Datum of 1983 (NAD83)
North Geodetic System of 1984 (NAD84) Projection and
1 000-meter grid: Universal Transverse Mercator, Zone 13S
10 000-foot ticks: Colorado Coordinate System of 1983 (central
zone)
This map is not a legal document. Boundaries may be
generalized for this map scale. Private lands within government
reservations may not be shown. Obtain permission before
entering private lands.
Imagery.....NAIP, September 2013
Roads.....U.S. Census Bureau, 2015 2016
Roads within US Forest Service Lands.....FS Topo Data
with limited Forest Service updates, 2012 2016
Names.....GNIS, 2016
Hydrography.....National Hydrography Dataset, 2013
Contours.....National Elevation Dataset, 2012
Boundaries.....Multiple sources; see metadata file 1972-2016
Public Land Survey System.....BLM, 2011
Wetlands.....FWS National Wetlands Inventory 1977-2014



ROAD CLASSIFICATION
Expressway
Secondary Hwy
Ramp
Interstate Route
FS Primary Route
Local Connector
Local Road
4WD
US Route
FS Passenger Route
State Route
FS High Clearance Route
Check with local Forest Service unit
for current travel conditions and restrictions.

1	2	3
4	5	6
7	8	9

1 Homestake Reservoir
2 Leadville North
3 Climax
4 Mount Massive
5 Mount Sherman
6 Mount Elbert
7 Granite
8 South Peak

ADJOINING QUADRANGLES

LEADVILLE SOUTH, CO
2016

