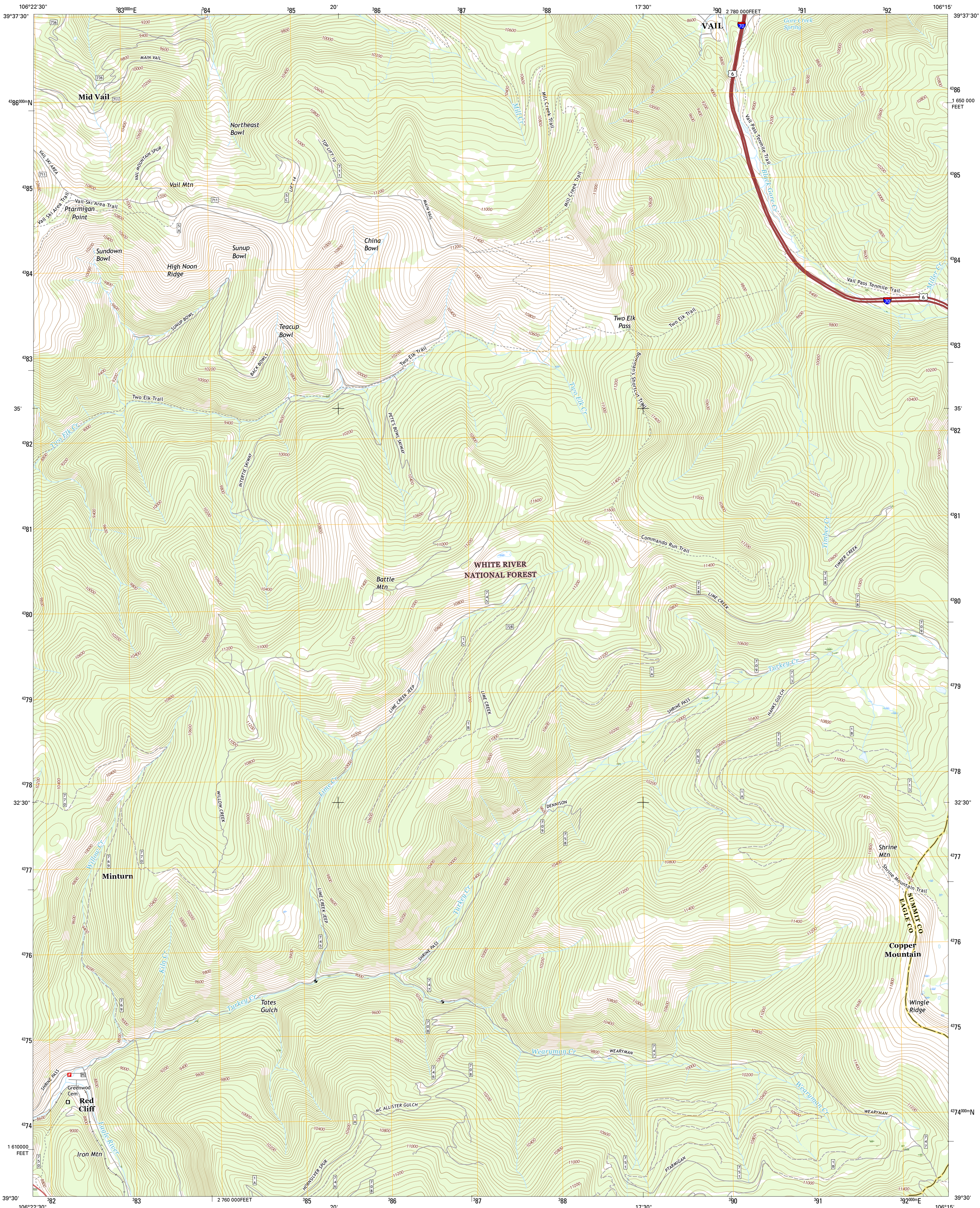




U.S. DEPARTMENT OF THE INTERIOR
U.S. GEOLOGICAL SURVEY



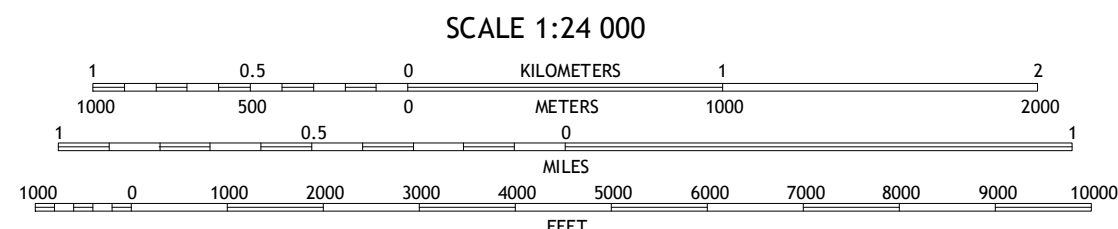
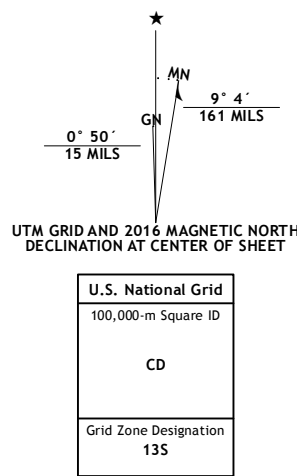
RED CLIFF QUADRANGLE
COLORADO
7.5-MINUTE SERIES



Produced by the United States Geological Survey
North American Datum of 1983 (NAD83)
World Geodetic System of 1984 (WGS84)
1 000-meter grid; Universal Transverse Mercator, Zone 13S
10 000-foot ticks; Colorado Coordinate System of 1983 (central zone)

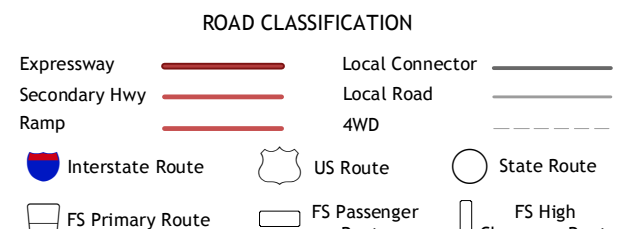
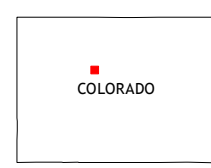
This map is not a legal document. Boundaries may be generalized for this map scale. Private lands within government reservations may not be shown. Obtain permission before entering private lands.

Imagery:.....NAIP, September 2013
Roads:.....U.S. Census Bureau, 2015 - 2016
Roads within US Forest Service Lands:.....FSTopo Data with limited Forest Service updates, 2012 - 2016
Names:.....National Hydrography Dataset, 2013
Hydrography:.....GNIS, 2016
Contours:.....National Elevation Dataset, 2013
Boundaries:.....Multiple sources; see metadata file 1972 - 2016
Public Land Survey System:.....BLM, 2011
Wetlands:.....FWS National Wetlands Inventory 1977 - 2014



CONTOUR INTERVAL 40 FEET
NORTH AMERICAN VERTICAL DATUM OF 1988

This map was produced to conform with the National Geospatial Program US Topo Product Standard, 2011. A metadata file associated with this product is draft version 0.6.19



1	2	3
4	5	6
7	8	9

1 Vail West
2 Vail East
3 Willow Lakes
4 Minturn
5 Vail Pass
6 Mount of the Holy Cross
7 Pando
8 Copper Mountain

ADJOINING QUADRANGLES

Check with local Forest Service unit for current travel conditions and restrictions.

RED CLIFF, CO
2016

